

0CNP3-M91000EN

Contents

Fig. No. Fig. Name

ENGINE UNIT(GA280SNS)

1. CYLINDER BLOCK
2. CYLINDER HEAD & BONNET
3. TOOL & LABEL
4. LABEL(SAFETY)
5. AIR CLEANER & MUFFLER
6. CRANKSHAFT,PISTON & CAMSHAFT
7. FUEL OIL TANK & FUEL OIL LINE
8. CARBURETOR
9. GOVERNOR & CONTROL DEVICE
10. FLY.MAGNET & STARTING DEVICE

ENGINE UNIT(GA280ESC)

11. CYLINDER BLOCK
12. CYLINDER HEAD & BONNET
13. TOOL & LABEL
14. AIR CLEANER & MUFFLER
15. CRANKSHAFT,PISTON & CAMSHAFT
16. FUEL OIL TANK & FUEL OIL LINE
17. CARBURETOR
18. GOVERNOR & CONTROL DEVICE
19. FLY.MAGNET & STARTING DEVICE

PULLEY & TENSION

20. TENSION ARM

Fig. No. Fig. Name

21. PULLEY

FRAME SECTION

22. BODY FRAME

TRAVELING SECTION 1

23. IDLER
24. TRACK ROLLER

CONTROL SECTION

25. HANDLE
26. TRAVEL CLUTCH LEVER
27. BRAKE LEVER
28. HST LEVER
29. SIDE CLUTCH LEVER
30. HST TANK

PLATFORM CARRIER

31. HYDRAULIC PUMP
32. HYDRAULIC CYLINDER
33. PANTAGRAPH
34. PLATFORM CARRIER
35. DUMP CHANGE LEVER

Contents

Fig. No. Fig. Name

LABEL SECTION

36. LABELS

TRAVELING SECTION 2

37. TRANSMISSION CASE

38. MAIN SHAFT

39. BEVEL SHAFT

40. TRANSMISSION SHAFT B

41. SIDE CLUTCH SHAFT

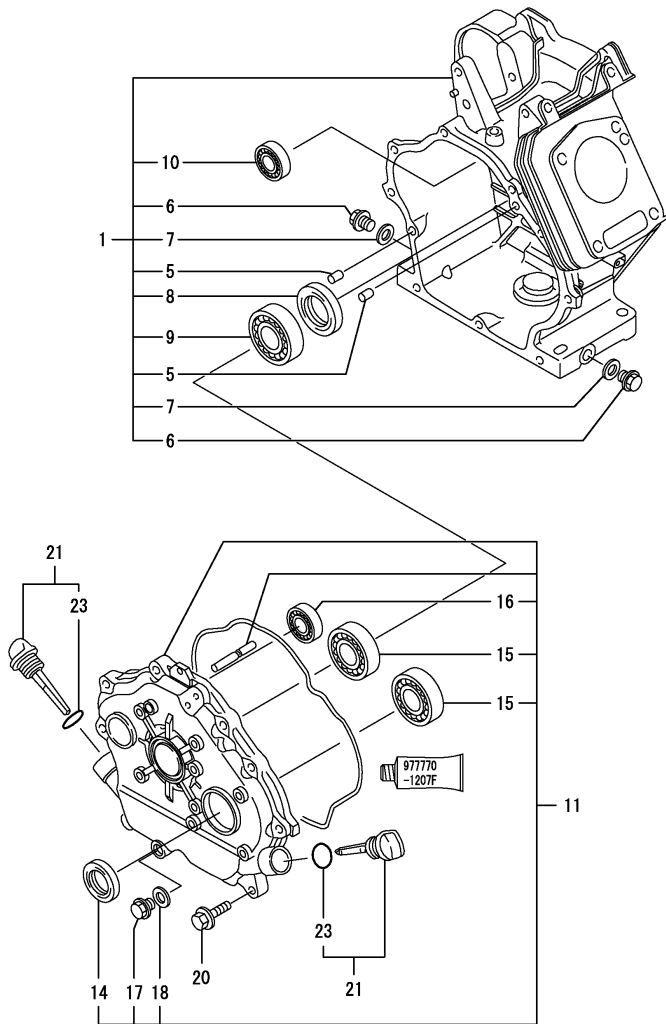
42. AXLE

43. BRAKE

44. SIDE CLUTCH

Fig. No. Fig. Name

Fig.1. CYLINDER BLOCK



(A)=GA280SNS

(B)=

(C)=

(D)=

(E)=

(F)=

No.	Lev.	Parts No.	Description	Q'ty						I	R
				(A)	(B)	(C)	(D)	(E)	(F)		
1	1	760890-01561	BLOCK ASSY, CYLINDER	1							
5	2	114270-01600	PIN, M8X12	2							
6	2	160610-01690	PLUG, M12	2							
7	2	104200-59170	GASKET, 12	2							
8	2	160110-02220	SEAL, OIL	1							
9	2	129900-26250	BEARING, BALL 6206C3	1							
10	2	160903-28020	BEARING, 6202C3E	1							
11	1	760792-01502	COVER ASSY	1							
14	2	160110-02220	SEAL, OIL	1							
15	2	129900-26250	BEARING, BALL 6206C3	2							
16	2	160903-28020	BEARING, 6202C3E	1							
17	2	160610-01690	PLUG, M12	1							
18	2	104200-59170	GASKET, 12	1							
20	1	26106-080302	BOLT, M8X 30 PLATED	9							
21	1	160810-01740	CAP ASSY	2							
23	2	24311-000180	O-RING, 1AP18.0	2							

Remarks
 (REMARKS)"EFFECTIVE MACHINE NO." OF
 ENGINE IS INDICATED ON THE
 ENGINE LABEL WHICH IS SHOWN
 IN FIG.10.

Fig.2. CYLINDER HEAD & BONNET

(A)=GA280SNS

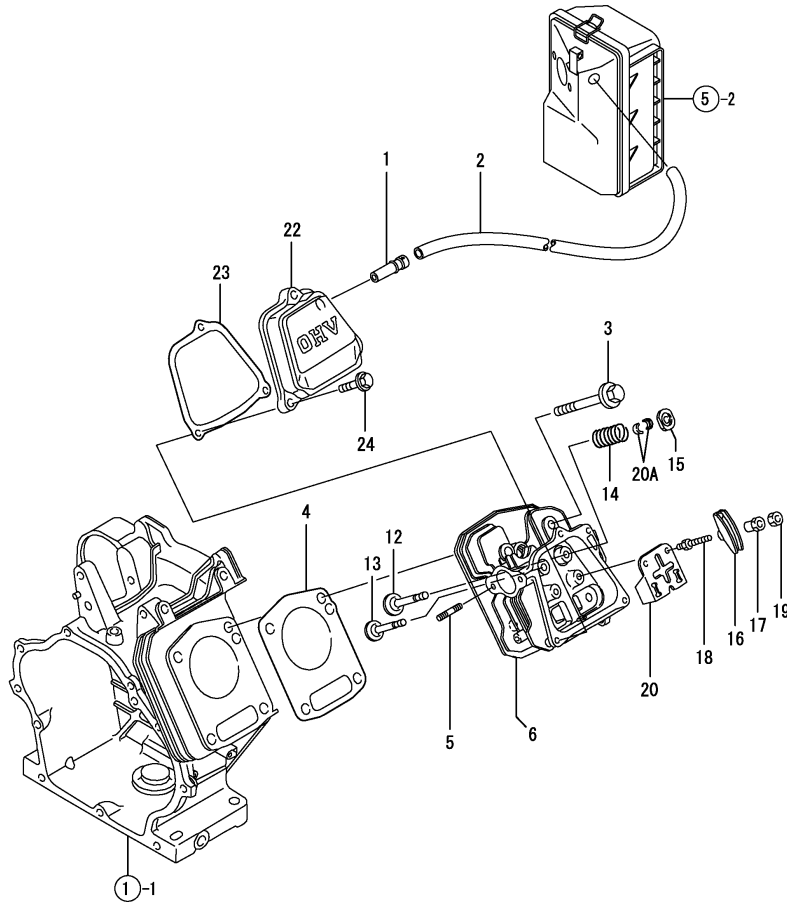
(B)=

(C)=

(D)=

(E)=

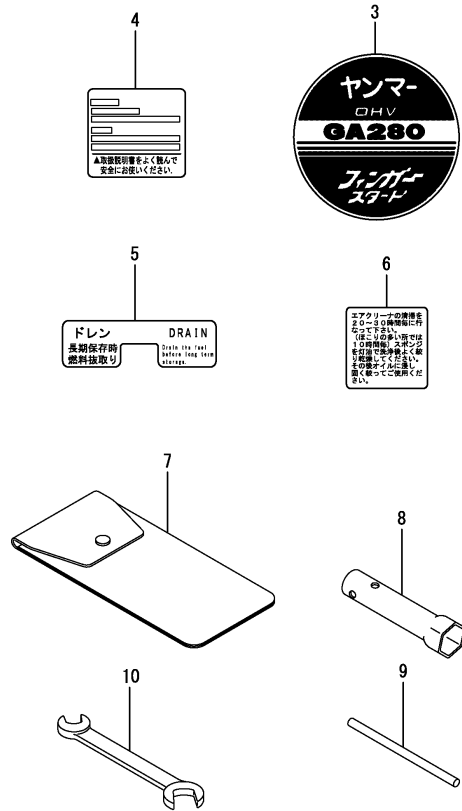
(F)=



No.	Lev.	Parts No.	Description	Q'ty						I	R
				(A)	(B)	(C)	(D)	(E)	(F)		
1	1	160610-03050	BREATHER ASSY	1							
2	1	160820-03180	PIPE , BREATHER	1							
3	1	160890-01210	BOLT, FLANGE M10X70	4							
4	1	160890-01330	GASKET, HEAD	1							
4-1	1	160890-01331	GASKET, HEAD	1							N
(A=E75749)											
5	1	160890-04330	STUD, 2D8X18	2							
6	1	160890-11011	HEAD ASSY, CYLINDER	1							
6-1	1	160890-11012	HEAD ASSY, CYLINDER	1							N
(A=E79422)											
12	1	160890-11101	VALVE, INTAKE	1							
13	1	160890-11111	VALVE, EXHAUST	1							
14	1	160890-11120	SPRING, VALVE	2							
15	1	160890-11190	RETAINER, SPRING	2							
16	1	160890-11202	ARM, ROCKER	2							
17	1	160690-11221	PIVOT, ROCKER ARM	2							
17-1	1	160690-11222	PIVOT, ROCKER ARM	2							R
(A=E75905)											
18	1	160890-11270	BOLT	2							
19	1	160690-11280	NUT, M6X0.5	2							
20	1	160890-11290	PLATE, GUIDE	1							
20A	1	720380-11570	COTTER	2							W
(A=E75905)											
22	1	160890-11300	BONNET ASSY, HEAD	1							
23	1	160890-11311	GASKET, BONNET	1							
24	1	26106-060352	BOLT, M6X 35 PLATED	3							

Remarks
 (REMARKS)"EFFECTIVE MACHINE NO." OF
 ENGINE IS INDICATED ON THE
 ENGINE LABEL WHICH IS SHOWN
 IN FIG.10.

Fig.3. TOOL & LABEL



(A)=GA280SNS

(B)=

(C)=

(D)=

(E)=

(F)=

No.	Lev.	Parts No.	Description	Qty						I	R
				(A)	(B)	(C)	(D)	(E)	(F)		
3	1	160890-07150	LABEL, FINGER START	1							
4	1	160692-07251	LABEL, CAUTION	1							
5	1	160690-07260	LABEL, DRAIN	1							
6	1	160520-07370	LABEL, CLEANER	1							
7	1	160110-92610	BAG, TOOL	1							
8	1	160120-92700	WRENCH, 21 L86	1							
9	1	160110-92710	HANDLE, WRENCH	1							
10	1	28110-100120	SPANNER, 10X12	1							

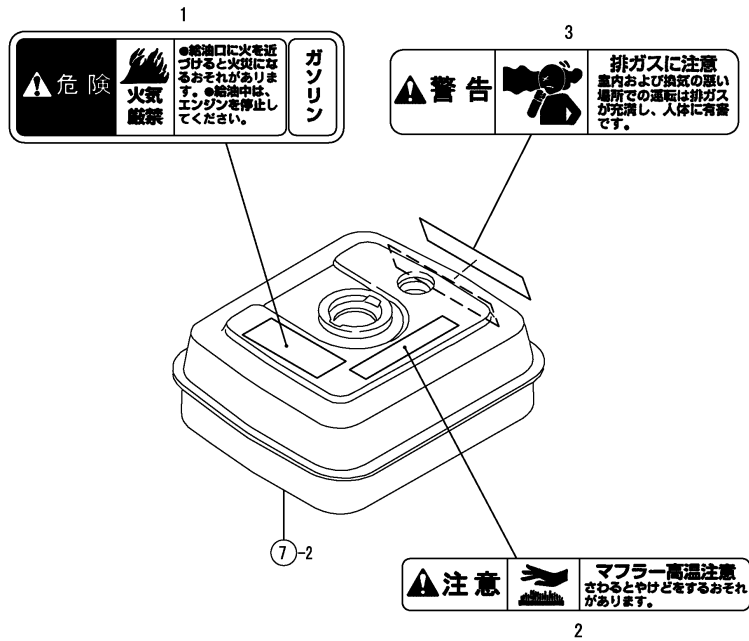
Remarks
 (REMARKS)"EFFECTIVE MACHINE NO." OF
 ENGINE IS INDICATED ON THE
 ENGINE LABEL WHICH IS SHOWN
 IN FIG.10.

Fig.4. LABEL(SAFETY)

(A)=GA280SNS
(B)=
(C)=

(D)=
(E)=
(F)=

No.	Lev.	Parts No.	Description	Qty						I	R
				(A)	(B)	(C)	(D)	(E)	(F)		
1	1	1A2100-86500	LABEL, DANGER	1							
2	1	1E5120-86720	LABEL, CAUTION	1							
3	1	1E5120-86600	WARNING, EXHAUST GAS	1							



Remarks
(REMARKS)"EFFECTIVE MACHINE NO." OF
ENGINE IS INDICATED ON THE
ENGINE LABEL WHICH IS SHOWN
IN FIG.10.

Fig.5. AIR CLEANER & MUFFLER

(A)=GA280SNS

(B)=

(C)=

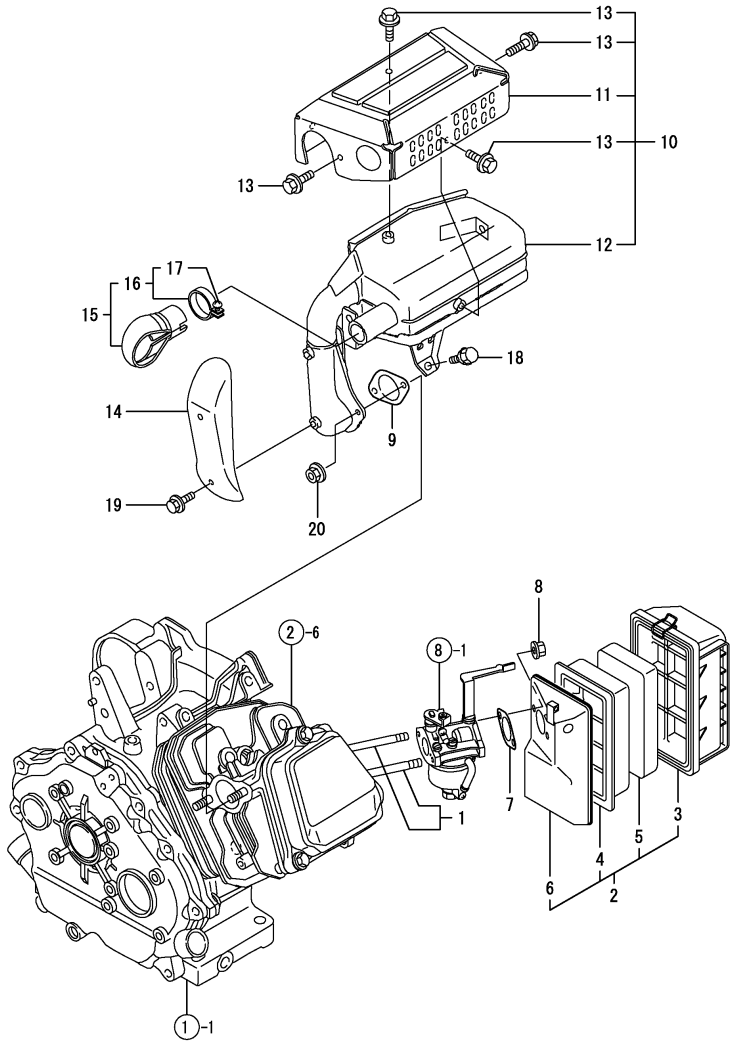
(D)=

(E)=

(F)=

Q'ty

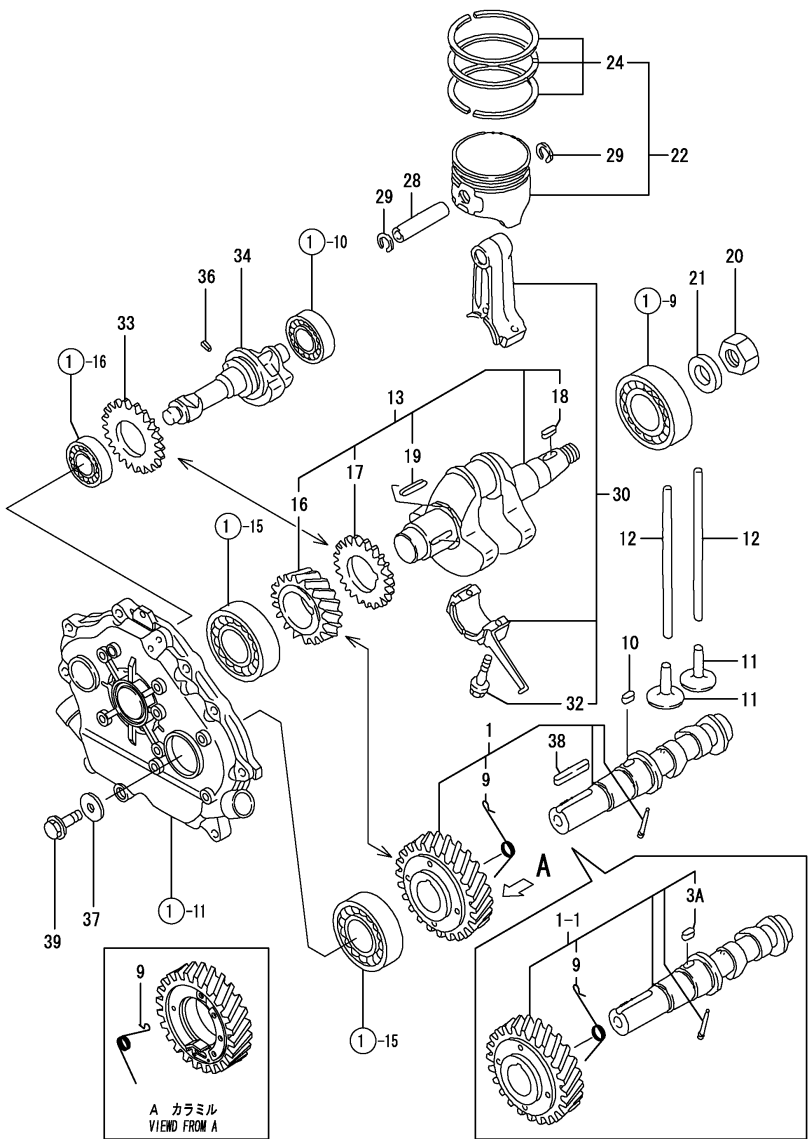
No.	Lev.	Parts No.	Description	Q'ty						I	R
				(A)	(B)	(C)	(D)	(E)	(F)		
1	1	160890-04320	STUD, M8X 85	2							
1-1	1	160998-04340	STUD, 2D 8X 85	2							N
(A=E77826)											
2	1	160890-12500	CLEANER ASSY, AIR	1							
2-1	1	160890-12501	CLEANER ASSY, AIR	1							N
(A=E77826)											
3	2	160790-12510	COVER, AIR CLEANER	1							
4	2	160790-12530	HOLDER, ELEMENT	1							
4-1	2	160790-12531	HOLDER, ELEMENT	1							F 1
(A=E77826)											
5	2	160790-12540	ELEMENT	1							
6	2	160890-12520	CASE, AIR CLEANER	1							
6-1	2	160890-12521	CASE, AIR CLEANER	1							F 1
(A=E77826)											
7	1	160910-56151	GASKET, CARBURETOR	1							
8	1	26366-080002	NUT, M8	2							
8-1	1	160998-04330	NUT, M8	2							N
(A=E77826)											
9	1	160890-13210	GASKET, MUFFLER	1							
9-1	1	160890-13211	GASKET, MUFFLER	1							N
(A=E75749)											
10	1	160890-13602	MUFFLER ASSY	1							
10-1	1	160890-13720	MUFFLER ASSY	1							N
(A=E78683)											
10-2	1	160890-13721	MUFFLER ASSY	1							N
(A=*2009.04)											
11	2	160890-13530	COVER	1							
12	2	160890-13580	MUFFLER	1							
12-1	2	160998-13411	MUFFLER	1							N
(A=E78683)											
12-2	2	160998-13412	MUFFLER	1							N
(A=*2009.04)											
13	2	114252-13950	BOLT, M6X8	4							
14	1	160890-13660	COVER	1							
15	1	114252-13800	EXTENSION ASSY	1							
16	2	114252-13910	CLAMP	1							
17	3	114252-13960	SCREW 6X 25	1							
18	1	160890-13910	BOLT, FLANGE M6X20	1							
19	1	114252-13950	BOLT, M6X8	2							
20	1	26366-080002	NUT, M8	2							



Remarks

(1) REF.NO.4-1 & 6-1 INTERCHANGEABLE BY SET.
 (REMARKS)"EFFECTIVE MACHINE NO." OF ENGINE IS INDICATED ON THE ENGINE LABEL WHICH IS SHOWN IN FIG.10.

Fig.6. CRANKSHAFT,PISTON & CAMSHAFT



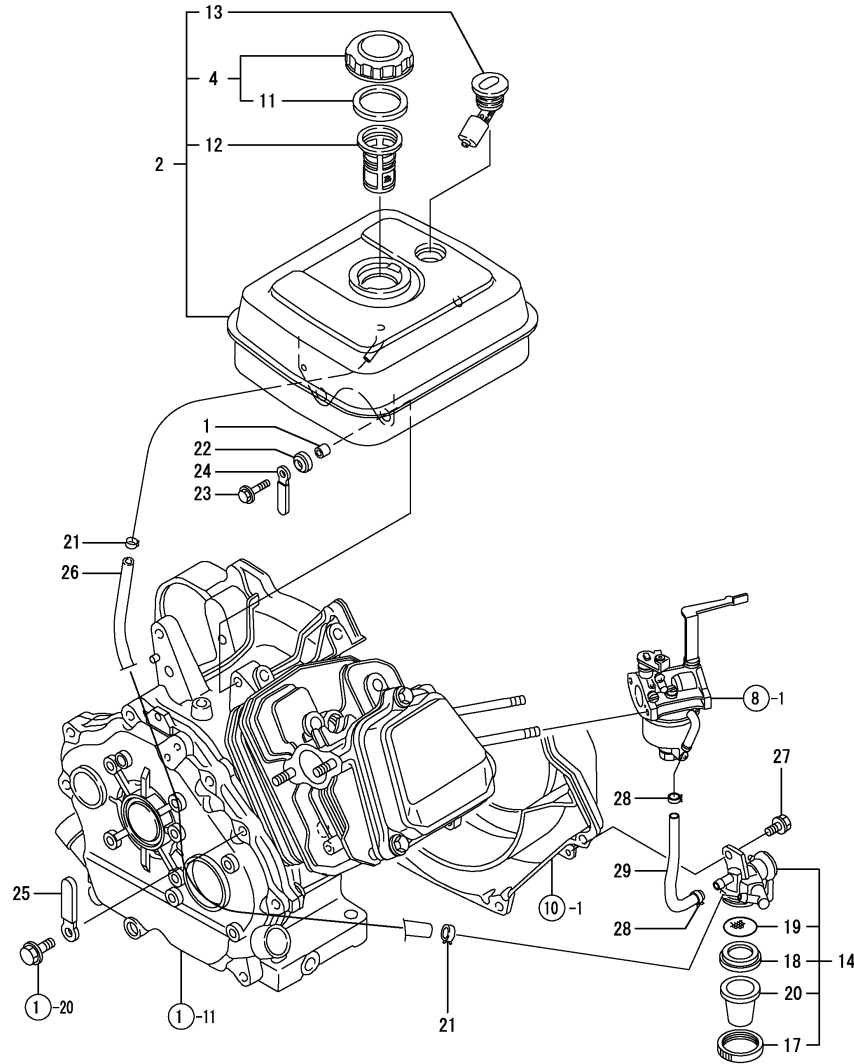
(A)=GA280SNS
(B)=
(C)=

(D)=
(E)=
(F)=

No.	Lev.	Parts No.	Description	Q'ty						I	R
				(A)	(B)	(C)	(D)	(E)	(F)		
1	1	160890-14051	CAMSHAFT ASSY	1							
1-1	1	160890-14052	CAMSHAFT ASSY	1							N
(A=E77826)											
3A	2	22512-050160	KEY, 5X 16	1							W
(A=E77826)											
9	2	160890-14560	SPRING,DECOMPRESSION	1							
10	1	22512-050160	KEY, 5X 16	1							Z
(A=E77826)											
11	1	160890-14200	TAPPET	2							
12	1	160890-14400	ROD, PUSH	2							
13	1	760890-21700	CRANKSHAFT ASSY	1							
16	2	160890-21200	GEAR, CRANKSHAFT	1							
17	2	160890-21220	GEAR, BALANCER	1							
18	2	22512-040160	KEY, 4X 16	1							
19	2	22512-040300	KEY, 4X 30	1							
20	1	26737-160002	NUT, M16	1							
21	1	22137-160000	WASHER, 16	1							
22	1	160890-22011	PISTON ASSY	1							
24	2	760890-22500	RING SET, PISTON	1							
28	1	160890-22300	PIN, PISTON	1							
29	1	22252-000190	RING, 19	2							
30	1	760890-23700	ROD ASSY, CONNECTING	1							
32	2	160810-23201	BOLT, CONNECTING ROD	2							
33	1	160890-21220	GEAR, BALANCER	1							
34	1	160890-28010	SHAFT, BALANCER	1							
36	1	22351-040008	PIN, SPRING 4.0X 8	1							
37	1	160310-14550	WASHER	1							
38	1	22512-070380	KEY, 7X 38	1							
39	1	26106-080202	BOLT, M8X 20 PLATED	1							

Remarks
(REMARKS)"EFFECTIVE MACHINE NO." OF
ENGINE IS INDICATED ON THE
ENGINE LABEL WHICH IS SHOWN
IN FIG.10.

Fig.7. FUEL OIL TANK & FUEL OIL LINE



(A)=GA280SNS

(B)=

(C)=

(D)=

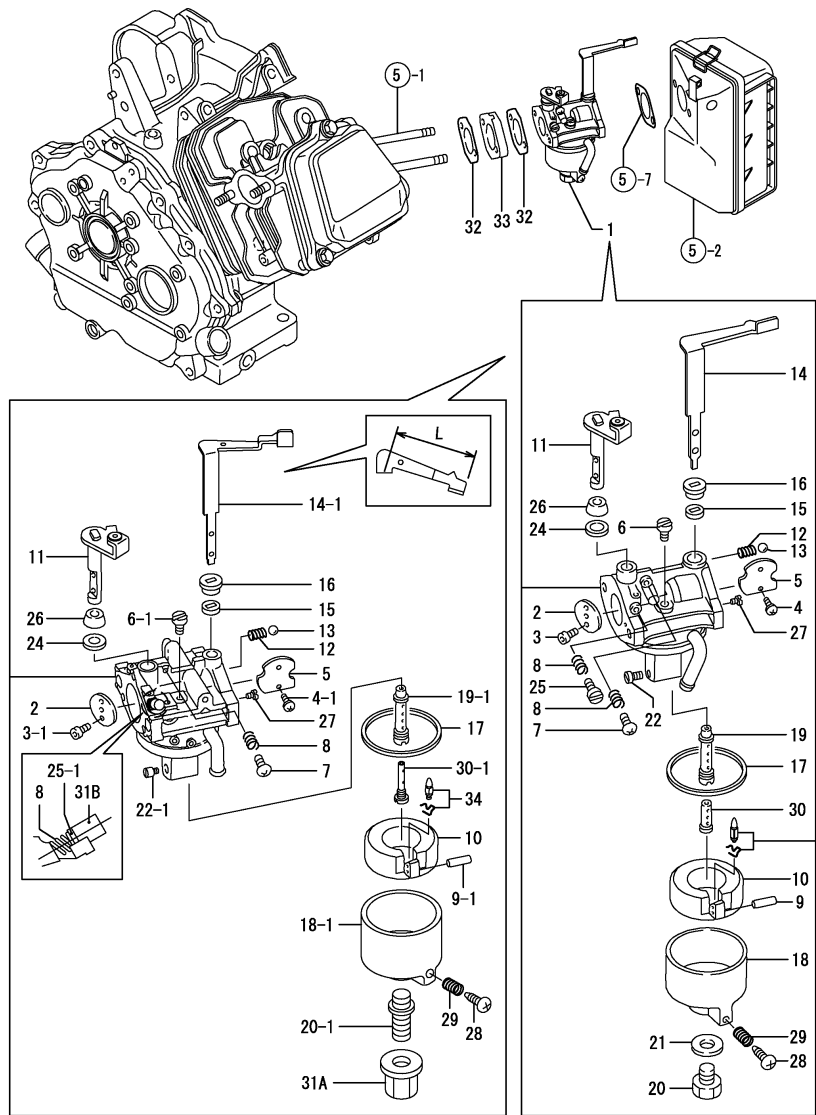
(E)=

(F)=

No.	Lev.	Parts No.	Description	Q'ty						I	R
				(A)	(B)	(C)	(D)	(E)	(F)		
1	1	114250-45310	COLLAR	4							
2	1	760890-55730	TANK ASSY, FUEL	1							
4	2	160710-55061	CAP ASSY	1							
11	3	160393-55050	GASKET	1							
12	2	160610-55100	FILTER, FUEL	1							
13	2	160762-55150	GAUGE, FUEL	1							
13-1	2	160708-55150	GAUGE, FUEL	1							N
(A=E79826)											
14	1	160692-55330	COCK ASSY, FUEL	1							
17	2	160710-55360	RING	1							
18	2	160710-55370	GASKET	1							
19	2	160710-55382	FILTER	1							
20	2	160903-55390	CUP, FUEL COCK L57	1							
20-1	2	160998-55390	BOWL, STRAINER	1							R
(A=E74738)											
21	1	106990-44660	CLIP, HOSE 12.5	2							
21-1	1	114270-59010	CLIP, HOSE 12	2							R
(A=E78096)											
22	1	160690-55462	DAMPER, FUEL TANK	4							
23	1	160690-55140	BOLT	4							
24	1	160710-78710	CLAMP, CORD	1							
25	1	160820-78710	CLAMP, CORD	1							
26	1	160920-59351	HOSE, FUEL A-510	1							
27	1	26106-060102	BOLT, M6X 10 PLATED	1							
28	1	119520-03990	CLIP, HOSE 10.5	2							
29	1	160792-59361	HOSE, FUEL B-180	1							

Remarks
 (REMARKS)"EFFECTIVE MACHINE NO." OF
 ENGINE IS INDICATED ON THE
 ENGINE LABEL WHICH IS SHOWN
 IN FIG.10.

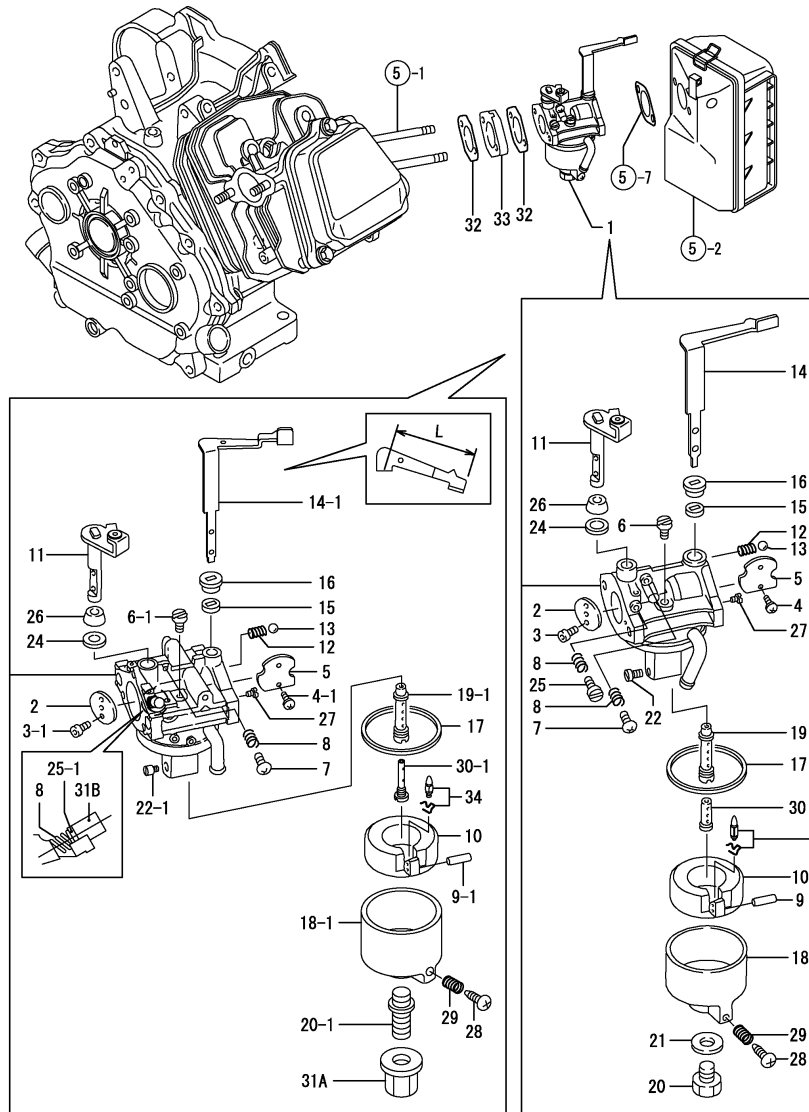
Fig.8. CARBURETOR



No.	Lev.	Parts No.	Description	Q'ty						I	R
				(A)	(B)	(C)	(D)	(E)	(F)		
1	1	160890-56040	CARBURETOR ASSY	1							
1-1	1	160890-57020	CARBURETOR ASSY	1							N
(A=E78096)											
1-2	1	160890-57021	CARBURETOR ASSY	1							N
(A=E78683)											
2	2	160992-56520	VALVE, THROTTLE	1							
3	2	160120-56670	SCREW	2							
3-1	2	160690-56560	SCREW	2							S
(A=E78096)											
4	2	160903-56670	SCREW	2							
4-1	2	160690-56570	SCREW	2							S
(A=E78096)											
5	2	160992-56530	VALVE, CHOKE	1							
6	2	160880-56740	JET, PILOT	1							
6-1	2	160593-57750	JET, PILOT	1							S
(A=E78096)											
7	2	160692-56710	SCREW	1							
8	2	181230-56380	SPRING	2							
9	2	160610-56630	PIN, FLOAT	1							
9-1	2	160690-56630	PIN, FLOAT	1							S
(A=E78096)											
10	2	160890-56620	FLOAT ASSY	1							
11	2	160992-56550	SHAFT, THROTTLE	1							
12	2	160310-56980	SPRING, CHOKE	1							
13	2	160310-56990	BALL, STEEL	1							
14	2	160998-56600	LEVER, CHOKE	1							
14-1	2	160998-56601	LEVER, CHOKE	1							S
(A=E78096)											
14-2	2	160998-56602	LEVER, CHOKE	1							S 2
(A=E78683)											
15	2	160810-56580	RING, CHOKE SHAFT	1							
16	2	160810-56590	RING, CHOKE LEVER	1							
17	2	160210-56610	WASHER	1							
18	2	160890-56430	BODY, FLOAT	1							
18-1	2	160792-57790	BODY, FLOAT	1							S
(A=E78096)											
19	2	160790-56550	NOZZLE, MAIN	1							
19-1	2	160998-56550	NOZZLE, MAIN	1							S
(A=E78096)											
20	2	160790-56610	BOLT	1							
20-1	2	160790-57700	STUD	1							S
(A=E78096)											
21	2	160910-56550	WASHER	1							Z
(A=E78096)											
22	2	160792-56570	JET, ENRICHMENT	1							
22-1	2	160890-57600	JET, MAIN	1							S
(A=E78096)											
24	2	160640-56850	SEAL	1							
25	2	160667-56750	ADJUSTER	1							
25-1	2	160890-57610	ADJUSTER	1							S
(A=E78096)											

Remarks
 (1) REPAIR PART.
 (2) L= REF.NO.14-1 58M/M, 14-2 53M/M.
 (REMARKS)"EFFECTIVE MACHINE NO." OF
 ENGINE IS INDICATED ON THE
 ENGINE LABEL WHICH IS SHOWN
 IN FIG.10.

Fig.8. CARBURETOR



(A)=GA280SNS

(B)=

(C)=

(D)=

(E)=

(F)=

No.	Lev.	Parts No.	Description	Q'ty						I	R
				(A)	(B)	(C)	(D)	(E)	(F)		
26	2	160702-56720	RING	1							
27	2	160890-56610	JET, PILOT	1							
28	2	160610-56900	SCREW	1							
29	2	181230-56380	SPRING	1							
30	2	160790-56570	NOZZLE	1							
30-1	2	160790-56571	NOZZLE	1							S
31A	2	160593-57540 (A=E78096)	NUT	1							W
31B	2	160691-56800 (A=E78096)	CAP	1							W
31B-1	2	160690-57800 (A=E78683)	CAP	1							N
32	1	160910-56151	GASKET, CARBURETOR	2							
33	1	160890-56160	INSULATOR	1							
34	1	160890-56790 (A=E78096)	VALVE, INJECTION	1							W 1

Remarks

(1) REPAIR PART.
 (2) L= REF.NO.14-1 58M/M, 14-2 53M/M.
 (REMARKS)"EFFECTIVE MACHINE NO." OF
 ENGINE IS INDICATED ON THE
 ENGINE LABEL WHICH IS SHOWN
 IN FIG.10.

Fig.9. GOVERNOR & CONTROL DEVICE

(A)=GA280SNS

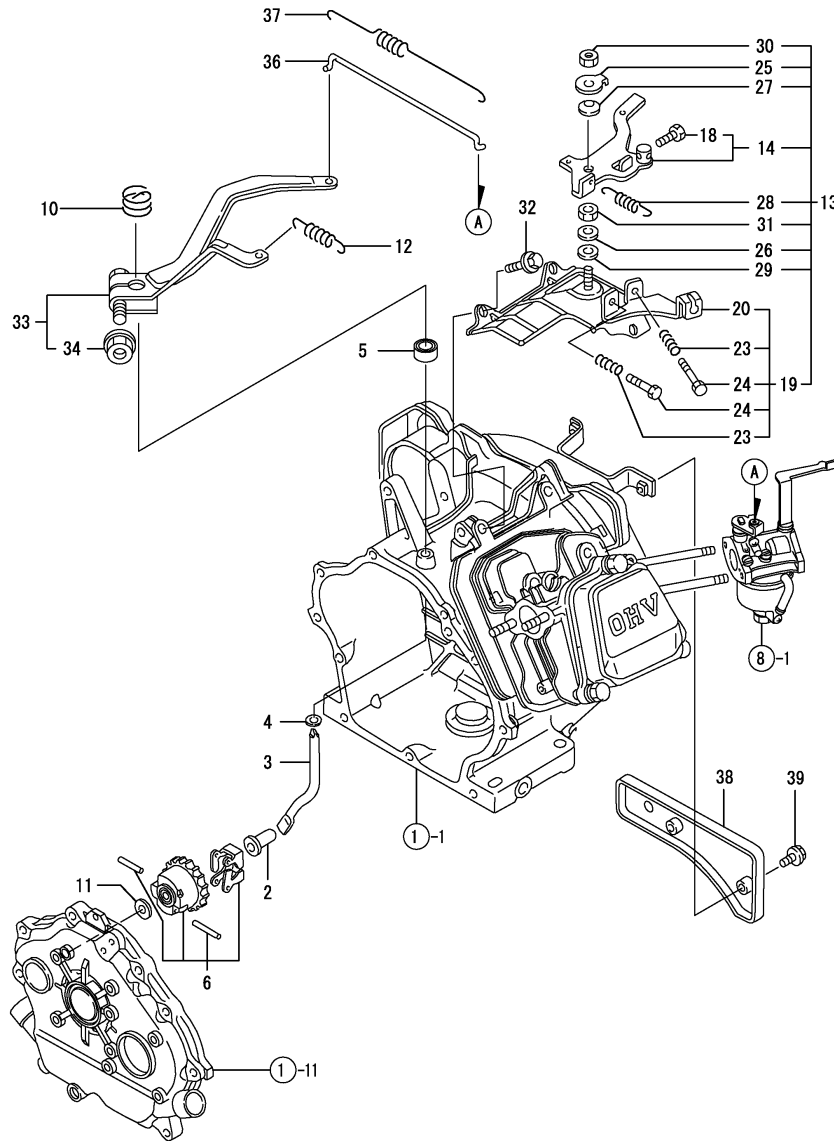
(B)=

(C)=

(D)=

(E)=

(F)=



No.	Lev.	Parts No.	Description	Q'ty						I	R
				(A)	(B)	(C)	(D)	(E)	(F)		
2	1	160690-61301	SPINDLE	1							
3	1	160690-61311	SHAFT	1							
4	1	160690-61450	WASHER	1							
5	1	114770-61600	SEAL, OIL	1							
6	1	160690-61600	GEAR ASSY, GOVERNOR	1							
10	1	160890-66050	SPRING, RETURN	1							
11	1	160120-76940	WASHER	1							
12	1	160890-66010	SPRING, GOVERNOR	1							
13	1	160890-66101	CONTROLLER ASSY	1							
14	2	160890-66081	LEVER ASSY, CONTROL	1							
18	3	26117-040088	BOLT M 4X 8 PLATED	1							
19	2	160890-66110	BASE ASSY	1							
20	3	160890-66142	BASE ASSY	1							
23	3	160520-66291	SPRING	2							
24	3	26117-040257	BOLT, M4X 25 PLATED	2							
25	2	160690-66160	WASHER	1							
26	2	160664-66170	WASHER	1							
27	2	160664-66180	SPRING	1							
28	2	160664-66220	SPRING, RETURN	1							
29	2	22137-060000	WASHER, 6	1							
30	2	26347-060002	NUT, M6	1							
31	2	26757-060002	NUT, LOCK M6	1							
31-1	2	26756-060002	NUT, LOCK M6	1							R
(A=EXXX)											
32	1	26476-060142	SCREW, TAPPING M6X14	3							
33	1	160890-66190	LEVER ASSY, GOVERNOR	1							
34	2	26366-060002	NUT, M6	1							
36	1	160690-66200	LINK, THROTTLE	1							
37	1	160690-66210	SPRING, TENSION	1							
38	1	160890-66310	PANEL	1							
39	1	26106-060162	BOLT, M6X 16 PLATED	2							

Remarks
 (REMARKS)"EFFECTIVE MACHINE NO." OF
 ENGINE IS INDICATED ON THE
 ENGINE LABEL WHICH IS SHOWN
 IN FIG.10.

Fig.10. FLY.MAGNET & STARTING DEVICE

(A)=GA280SNS

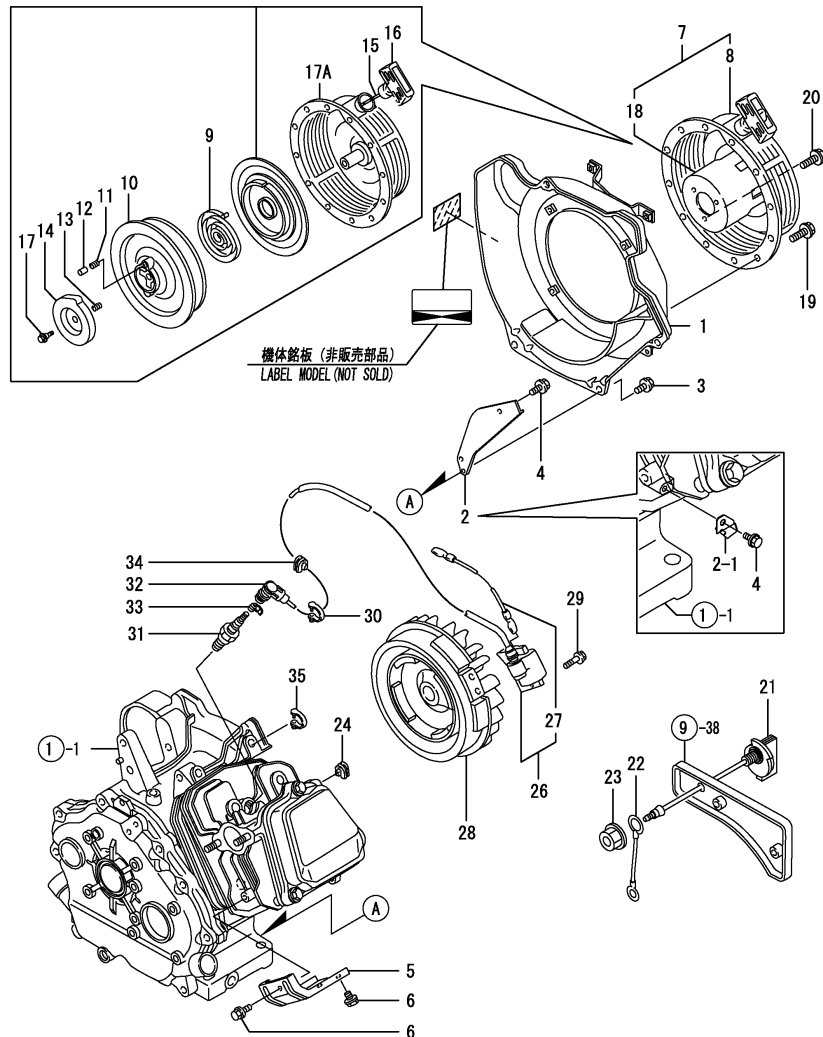
(B)=

(C)=

(D)=

(E)=

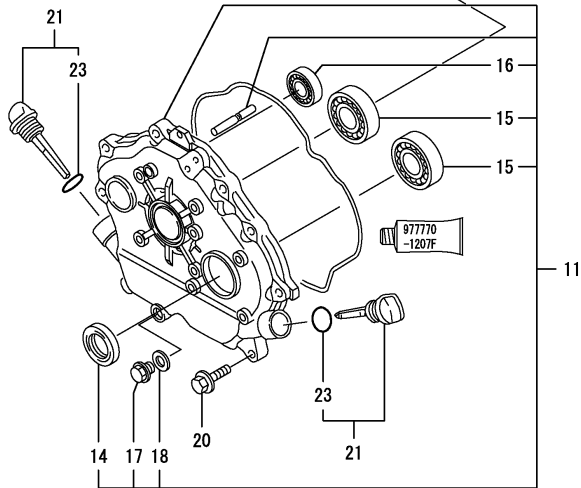
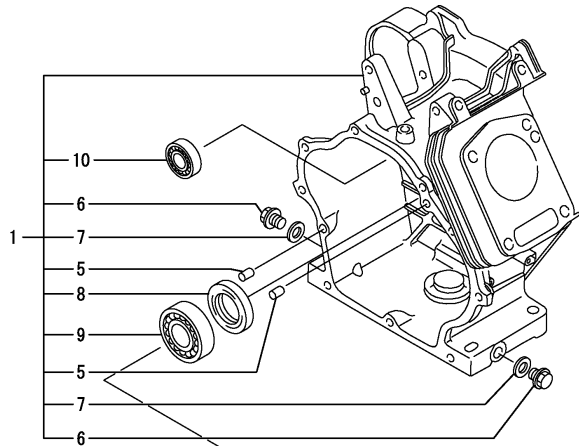
(F)=



No.	Lev.	Parts No.	Description	Qty						I	R
				(A)	(B)	(C)	(D)	(E)	(F)		
1	1	160891-45121	CASE, COOLING FAN	1							
1-1	1	160891-45122	CASE, COOLING FAN	1							N
(A=E77826)											
2	1	160890-45210	COVER	1							
2-1	1	160890-45240	COVER	1							S
(A=E74738)											
3	1	26476-060142	SCREW, TAPPING M6X14	4							
4	1	26476-060142	SCREW, TAPPING M6X14	1							
5	1	160890-45200	COVER, HEAD	1							
6	1	26476-060142	SCREW, TAPPING M6X14	2							
7	1	160890-76050	STARTER ASSY, RECOIL	1							
8	2	160890-76250	STARTER ASSY, RECOIL	1							
9	3	160890-76510	SPRING, SPIRAL	1							
10	3	160890-76520	REEL	1							
11	3	160890-76530	SPRING, DOG	2							
12	3	160890-76540	DOG	2							
13	3	160890-76550	SPRING, BRAKE	1							
14	3	160890-76570	RETAINER	1							
15	3	160890-76580	ROPE, STARTER	1							
16	3	160260-76620	KNOB, STARTER	1							
17	3	160641-76570	SCREW	1							
17A	3	160890-76600	CASE ASSY	1							W
(A=EXXX)											
18	2	160890-76590	PULLEY, STARTER	1							
19	1	26106-060082	BOLT, M6X 8 PLATED	4							
20	1	26106-060122	BOLT, M6X 12 PLATED	3							
21	1	160611-77250	SWITCH, STOP	1							
22	1	160495-77260	WIRE	1							
23	1	26366-080002	NUT, M8	1							
24	1	160763-12600	GROMMET	1							
26	1	160791-78522	COIL, IGNITION	1							
27	2	160690-78230	WIRE	1							
28	1	160890-78560	ROTOR	1							
29	1	26476-060252	SCREW, TAPPING M6X25	2							
29-1	1	26476-060302	SCREW, TAPPING M6X30	2							R
(A=EXXX)											
29-2	1	160690-04350	BOLT, M6X30	2							R
(A=E76044)											
30	1	29610-000650	CLAMP, SPEED 065	1							
31	1	160690-78020	PLUG, SPARK	1							
31-1	1	160690-78030	PLUG, SPARK N11YC	1							R
(A=EXXX)											
32	1	160700-78040	CAP, PLUG	1							
33	1	160700-78050	TERMINAL, PLUG	1							
34	1	160700-78720	GROMMET	1							
35	1	29610-000950	CLAMP, SPEED 095	1							

Remarks
 (REMARKS)"EFFECTIVE MACHINE NO." OF
 ENGINE IS INDICATED ON THE
 ENGINE LABEL WHICH IS SHOWN
 IN FIG.10.

Fig.11. CYLINDER BLOCK



(A)=GA280E-SCK

(B)=

(C)=

(D)=

(E)=

(F)=

No.	Lev.	Parts No.	Description	Q'ty						I	R
				(A)	(B)	(C)	(D)	(E)	(F)		
1	1	760890-01561	BLOCK ASSY, CYLINDER	1							
5	2	114270-01600	PIN, M8X12	2							
6	2	160610-01690	PLUG, M12	2							
7	2	104200-59170	GASKET, 12	2							
8	2	160110-02220	SEAL, OIL	1							
9	2	129900-26250	BEARING, BALL 6206C3	1							
10	2	160903-28020	BEARING, 6202C3E	1							
11	1	760792-01502	COVER ASSY	1							
14	2	160110-02220	SEAL, OIL	1							
15	2	129900-26250	BEARING, BALL 6206C3	2							
16	2	160903-28020	BEARING, 6202C3E	1							
17	2	160610-01690	PLUG, M12	1							
18	2	104200-59170	GASKET, 12	1							
20	1	26106-080302	BOLT, M8X 30 PLATED	9							
21	1	160810-01740	CAP ASSY	2							
23	2	24311-000180	O-RING, 1AP18.0	2							

Remarks
 (REMARKS)"EFFECTIVE MACHINE NO." OF
 ENGINE IS INDICATED ON THE
 ENGINE LABEL WHICH IS SHOWN
 IN FIG.19.

Fig.12. CYLINDER HEAD & BONNET

(A)=GA280E-SCK

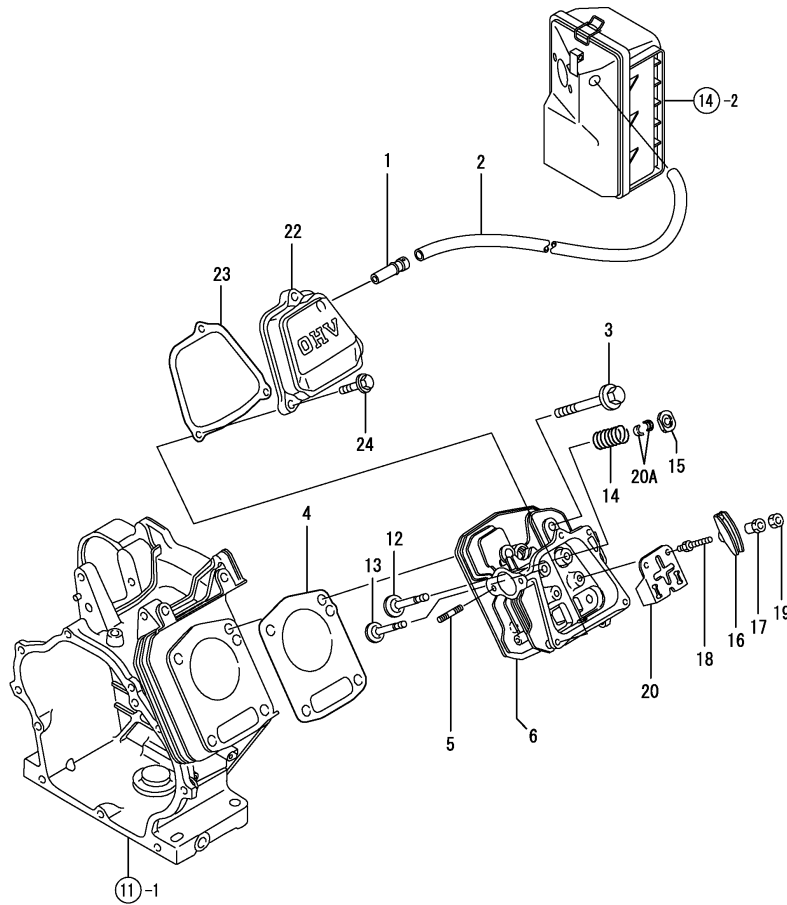
(B)=

(C)=

(D)=

(E)=

(F)=



No.	Lev.	Parts No.	Description	Q'ty						I	R
				(A)	(B)	(C)	(D)	(E)	(F)		
1	1	160610-03050	BREATHER ASSY	1							
2	1	160820-03180	PIPE , BREATHER	1							
3	1	160890-01210	BOLT, FLANGE M10X70	4							
4	1	160890-01330	GASKET, HEAD	1							
4-1	1	160890-01331	GASKET, HEAD	1							N
(A=E76261)											
5	1	160890-04330	STUD, 2D8X18	2							
6	1	160890-11011	HEAD ASSY, CYLINDER	1							
6-1	1	160890-11012	HEAD ASSY, CYLINDER	1							N
(A=E79097)											
12	1	160890-11101	VALVE, INTAKE	1							
13	1	160890-11111	VALVE, EXHAUST	1							
14	1	160890-11120	SPRING, VALVE	2							
15	1	160890-11190	RETAINER, SPRING	2							
16	1	160890-11202	ARM, ROCKER	2							
17	1	160690-11221	PIVOT, ROCKER ARM	2							
17-1	1	160690-11222	PIVOT, ROCKER ARM	2							R
(A=E76261)											
18	1	160890-11270	BOLT	2							
19	1	160690-11280	NUT, M6X0.5	2							
20	1	160890-11290	PLATE, GUIDE	1							
20A	1	720380-11570	COTTER	2							W
(A=E76261)											
22	1	160890-11300	BONNET ASSY, HEAD	1							
23	1	160890-11311	GASKET, BONNET	1							
24	1	26106-060352	BOLT, M6X 35 PLATED	3							

Remarks
 (REMARKS)"EFFECTIVE MACHINE NO." OF
 ENGINE IS INDICATED ON THE
 ENGINE LABEL WHICH IS SHOWN
 IN FIG.19.

Fig.13. TOOL & LABEL

(A)=GA280E-SCK

(B)=

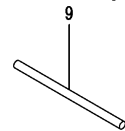
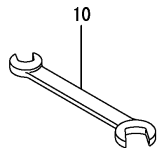
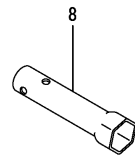
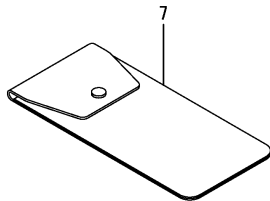
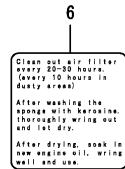
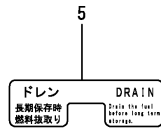
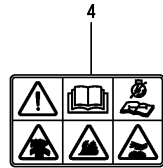
(C)=

(D)=

(E)=

(F)=

No.	Lev.	Parts No.	Description	Q'ty						I	R
				(A)	(B)	(C)	(D)	(E)	(F)		
3	1	160798-07100	LABEL, FINGER START	1							
4	1	160991-07260	LABEL	1							
5	1	160690-07260	LABEL, DRAIN	1							
6	1	160664-07370	LABEL, AIR CLEANER	1							
7	1	160110-92610	BAG, TOOL	1							
8	1	160120-92700	WRENCH, 21 L86	1							
9	1	160110-92710	HANDLE, WRENCH	1							
10	1	28110-100120	SPANNER, 10X12	1							



Remarks
(REMARKS)"EFFECTIVE MACHINE NO." OF ENGINE IS INDICATED ON THE ENGINE LABEL WHICH IS SHOWN IN FIG.19.

Fig.14. AIR CLEANER & MUFFLER

(A)=GA280E-SCK

(B)=

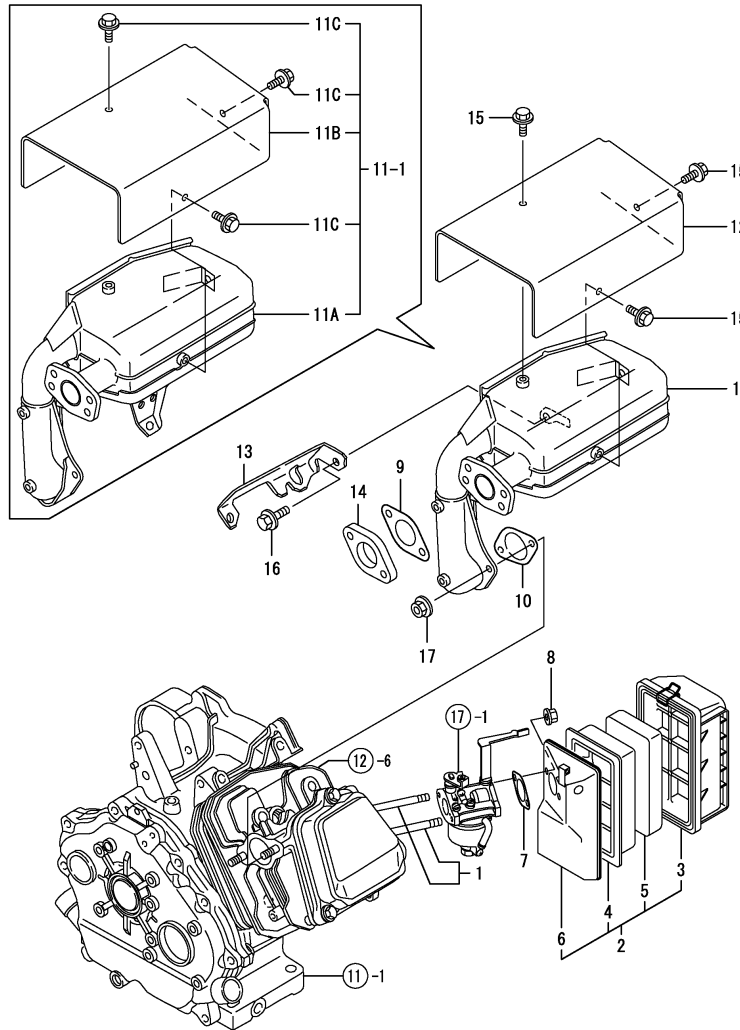
(C)=

(D)=

(E)=

(F)=

Q'ty I R



No.	Lev.	Parts No.	Description	(A)	(B)	(C)	(D)	(E)	(F)	I	R
1	1	160890-04320	STUD, M8X 85	2							
1-1	1	160998-04340	STUD, 2D 8X 85	2							N
(A=E77391)											
2	1	160890-12500	CLEANER ASSY, AIR	1							
2-1	1	160890-12501	CLEANER ASSY, AIR	1							N
(A=E77391)											
3	2	160790-12510	COVER, AIR CLEANER	1							
4	2	160790-12530	HOLDER, ELEMENT	1							
4-1	2	160790-12531	HOLDER, ELEMENT	1							F 1
(A=E77391)											
5	2	160790-12540	ELEMENT	1							
6	2	160890-12520	CASE, AIR CLEANER	1							
6-1	2	160890-12521	CASE, AIR CLEANER	1							F 1
(A=E77391)											
7	1	160910-56151	GASKET, CARBURETOR	1							
8	1	26366-080002	NUT, M8	2							
8-1	1	160998-04330	NUT, M8	2							N
(A=E77391)											
9	1	114250-13201	GASKET, MUFFLER	1							
10	1	160890-13210	GASKET, MUFFLER	1							
10-1	1	160890-13211	GASKET, MUFFLER	1							N
(A=E76261)											
11	1	160891-13501	MUFFLER	1							
11-1	1	160891-13030	MUFFLER ASSY	1							N
(A=E78939)											
11-2	1	160891-13031	MUFFLER ASSY	1							N
(A=*2009.04)											
11A	2	160998-13421	MUFFLER	1							W
(A=E78939)											
11A-1	2	160998-13422	MUFFLER	1							N
(A=*2009.04)											
11B	2	160890-13520	COVER	1							W
(A=E78939)											
11C	2	26106-060082	BOLT, M6X 8 PLATED	3							W
(A=E78939)											
12	1	160890-13520	COVER	1							Z
(A=E78939)											
13	1	160890-13570	BRACKET, MUFFLER	1							Z
(A=E78939)											
14	1	114252-13900	FLANGE	1							
15	1	26106-060082	BOLT, M6X 8 PLATED	4							Z
(A=E78939)											
16	1	26106-080142	BOLT, M8X 14 PLATED	1							Z
(A=E78939)											
17	1	26366-080002	NUT, M8	2							

Remarks

(1) REF.NO.4-1 & 6-1 INTERCHANGEABLE BY SET.
 (REMARKS)"EFFECTIVE MACHINE NO." OF ENGINE IS INDICATED ON THE ENGINE LABEL WHICH IS SHOWN IN FIG.19.

Fig.15. CRANKSHAFT,PISTON & CAMSHAFT

(A)=GA280E-SCK

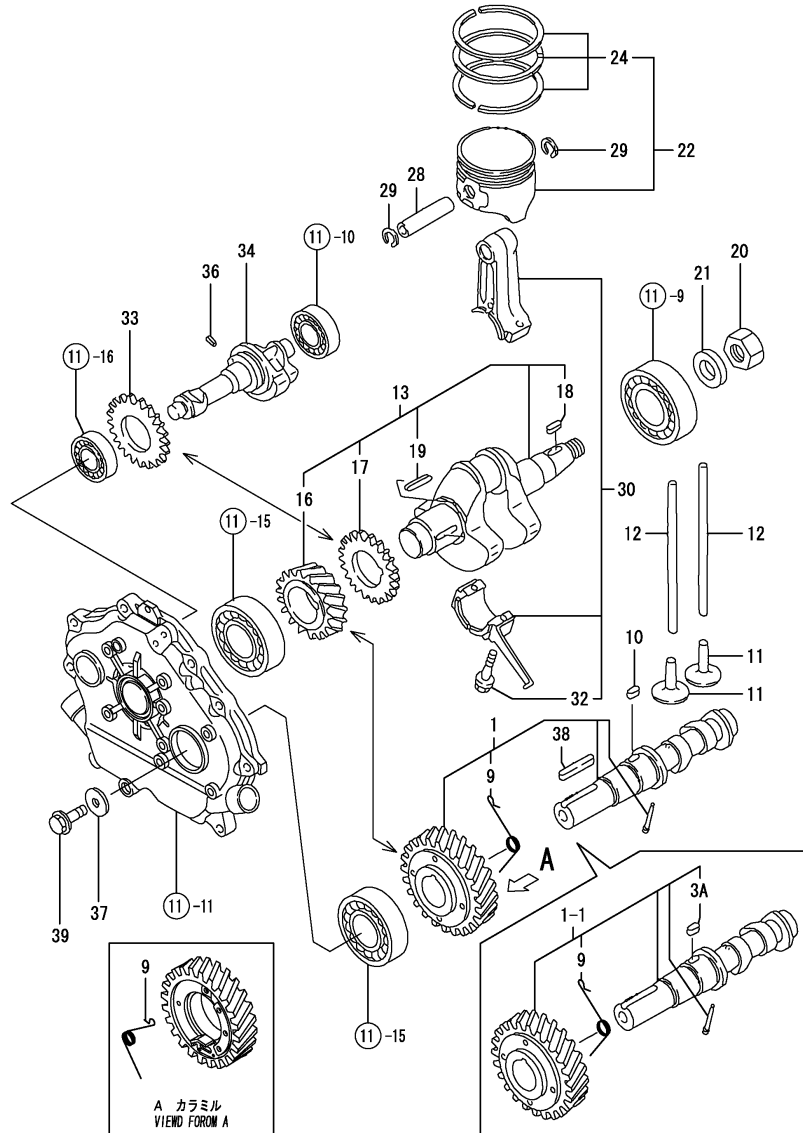
(B)=

(C)=

(D)=

(E)=

(F)=



No.	Lev.	Parts No.	Description	Q'ty						I	R
				(A)	(B)	(C)	(D)	(E)	(F)		
1	1	160890-14051	CAMSHAFT ASSY	1							
1-1	1	160890-14052	CAMSHAFT ASSY	1							N
		(A=E77391)									
3A	2	22512-050160	KEY, 5X 16	1							W
		(A=E77391)									
9	2	160890-14560	SPRING,DECOMPRESSION	1							
10	1	22512-050160	KEY, 5X 16	1							Z
		(A=E77391)									
11	1	160890-14200	TAPPET	2							
12	1	160890-14400	ROD, PUSH	2							
13	1	760890-21700	CRANKSHAFT ASSY	1							
16	2	160890-21200	GEAR, CRANKSHAFT	1							
17	2	160890-21220	GEAR, BALANCER	1							
18	2	22512-040160	KEY, 4X 16	1							
19	2	22512-040300	KEY, 4X 30	1							
20	1	26737-160002	NUT, M16	1							
21	1	22137-160000	WASHER, 16	1							
22	1	160890-22011	PISTON ASSY	1							
24	2	760890-22500	RING SET, PISTON	1							
28	1	160890-22300	PIN, PISTON	1							
29	1	22252-000190	RING, 19	2							
30	1	760890-23700	ROD ASSY, CONNECTING	1							
32	2	160810-23201	BOLT, CONNECTING ROD	2							
33	1	160890-21220	GEAR, BALANCER	1							
34	1	160890-28010	SHAFT, BALANCER	1							
36	1	22351-040008	PIN, SPRING 4.0X 8	1							
37	1	160310-14550	WASHER	1							
38	1	22512-070380	KEY, 7X 38	1							
39	1	26106-080202	BOLT, M8X 20 PLATED	1							

Remarks
 (REMARKS)"EFFECTIVE MACHINE NO." OF
 ENGINE IS INDICATED ON THE
 ENGINE LABEL WHICH IS SHOWN
 IN FIG.19.

Fig.16. FUEL OIL TANK & FUEL OIL LINE

(A)=GA280E-SCK

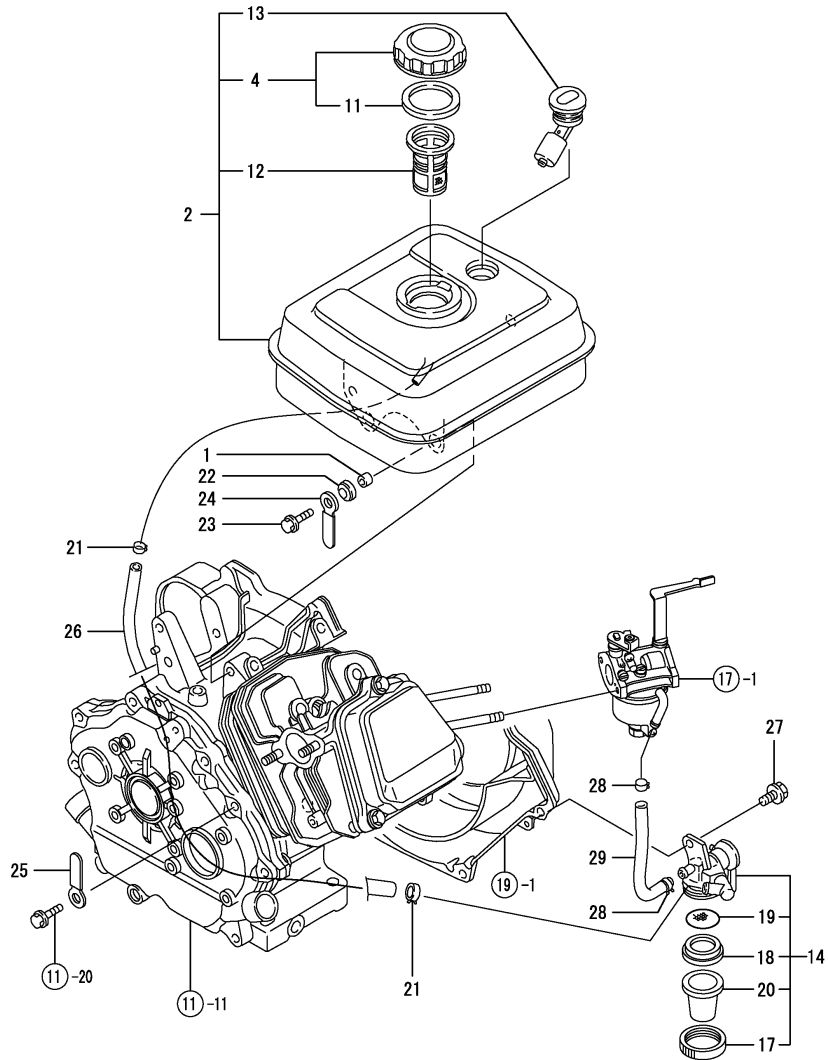
(B)=

(C)=

(D)=

(E)=

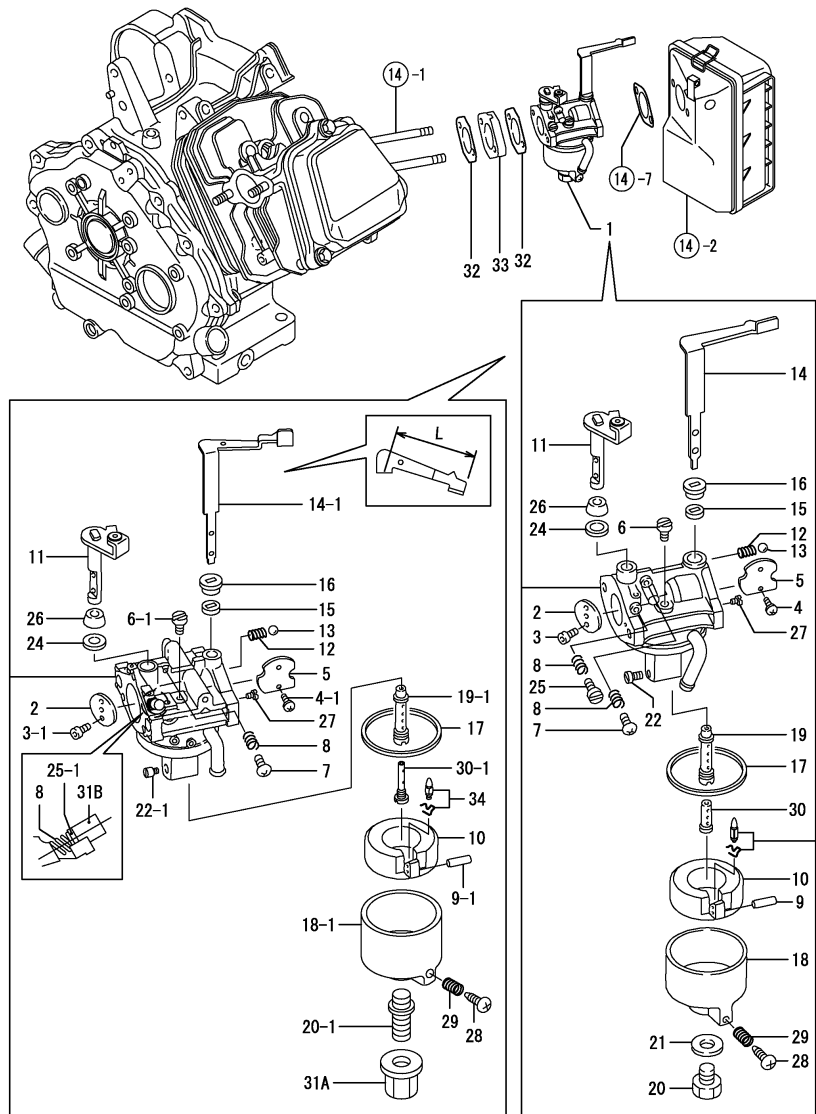
(F)=



No.	Lev.	Parts No.	Description	Q'ty						I	R
				(A)	(B)	(C)	(D)	(E)	(F)		
1	1	114250-45310	COLLAR	4							
2	1	760890-55730	TANK ASSY, FUEL	1							
4	2	160710-55061	CAP ASSY	1							
11	3	160393-55050	GASKET	1							
12	2	160610-55100	FILTER, FUEL	1							
13	2	160762-55150	GAUGE, FUEL	1							
13-1	2	160708-55150	GAUGE, FUEL	1							N
(A=E77391)											
14	1	160692-55330	COCK ASSY, FUEL	1							
17	2	160710-55360	RING	1							
18	2	160710-55370	GASKET	1							
19	2	160710-55382	FILTER	1							
20	2	160998-55390	BOWL, STRAINER	1							
21	1	106990-44660	CLIP, HOSE 12.5	2							
21-1	1	114270-59010	CLIP, HOSE 12	2							R
(A=E78061)											
22	1	160690-55462	DAMPER, FUEL TANK	4							
23	1	160690-55140	BOLT	4							
24	1	160710-78710	CLAMP, CORD	1							
25	1	160820-78710	CLAMP, CORD	1							
26	1	160920-59351	HOSE, FUEL A-510	1							
27	1	26106-060102	BOLT, M6X 10 PLATED	1							
28	1	119520-03990	CLIP, HOSE 10.5	2							
29	1	160792-59361	HOSE, FUEL B-180	1							

Remarks
 (REMARKS)"EFFECTIVE MACHINE NO." OF
 ENGINE IS INDICATED ON THE
 ENGINE LABEL WHICH IS SHOWN
 IN FIG.19.

Fig.17. CARBURETOR



Remarks

(1) REPAIR PART.
 (2) L= REF.NO.14-1 58M/M, 14-2 53M/M.
 (REMARKS)"EFFECTIVE MACHINE NO." OF
 ENGINE IS INDICATED ON THE
 ENGINE LABEL WHICH IS SHOWN
 IN FIG.19.

(A)=GA280E-SCK
 (B)=
 (C)=

(D)=
 (E)=
 (F)=

No.	Lev.	Parts No.	Description	Q'ty						I	R
				(A)	(B)	(C)	(D)	(E)	(F)		
1	1	160890-56040	CARBURETOR ASSY	1							
1-1	1	160890-57020	CARBURETOR ASSY	1							N
		(A=E78061)									
1-2	1	160890-57021	CARBURETOR ASSY	1							N
		(A=E78939)									
2	2	160992-56520	VALVE, THROTTLE	1							
3	2	160120-56670	SCREW	2							
3-1	2	160690-56560	SCREW	2							S
		(A=E78061)									
4	2	160903-56670	SCREW	2							
4-1	2	160690-56570	SCREW	2							S
		(A=E78061)									
5	2	160992-56530	VALVE, CHOKE	1							
6	2	160880-56740	JET, PILOT	1							
6-1	2	160593-57750	JET, PILOT	1							S
		(A=E78061)									
7	2	160692-56710	SCREW	1							
8	2	181230-56380	SPRING	2							
9	2	160610-56630	PIN, FLOAT	1							
9-1	2	160690-56630	PIN, FLOAT	1							S
		(A=E78061)									
10	2	160890-56620	FLOAT ASSY	1							
11	2	160992-56550	SHAFT, THROTTLE	1							
12	2	160310-56980	SPRING, CHOKE	1							
13	2	160310-56990	BALL, STEEL	1							
14	2	160998-56600	LEVER, CHOKE	1							
14-1	2	160998-56601	LEVER, CHOKE	1							S
		(A=E78061)									
14-2	2	160998-56602	LEVER, CHOKE	1							S 2
		(A=E78939)									
15	2	160810-56580	RING, CHOKE SHAFT	1							
16	2	160810-56590	RING, CHOKE LEVER	1							
17	2	160210-56610	WASHER	1							
18	2	160890-56430	BODY, FLOAT	1							
18-1	2	160792-57790	BODY, FLOAT	1							S
		(A=E78061)									
19	2	160790-56550	NOZZLE, MAIN	1							
19-1	2	160998-56550	NOZZLE, MAIN	1							S
		(A=E78061)									
20	2	160790-56610	BOLT	1							
20-1	2	160790-57700	STUD	1							S
		(A=E78061)									
21	2	160910-56550	WASHER	1							Z
		(A=E78061)									
22	2	160792-56570	JET, ENRICHMENT	1							
22-1	2	160890-57600	JET, MAIN	1							S
		(A=E78061)									
24	2	160640-56850	SEAL	1							
25	2	160667-56750	ADJUSTER	1							
25-1	2	160890-57610	ADJUSTER	1							S
		(A=E78061)									

Fig.17. CARBURETOR

(A)=GA280E-SCK

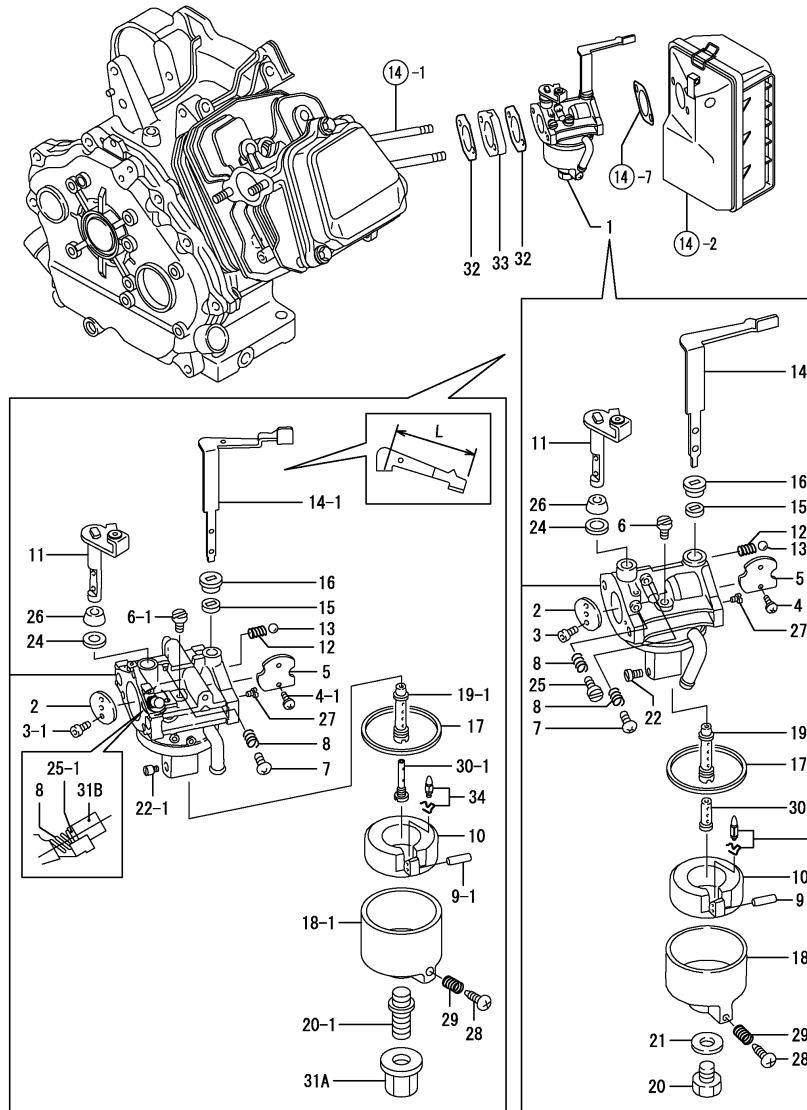
(B)=

(C)=

(D)=

(E)=

(F)=



No.	Lev.	Parts No.	Description	Q'ty						I	R
				(A)	(B)	(C)	(D)	(E)	(F)		
26	2	160702-56720	RING	1							
27	2	160890-56610	JET, PILOT	1							
28	2	160610-56900	SCREW	1							
29	2	181230-56380	SPRING	1							
30	2	160790-56570	NOZZLE	1							
30-1	2	160790-56571	NOZZLE	1							S
31A	2	160593-57540 (A=E78061)	NUT	1							W
31B	2	160691-56800 (A=E78061)	CAP	1							W
31B-1	2	160690-57800 (A=E78939)	CAP	1							N
32	1	160910-56151	GASKET, CARBURETOR	2							
33	1	160890-56160	INSULATOR	1							
34	1	160890-56790 (A=E78061)	VALVE, INJECTION	1							W 1

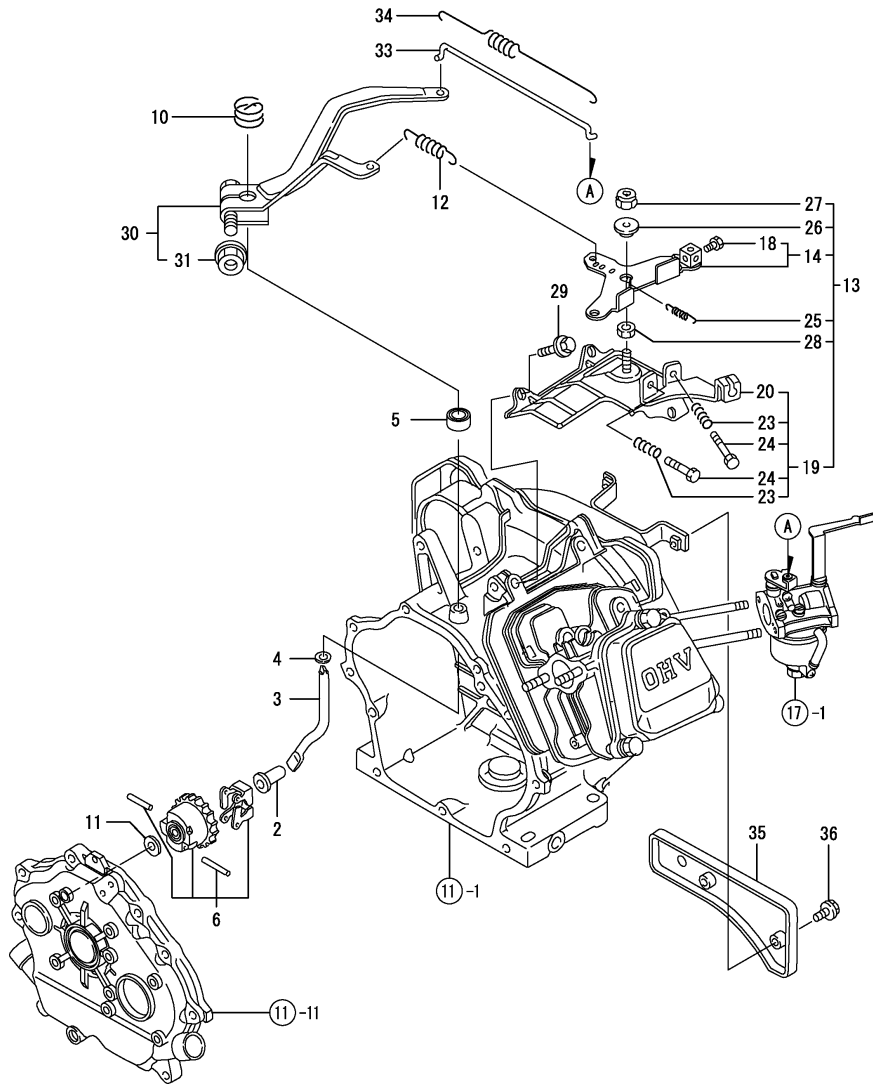
Remarks

(1) REPAIR PART.

(2) L= REF.NO.14-1 58M/M, 14-2 53M/M.

(REMARKS)"EFFECTIVE MACHINE NO." OF ENGINE IS INDICATED ON THE ENGINE LABEL WHICH IS SHOWN IN FIG.19.

Fig.18. GOVERNOR & CONTROL DEVICE



(A)=GA280E-SCK

(B)=

(C)=

(D)=

(E)=

(F)=

No.	Lev.	Parts No.	Description	Q'ty						I	R
				(A)	(B)	(C)	(D)	(E)	(F)		
2	1	160690-61301	SPINDLE	1							
3	1	160690-61311	SHAFT	1							
4	1	160690-61450	WASHER	1							
5	1	114770-61600	SEAL, OIL	1							
6	1	160690-61600	GEAR ASSY, GOVERNOR	1							
10	1	160890-66050	SPRING, RETURN	1							
11	1	160120-76940	WASHER	1							
12	1	160890-66010	SPRING, GOVERNOR	1							
13	1	160991-66111	CONTROLLER ASSY	1							
14	2	160692-66051	LEVER ASSY, CONTROL	1							
18	3	26117-040088	BOLT M 4X 8 PLATED	1							
19	2	160890-66110	BASE ASSY	1							
20	3	160890-66142	BASE ASSY	1							
23	3	160520-66291	SPRING	2							
24	3	26117-040257	BOLT, M4X 25 PLATED	2							
25	2	160664-66220	SPRING, RETURN	1							
26	2	160670-66350	COLLAR	1							
27	2	26347-060002	NUT, M6	1							
28	2	26757-060002	NUT, LOCK M6	1							
28-1	2	26756-060002	NUT, LOCK M6	1							R
(A=EXXX)											
29	1	26476-060142	SCREW, TAPPING M6X14	3							
30	1	160890-66190	LEVER ASSY, GOVERNOR	1							
31	2	26366-060002	NUT, M6	1							
33	1	160690-66200	LINK, THROTTLE	1							
34	1	160690-66210	SPRING, TENSION	1							
35	1	160890-66310	PANEL	1							
36	1	26106-060162	BOLT, M6X 16 PLATED	2							

Remarks
 (REMARKS)"EFFECTIVE MACHINE NO." OF
 ENGINE IS INDICATED ON THE
 ENGINE LABEL WHICH IS SHOWN
 IN FIG.19.

Fig.19. FLY.MAGNET & STARTING DEVICE

(A)=GA280E-SCK

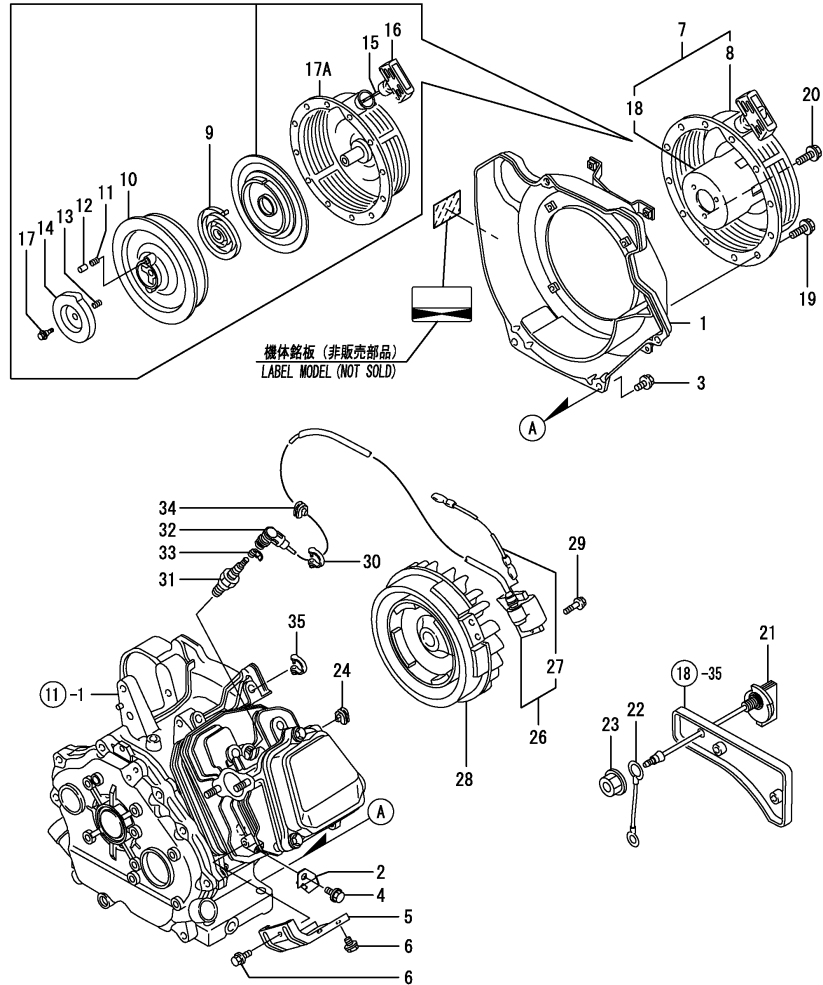
(B)=

(C)=

(D)=

(E)=

(F)=



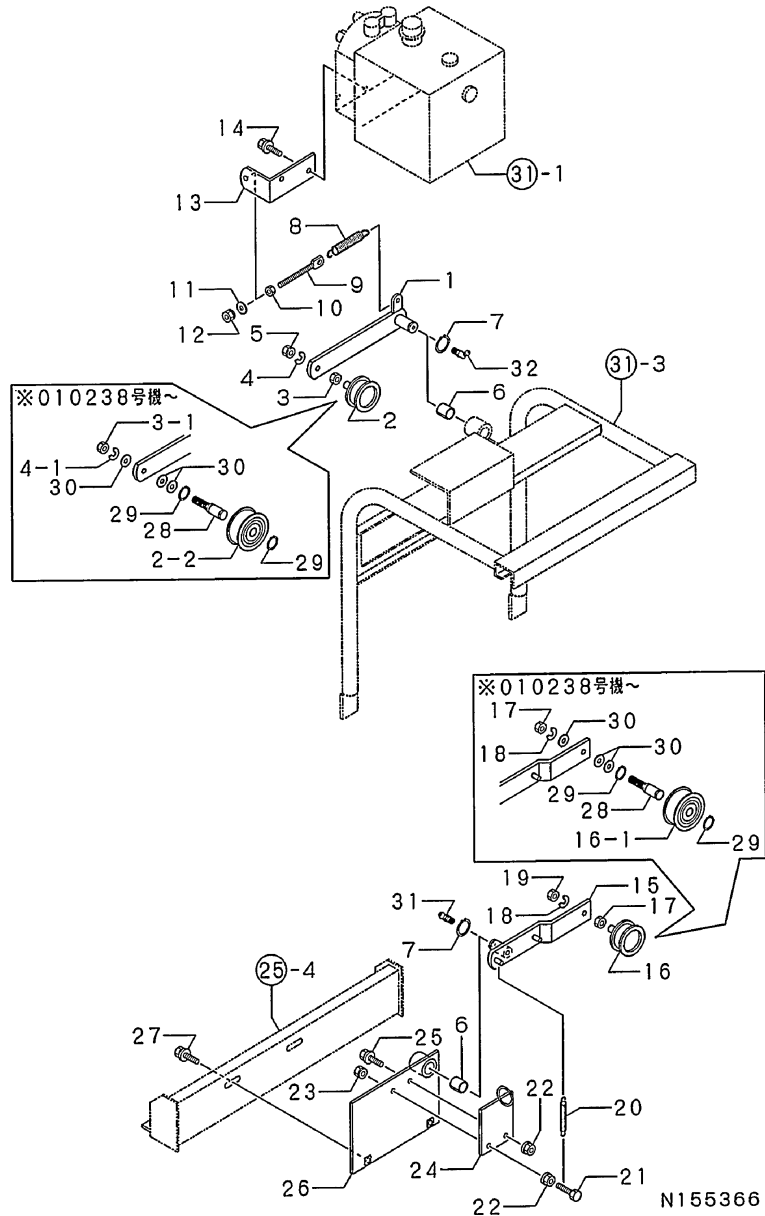
No.	Lev.	Parts No.	Description	Q'ty						I	R
				(A)	(B)	(C)	(D)	(E)	(F)		
1	1	160891-45121	CASE, COOLING FAN	1							
1-1	1	160891-45122	CASE, COOLING FAN	1							N
(A=E76983)											
2	1	160890-45240	COVER	1							
3	1	26476-060142	SCREW, TAPPING M6X14	4							
4	1	26476-060142	SCREW, TAPPING M6X14	1							
5	1	160890-45200	COVER, HEAD	1							
6	1	26476-060142	SCREW, TAPPING M6X14	2							
7	1	160890-76050	STARTER ASSY, RECOIL	1							
8	2	160890-76250	STARTER ASSY, RECOIL	1							
9	3	160890-76510	SPRING, SPIRAL	1							
10	3	160890-76520	REEL	1							
11	3	160890-76530	SPRING, DOG	2							
12	3	160890-76540	DOG	2							
13	3	160890-76550	SPRING, BRAKE	1							
14	3	160890-76570	RETAINER	1							
15	3	160890-76580	ROPE, STARTER	1							
16	3	160260-76620	KNOB, STARTER	1							
17	3	160641-76570	SCREW	1							
17A	3	160890-76600	CASE ASSY	1							W
(A=EXXX)											
18	2	160890-76590	PULLEY, STARTER	1							
19	1	26106-060082	BOLT, M6X 8 PLATED	4							
20	1	26106-060122	BOLT, M6X 12 PLATED	3							
21	1	160611-77250	SWITCH, STOP	1							
22	1	160495-77260	WIRE	1							
23	1	26366-080002	NUT, M8	1							
24	1	160763-12600	GROMMET	1							
26	1	160791-78522	COIL, IGNITION	1							
27	2	160690-78230	WIRE	1							
28	1	160890-78560	ROTOR	1							
29	1	26476-060252	SCREW, TAPPING M6X25	2							
29-1	1	26476-060302	SCREW, TAPPING M6X30	2							R
(A=EXXX)											
29-2	1	160690-04350	BOLT, M6X30	2							R
(A=E76261)											
30	1	29610-000650	CLAMP, SPEED 065	1							
31	1	160793-78010	PLUG, SPARK	1							
32	1	160700-78040	CAP, PLUG	1							
33	1	160700-78050	TERMINAL, PLUG	1							
34	1	160700-78720	GROMMET	1							
35	1	29610-000950	CLAMP, SPEED 095	1							Z
(A=EXXX)											

Remarks
 (REMARKS)"EFFECTIVE MACHINE NO." OF
 ENGINE IS INDICATED ON THE
 ENGINE LABEL WHICH IS SHOWN
 IN FIG.19.

Fig.20. TENSION ARM

(A)=MCG1200FLD
(B)=MCG1200F-PQ
(C)=

(D)=
(E)=
(F)=

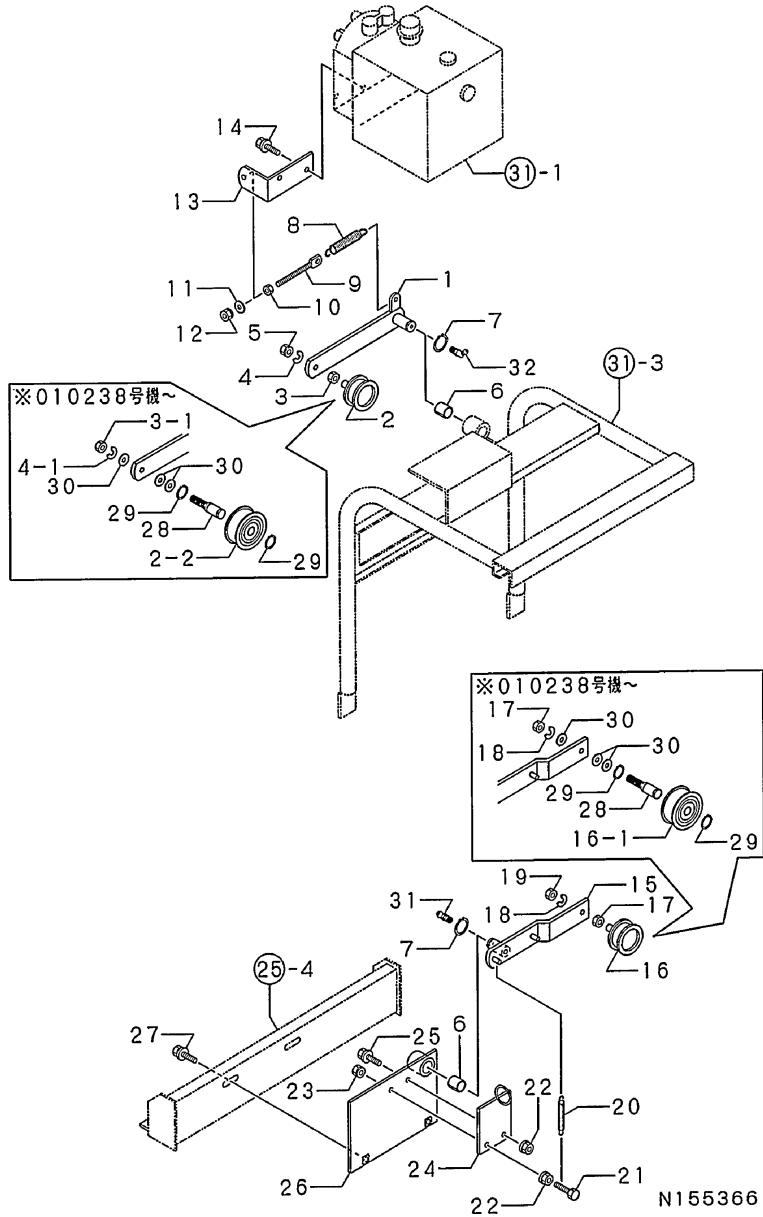


No.	Lev.	Parts No.	Description	Q'ty						I	R
				(A)	(B)	(C)	(D)	(E)	(F)		
1	1	1N1995-41370	TENSION ARM	1							
1-1	1	1N1995-41371	ARM, TENSION	1							N
(A=F010238)											
2	1	1N1185-22060	ROLLER S,TENSION	1							
2-1	1	1N1291-22030	ROLLER SS,TENSION	1							N
(A=F010043)											
2-2	1	1N1995-41460	IDLER	1							S
(A=F010238)											
3	1	26717-100002	NUT, M10	1							
3-1	1	26717-120002	NUT, M12	1							S
(A=F010043)											
4	1	22217-100000	WASHER, SPRING 10	1							
4-1	1	22217-120000	WASHER, SPRING 12	1							S
(A=F010043)											
5	1	26051-100002	NUT, M10	1							
5-1	1	26757-120002	NUT, LOCK M12	1							S
(A=F010043)											
6	1	1N3513-61100	BUSH	2	1						
7	1	22242-000180	RING, 18	2	1						
8	1	1N1070-53000	SPRING,SD.CLTCH.LVR.	1							
9	1	1N1360-22090	SCREW 8X94,ADJUST	1							
10	1	26757-080002	NUT, LOCK M8	1							
11	1	22137-080000	WASHER, 8	1							
12	1	26051-080002	NUT, M8	1							
13	1	1N1995-41390	HOOK, SPRING	1							
14	1	26018-080164	BOLT M 8X 16	2							
15	1	1N1995-41320	ARM,MAIN CLUTCH	1	1						
15-1	1	1N1995-41321	WASHER 10	1	1						N
(A=F010238) (B=F010238)											
16	1	1N1291-22030	ROLLER SS,TENSION	1	1						
16-1	1	1N1995-41460	IDLER	1	1						S
(A=F010238) (B=F010238)											
17	1	26717-120002	NUT, M12	1	1						
18	1	22217-120000	WASHER, SPRING 12	1	1						
19	1	26757-120002	NUT, LOCK M12	1	1						
20	1	1N1190-45000	SPRING 11X72.5,TENS.	1	1						
20-1	1	1N1151-53000	SPRING 12.5X54,TENS.	1	1						S
(A=F010238) (B=F010238)											
21	1	26117-060354	BOLT M 6X 35 PLATED	1	1						
22	1	26367-060002	NUT, M6	2	2						
23	1	26051-060002	NUT, M6	1	1						
24	1	1N1995-41420	SHOE, HOSE	1							
25	1	26018-060164	BOLT M 6X 16	1	1						
26	1	1N1995-41340	BRACKET,CLUTCH	1	1						
27	1	26018-080204	BOLT M 8X 20	2	2						
28	1	1N1995-41450	SHAFT,IDLER	2	1						W
(A=F010238) (B=F010238)											
29	1	22242-000150	RING, 15	4	2						W
(A=F010238) (B=F010238)											
30	1	22137-120000	WASHER, 12	6	3						W
(A=F010238) (B=F010238)											

Fig.20. TENSION ARM

(A)=MCG1200FLD
 (B)=MCG1200F-PQ
 (C)=

(D)=
 (E)=
 (F)=

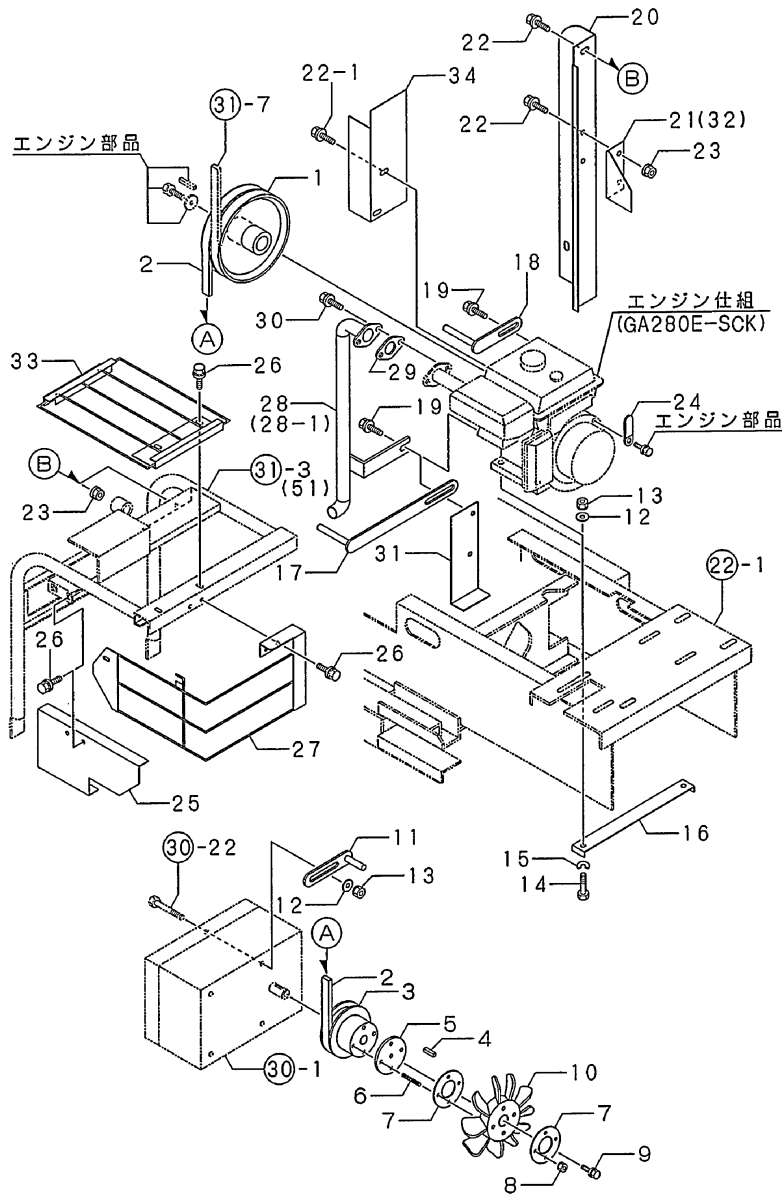


No.	Lev.	Parts No.	Description	Qty						I	R
				(A)	(B)	(C)	(D)	(E)	(F)		
31	1	24761-010000 (A=F010238) (B=F010238)	NIPPLE, GREASE M6F	1	1						W
32	1	1N1530-24300 (A=F010238)	NIPPLE B-M6F, GREASE	1							W

Fig.21. PULLEY

(A)=MCG1200FLD
(B)=MCG1200F-PQ
(C)=

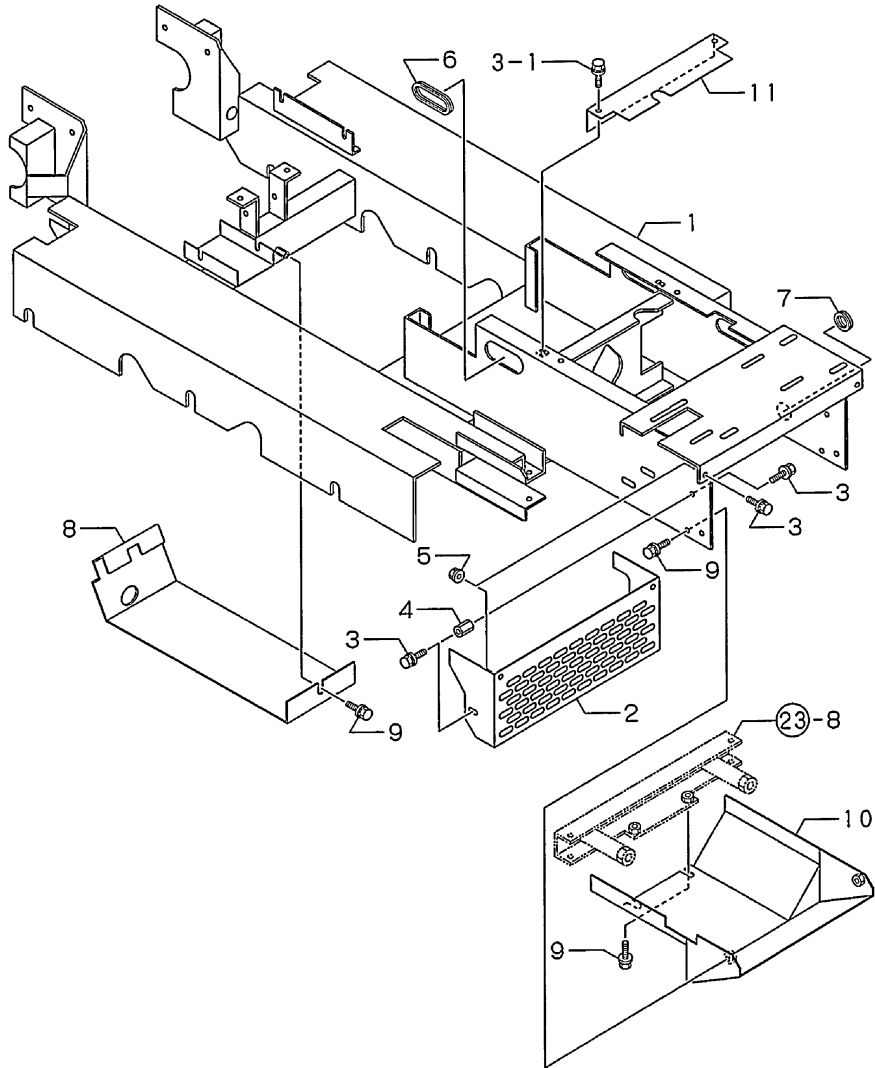
(D)=
(E)=
(F)=



N155367

No.	Lev.	Parts No.	Description	Qty						I	R
				(A)	(B)	(C)	(D)	(E)	(F)		
1	1	1N1995-21000	PULLEY,ENGINE	1	1						
2	1	25123-003201	V-BELT, B32H	1	1						
2-1	1	25123-003401	V-BELT, B34H	1	1						S
2-2	1	1N1995-26000	V-BELT	1	1						N
		(A=F010544) (B=F010544)									
		(A=F010797) (B=F010797)									
3	1	1N3508-21000	PULLEY	1	1						
4	1	22550-050250	KEY 5X25	1	1						
5	1	1N3516-21020	RETAINER,PULLEY	1	1						
6	1	1N3516-41720	BOLT M6X60	4	4						
7	1	1N3507-21030	STOPPER(B)	2	2						
8	1	26051-060002	NUT, M6	4	4						
9	1	26018-060164	BOLT M 6X 16	1	1						
10	1	1N3508-24010	FAN	1	1						
11	1	1N1291-22020	GUARD 40,BELT	2	2						
12	1	22137-080000	WASHER, 8	6	6						
13	1	26051-080002	NUT, M8	6	6						
14	1	26116-080452	BOLT, M8X 45 PLATED	4	4						
14-1	1	1N1995-11040	BOLT 10X50	4	4						N
		(A=F010043) (B=F010043)									
15	1	22217-080000	WASHER, SPRING 8	4	4						
16	1	1N1995-11030	HINGE	2	2						
17	1	1N1530-16040	GUIDE 70X165,BELT	1	1						
18	1	1N1530-22060	BELT GUIDE	1	1						
19	1	26018-080164	BOLT M 8X 16	2	2						
20	1	1N1995-58250	COVER B,BELT	1	1						
21	1	1N1995-58240	COVER A,BELT	1	1						
22	1	26018-060164	BOLT M 6X 16	4	4						
22-1	1	26018-060164	BOLT M 6X 16	6	6						K
		(A=F010238) (B=F010238)									
23	1	26367-060002	NUT, M6	4	4						
24	1	1E6020-83890	CLIP	1	1						
25	1	1N1995-58170	COVER, SILENCER	1	1						
25-1	1	1N1995-58171	COVER, SILENCER	1	1						N
		(A=F010238) (B=F010238)									
26	1	1N1291-58080	BOLT 6X16 W/P&SW.	4	8						
27	1	1N1995-58270	MUFFLER GURD	1	1						
28	1	1N1995-11000	PIPE, EXHAUST	1	1						
28-1	1	1N1995-11001	PIPE, EXHAUST	1	1						S
		(A=F010238) (B=F010238)									
29	1	114252-13900	FLANGE	1	1						
30	1	26018-080204	BOLT M 8X 20	2	2						
31	1	1N1995-58260	COVER C,BELT	1	1						
32	1	1N1995-58340	COVER A,BELT	1	1						
33	1	1N1995-58360	MUFFLER GURD	1	1						
34	1	1N1995-58430	PLATE	1	1						W
		(A=F010238) (B=F010238)									

Fig.22. BODY FRAME



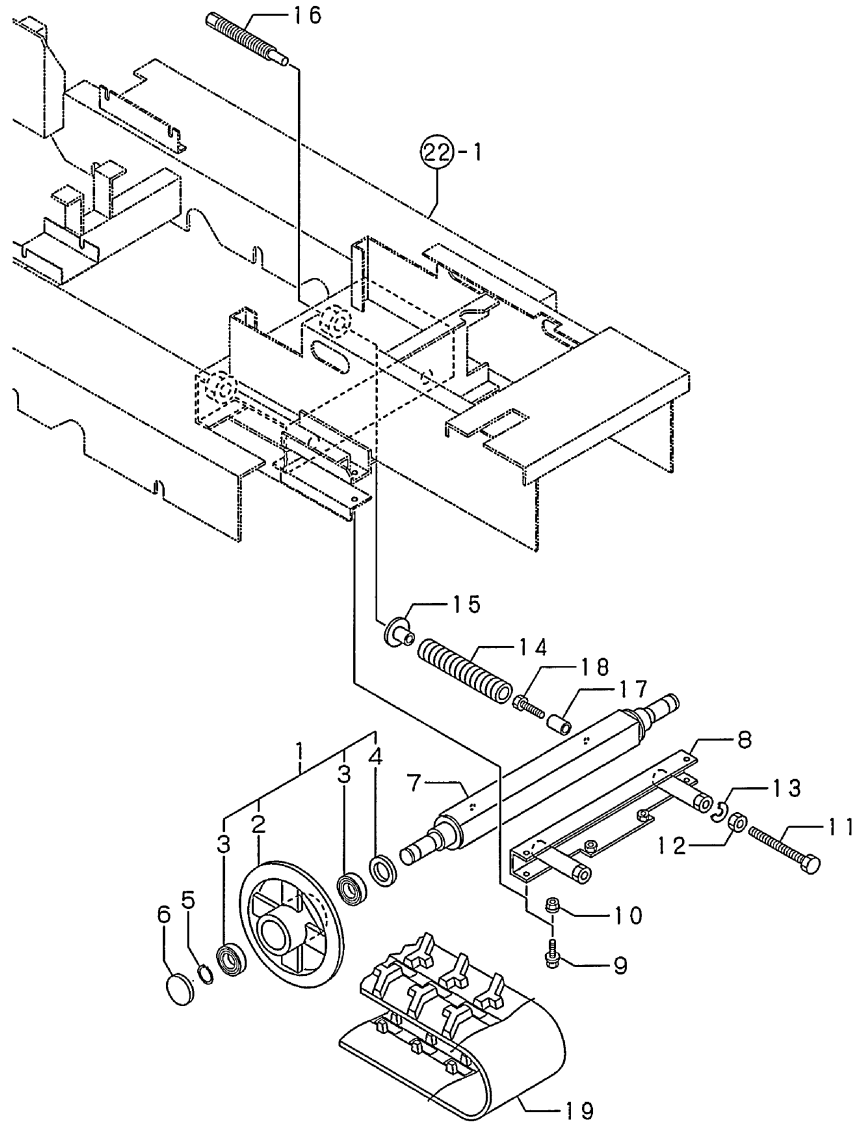
N155368

(A)=MCG1200FLD
(B)=MCG1200F-PQ
(C)=

(D)=
(E)=
(F)=

No.	Lev.	Parts No.	Description	Q'ty						I	R
				(A)	(B)	(C)	(D)	(E)	(F)		
1	1	1N1995-31000	FRAME,BODY	1	1						
1-1	1	1N1995-31001	FRAME,BODY	1	1						N
		(A=F010238) (B=F010238)									
2	1	1N1995-58060	HOUSING,BLOWER	1	1						
2-1	1	1N1995-58061	HOUSING,BLOWER	1	1						N
		(A=F010238) (B=F010238)									
3	1	1N1291-58080	BOLT 6X16 W/P&SW.	6	6						
3-1	1	1N1291-58080	BOLT 6X16 W/P&SW.	8	8						K
		(A=F010238) (B=F010238)									
4	1	1N1995-58320	NUT M6X25	2	2						
5	1	26367-060002	NUT, M6	2	2						
6	1	1N1185-53000	GROMMET 70	2	2						
7	1	1N1185-53010	GROMMET 35	1	1						
8	1	1N1995-58010	GURD,UNDER F	1	1						
9	1	26018-080204	BOLT M 8X 20	5	5						
10	1	1N1995-58020	GURD,UNDER R	1	1						
10-1	1	1N1995-58021	GURD,UNDER R	1	1						N
		(A=F010238) (B=F010238)									
11	1	1N1995-58420	COVER	1	1						W
		(A=F010238) (B=F010238)									

Fig.23. IDLER



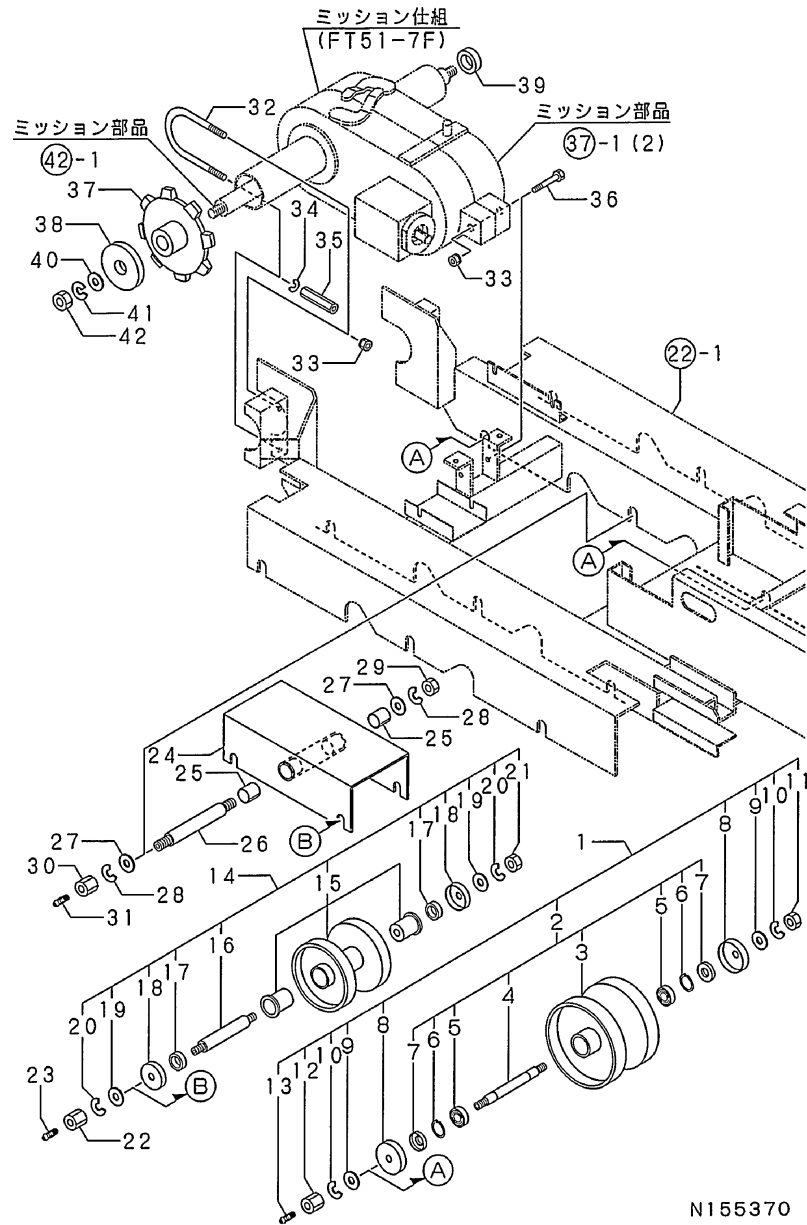
(A)=MCG1200FLD
(B)=MCG1200F-PQ
(C)=

(D)=
(E)=
(F)=

No.	Lev.	Parts No.	Description	Q'ty						I	R
				(A)	(B)	(C)	(D)	(E)	(F)		
1	1	7N3542-35000	FLOAT RING ASSY.	2	2						
2	2	1N3503-35070	WHEEL, IDLE	2	2						
3	2	24101-060054	BEARING, BALL 6005	4	4						
4	2	24421-354707	SEAL, OIL TC354707	2	2						
5	1	22242-000250	RING, 25	2	2						
6	1	1N3506-35020	SEAL CAP	2	2						
7	1	1N1995-35040	SHAFT, FRONT IDLER	1	1						
8	1	1N1995-37000	HINGE	1	1						
9	1	26018-100254	BOLT M10X 25	4	4						
10	1	26367-100002	NUT, M10	4	4						
11	1	26117-161504	BOLT, M16X150 PLATED	2	2						
12	1	26757-160002	NUT, LOCK M16	2	2						
13	1	22217-160000	WASHER, SPRING 16	2	2						
14	1	1N1995-35010	SPRING	2	2						
15	1	1N1995-35030	SEAT, SPRING	2	2						
16	1	1N1995-35060	SCREW	2	2						
17	1	1N1995-68060	GUIDE, SPRING	2	2						
18	1	1N1995-35080	BOLT M12X45	2	2						
19	1	1N1995-37020	CRAWLER	2	2						

N155369

Fig.24. TRACK ROLLER



(A)=MCG1200FLD
(B)=MCG1200F-PQ
(C)=

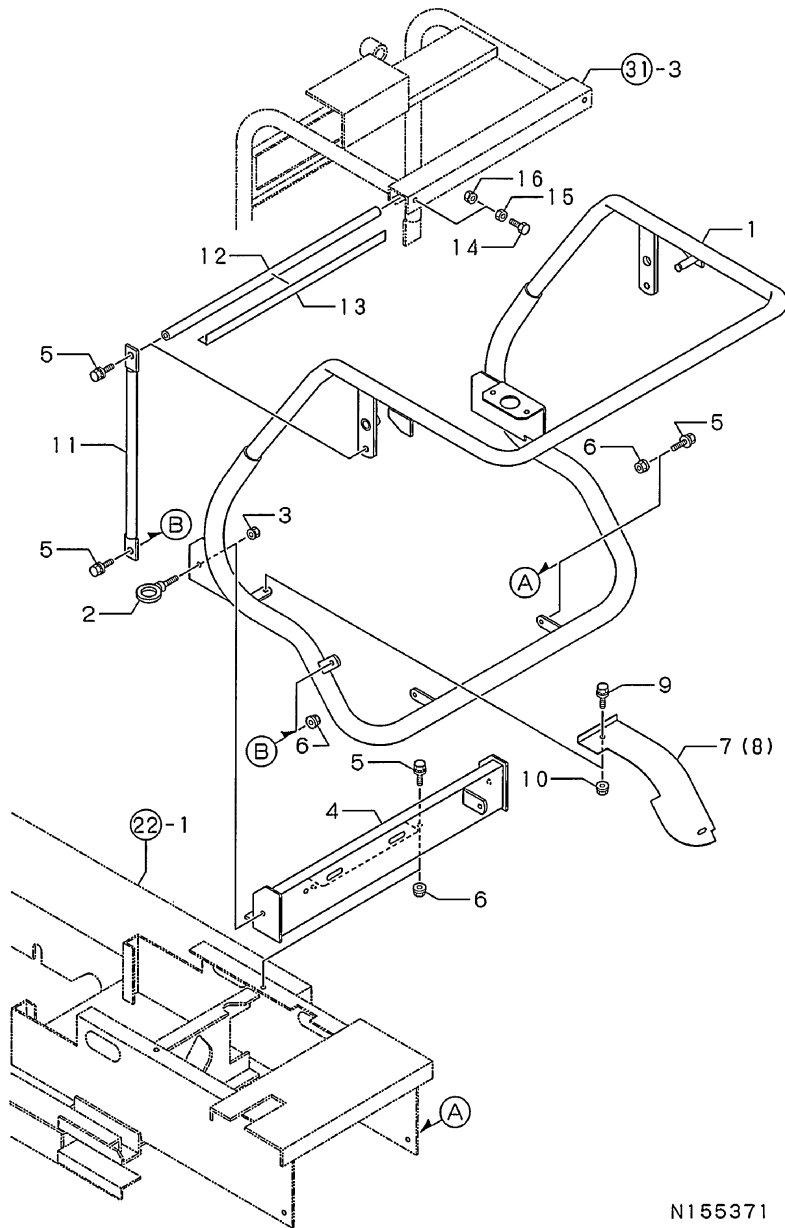
(D)=
(E)=
(F)=

No.	Lev.	Parts No.	Description	Qty						I	R
				(A)	(B)	(C)	(D)	(E)	(F)		
1	1	7N3542-36010	LWR.TRANK ROLLER SET	4	4						
2	2	7N3542-36000	LWR.TRANK ROLLER ASY	4	4						
3	3	1N3542-36040	LOWER RING	4	4						
4	3	1N3545-36010	SHAFT	4	4						
5	3	24101-060044	BEARING, BALL 6004	8	8						
6	3	22242-000200	RING, 20	8	8						
7	3	24421-204212	SEAL, OIL TC204212	8	8						
8	2	1N1240-35030	BASE,STAND	8	8						
9	2	22137-160000	WASHER, 16	8	8						
10	2	22217-160000	WASHER, SPRING 16	8	8						
11	2	26757-160002	NUT, LOCK M16	4	4						
12	1	1N1101-36050	NUT M16,HIGH	4	4						
13	1	24761-060000	NIPPLE, GREASE MT6X1	4	4						
14	1	7N3560-36001	ROLLER ASSY.,TRACK	4	4						
19	2	22137-120000	WASHER, 12	8	8						
20	2	22217-120000	WASHER, SPRING 12	8	8						
21	2	26717-120002	NUT, M12	4	4						
22	1	1N3561-36000	NUT M12,HIGH	4	4						
23	1	24761-060000	NIPPLE, GREASE MT6X1	4	4						
24	1	1N1995-36020	EQUALIZER	2	2						
25	1	1N1415-68300	LINER ML2225,M	4	4						
26	1	1N1995-36000	SHAFT	2	2						
27	1	22137-160000	WASHER, 16	4	4						
28	1	22217-160000	WASHER, SPRING 16	4	4						
29	1	26757-160002	NUT, LOCK M16	2	2						
30	1	1N1101-36050	NUT M16,HIGH	2	2						
31	1	24761-060000	NIPPLE, GREASE MT6X1	2	2						
32	1	1N3501-35030	U-BOLT	2	2						
33	1	26051-100002	NUT, M10	3	3						
34	1	22217-100000	WASHER, SPRING 10	2	2						
35	1	1N1995-35070	NUT M10X70	2	2						
36	1	26117-100702	BOLT M10X 70 PLATED	1	1						
37	1	1N1995-35090	SPROCKET	2	2						
38	1	1N1995-35100	PLATE	1	1						
39	1	1N1995-35110	COLLAR,AXLE	1	1						
40	1	22137-160000	WASHER, 16	2	2						
41	1	22217-160000	WASHER, SPRING 16	2	2						
42	1	26717-160002	NUT, M16	2	2						

Fig.25. HANDLE

(A)=MCG1200FLD
 (B)=MCG1200F-PQ
 (C)=

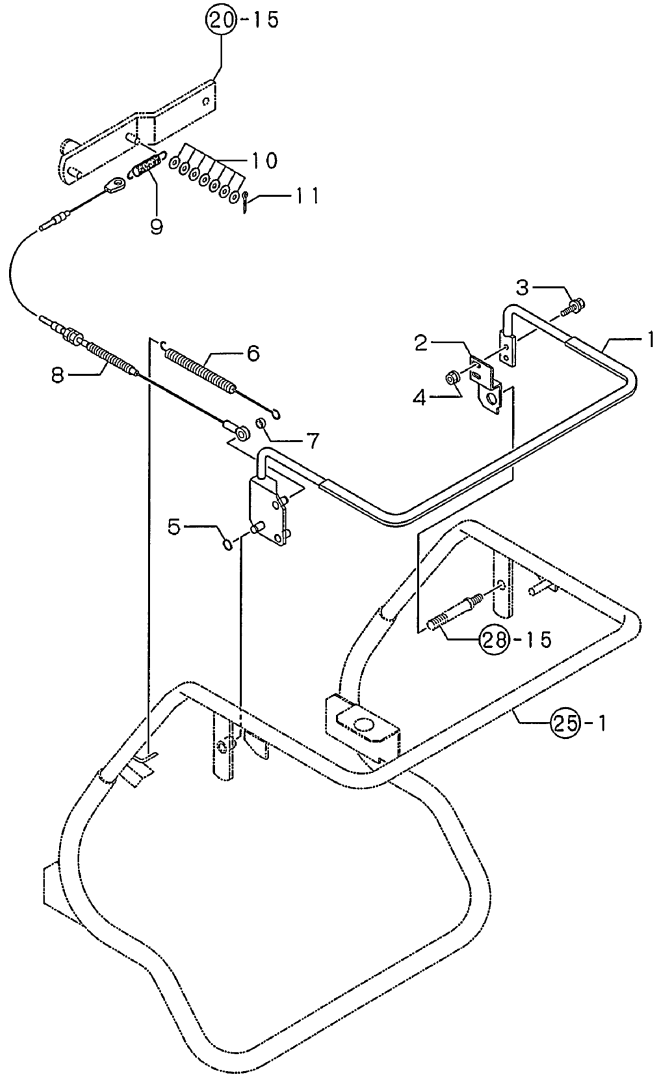
(D)=
 (E)=
 (F)=



N155371

No.	Lev.	Parts No.	Description	Qty						I	R
				(A)	(B)	(C)	(D)	(E)	(F)		
1	1	1N1995-47000	HANDLE	1	1						
2	1	1N1995-31280	BOLT M10	2	2						
3	1	26051-100002	NUT, M10	2	2						
4	1	1N1995-47140	HANDLE BRACKET	1	1						
4-1	1	1N1995-47141 (A=F010238) (B=F010238)	BRACKET	1	1						N
5	1	26018-080204	BOLT M 8X 20	8	8						
6	1	26367-080002	NUT, M8	6	6						
7	1	1N1995-58070	COVER L,FENDER	1	1						
8	1	1N1995-58080	COVER R,FENDER	1	1						
9	1	1N1291-58080	BOLT 6X16 W/P&SW.	4	4						
10	1	26367-060002	NUT, M6	4	4						
11	1	1N1995-47130	STAY,HANDLE	2	2						
12	1	1N1995-47040	STAY,HANDLE A	1	1						
13	1	1N1995-45140	PLATE	1	1						
14	1	26117-060304	BOLT M 6X 30 PLATED	2	2						
15	1	26757-060002	NUT, LOCK M6	2	2						
16	1	26051-060002	NUT, M6	2	2						

Fig.26. TRAVEL CLUTCH LEVER



(A)=MCG1200FLD
 (B)=MCG1200F-PQ
 (C)=

(D)=
 (E)=
 (F)=

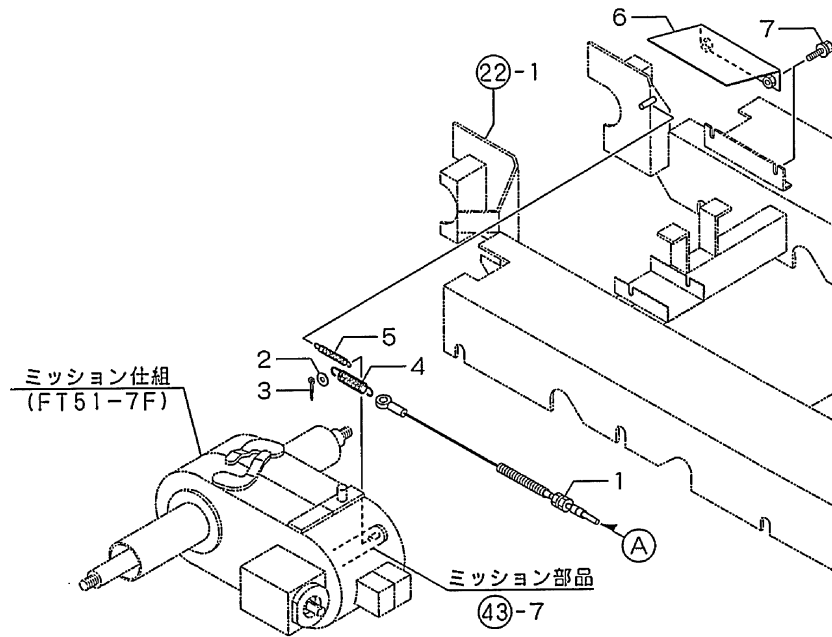
No.	Lev.	Parts No.	Description	Q'ty						I	R
				(A)	(B)	(C)	(D)	(E)	(F)		
1	1	1N1995-41240	LEVER,DEADMAN	1	1						
2	1	1N1995-41210	BRACKET,CLUTCH LEVER	1	1						
3	1	1N1291-58080	BOLT 6X16 W/P&SW.	2	2						
4	1	26367-060002	NUT, M6	2	2						
5	1	22242-000120	RING, 12	1	1						
6	1	1N3503-53020	SPRING	1	1						
7	1	1N1995-41040	SPACER	1	1						
8	1	1N1995-42000	WIRE,CONTROL	1	1						
9	1	1N3503-53010	SPRING	1	1						
10	1	22137-080000	WASHER, 8	7	7						
11	1	22417-250200	PIN, COTTER 2.5X20	1	1						

N155372

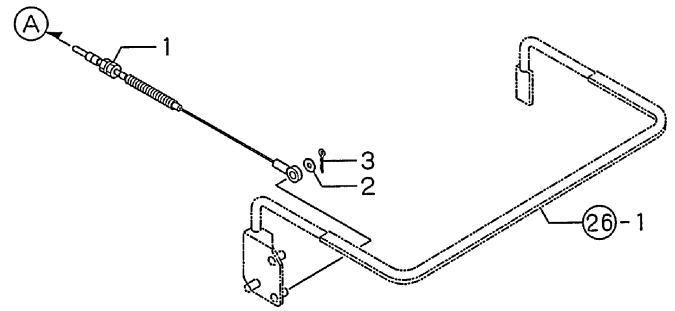
Fig.27. BRAKE LEVER

(A)=MCG1200FLD
 (B)=MCG1200F-PQ
 (C)=

(D)=
 (E)=
 (F)=

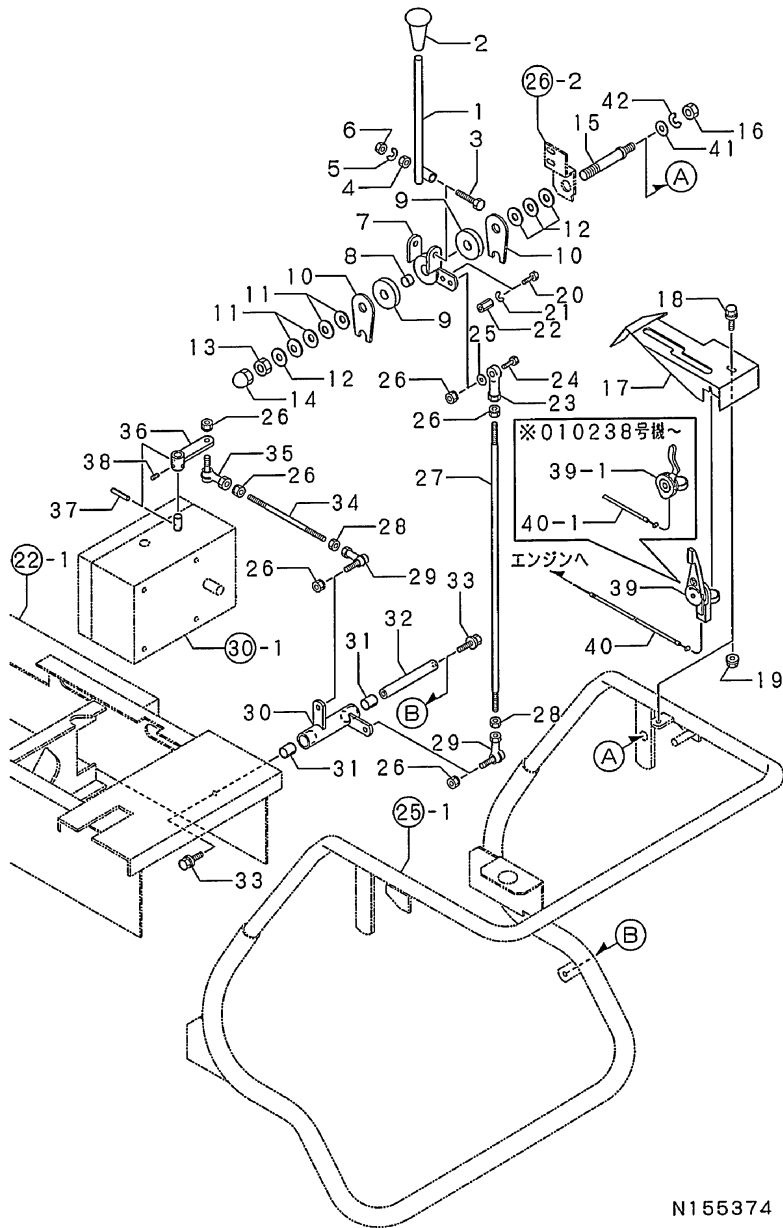


No.	Lev.	Parts No.	Description	Q'ty						I	R
				(A)	(B)	(C)	(D)	(E)	(F)		
1	1	1N1995-42010	WIRE,CONTROL	1	1						
2	1	22137-080000	WASHER, 8	1	1						
3	1	22417-250200	PIN, COTTER 2.5X20	1	1						
4	1	1N3503-53010	SPRING	1	1						
4-1	1	1N3503-53000	SPRING	1	1						S
		(A=F010238) (B=F010238)									
5	1	1N1190-45000	SPRING 11X72.5,TENS.	1	1						
6	1	1N1995-58130	BRAKE COVER	1	1						
7	1	26018-080204	BOLT M 8X 20	2	2						



N155373

Fig.28. HST LEVER



N155374

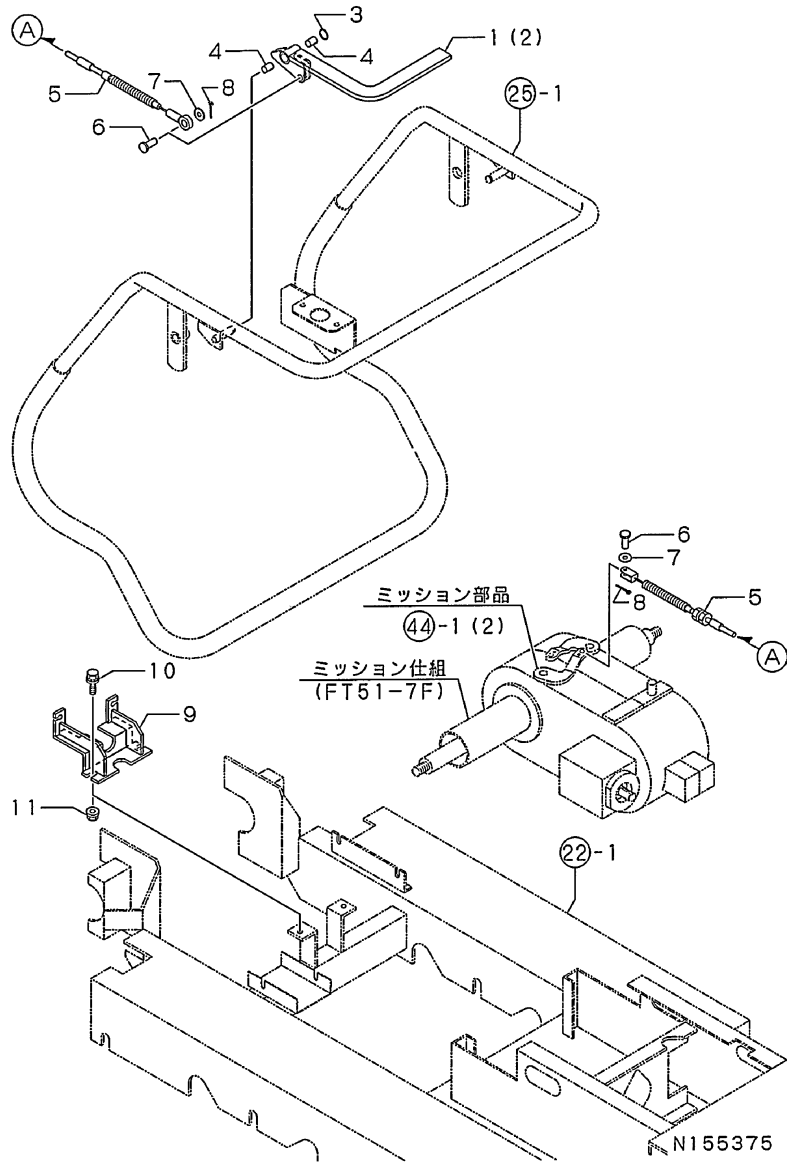
(A)=MCG1200FLD
(B)=MCG1200F-PQ
(C)=

(D)=
(E)=
(F)=

No.	Lev.	Parts No.	Description	Q'ty						I	R
				(A)	(B)	(C)	(D)	(E)	(F)		
1	1	1N1995-41190	CHANGE LEVER	1	1						
2	1	1N1101-44010	GRIP 10,CLUTCH	1	1						
3	1	26117-100702	BOLT M10X 70 PLATED	1	1						
4	1	26717-100002	NUT, M10	1	1						
5	1	22217-100000	WASHER, SPRING 10	1	1						
6	1	26757-100002	NUT, LOCK M10	1	1						
7	1	1N1995-41170	LEVER B,CHANGE	1	1						
8	1	1N3510-61190	LINER	1	1						
9	1	1N1995-41010	DISC PLATE	2	2						
10	1	1N1995-41200	PLATE	2	2						
11	1	1N1211-47180	WASHER 16,SPRING	4	4						
12	1	22137-160000	WASHER, 16	4	4						
13	1	26717-160002	NUT, M16	1	1						
14	1	26657-160002	NUT, CAP M16	1	1						
15	1	1N1995-47010	SHAFT,FULCRUM	1	1						
16	1	26757-120002	NUT, LOCK M12	1	1						
17	1	1N1995-41020	GUIDE	1	1						
18	1	1N1291-58080	BOLT 6X16 W/P&SW.	2	2						
19	1	26367-060002	NUT, M6	2	2						
20	1	26557-060162	SCREW M 6X 16	1	1						
21	1	22217-060000	WASHER, SPRING 6	1	1						
22	1	1N3514-42520	NUT M6X20	1	1						
23	1	1N1555-41350	ROD END	1	1						
24	1	26117-080304	BOLT, M8X 30 PLATED	1	1						
25	1	22137-080000	WASHER, 8	1	1						
26	1	26051-080002	NUT, M8	6	6						
27	1	1N1995-41000	ROD,ADJUSTING	1	1						
28	1	1N3506-41100	M8X6.5 LOCKNUT LEFT-	2	2						
29	1	1N3506-41180	LINK BALL L	2	2						
30	1	1N1995-41050	LINK,CHANGE	1	1						
31	1	1E1107-62000	LINER M	2	2						
32	1	1N3513-45100	SHAFT	1	1						
33	1	26018-080204	BOLT M 8X 20	2	2						
34	1	1N3513-45250	SCREW	1	1						
35	1	1N1142-45080	END 8,ROD	1	1						
36	1	1N1995-41150	LEVER A,CHANGE	1	1						
37	1	22351-050025	PIN, SPRING 5.0X25	1	1						
38	1	26979-060082	SCREW, M6X 8	1	1						
39	1	1N1993-51040	LEVER,THROTTLE	1	1						
39-1	1	1N1995-51000	THROTTLE LEVER	1	1						S
		(A=F010238) (B=F010238)									
40	1	1N3561-51070	WIRE,ACCELE	1	1						
40-1	1	1N1995-51010	WIRE,THROTTLE	1	1						S
		(A=F010238) (B=F010238)									
41	1	22137-120000	WASHER, 12	1	1						
42	1	22217-120000	WASHER, SPRING 12	1	1						

Fig.29. SIDE CLUTCH LEVER

(A)=MCG1200FLD
 (B)=MCG1200F-PQ
 (C)=
 (D)=
 (E)=
 (F)=

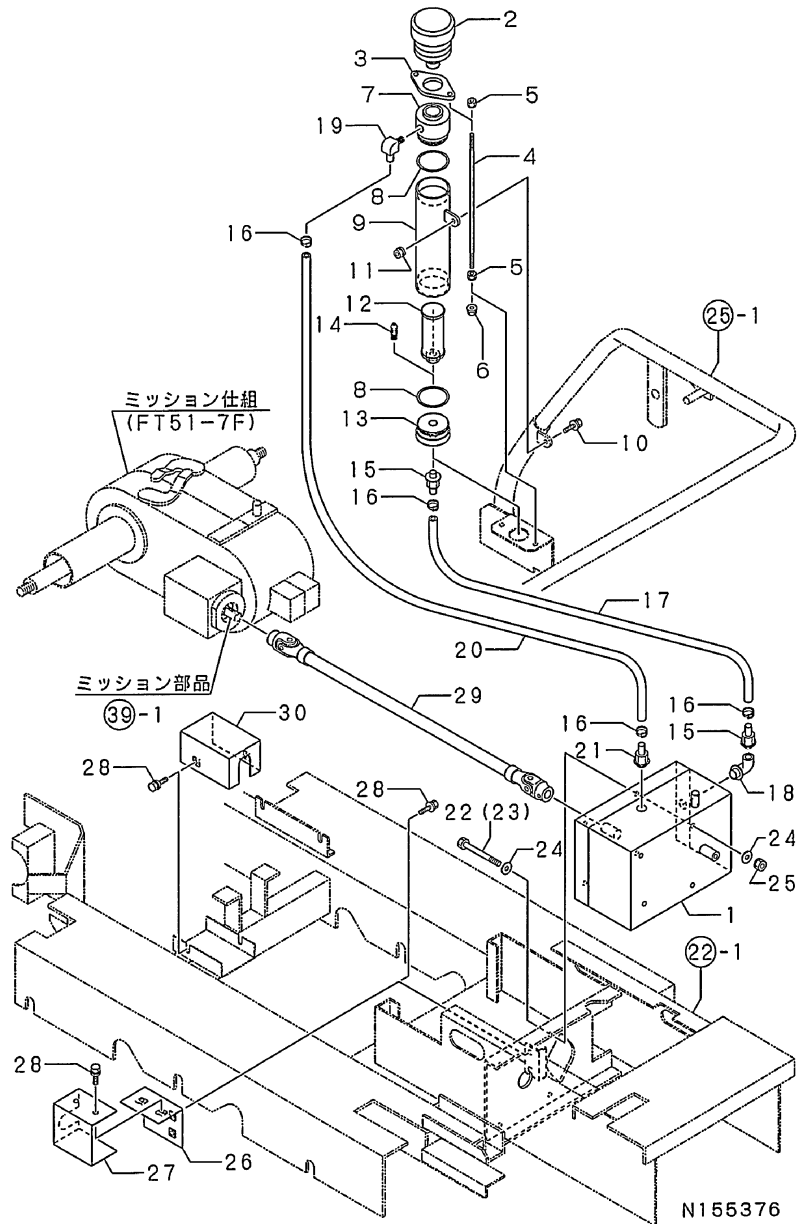


No.	Lev.	Parts No.	Description	Q'ty						I	R
				(A)	(B)	(C)	(D)	(E)	(F)		
1	1	1N1995-41080	LEVER L,SIDE CLUTCH	1	1						
2	1	1N1995-41070	SIDE CLUTCH LEVER R	1	1						
3	1	22242-000120	RING, 12	2	2						
4	1	1N1995-41440	BUSH	4	4						
5	1	1N1995-44000	SIDE CLUTCH WIRE	2	2						
6	1	1N1566-42170	RIVET	4	4						
7	1	22137-060000	WASHER, 6	4	4						
8	1	22417-250200	PIN, COTTER 2.5X20	4	4						
9	1	1N1995-41270	BRACKET, OUTER	1	1						
10	1	26018-080204	BOLT M 8X 20	2	2						
11	1	26367-080002	NUT, M8	2	2						

Fig.30. HST TANK

(A)=MCG1200FLD
 (B)=MCG1200F-PQ
 (C)=

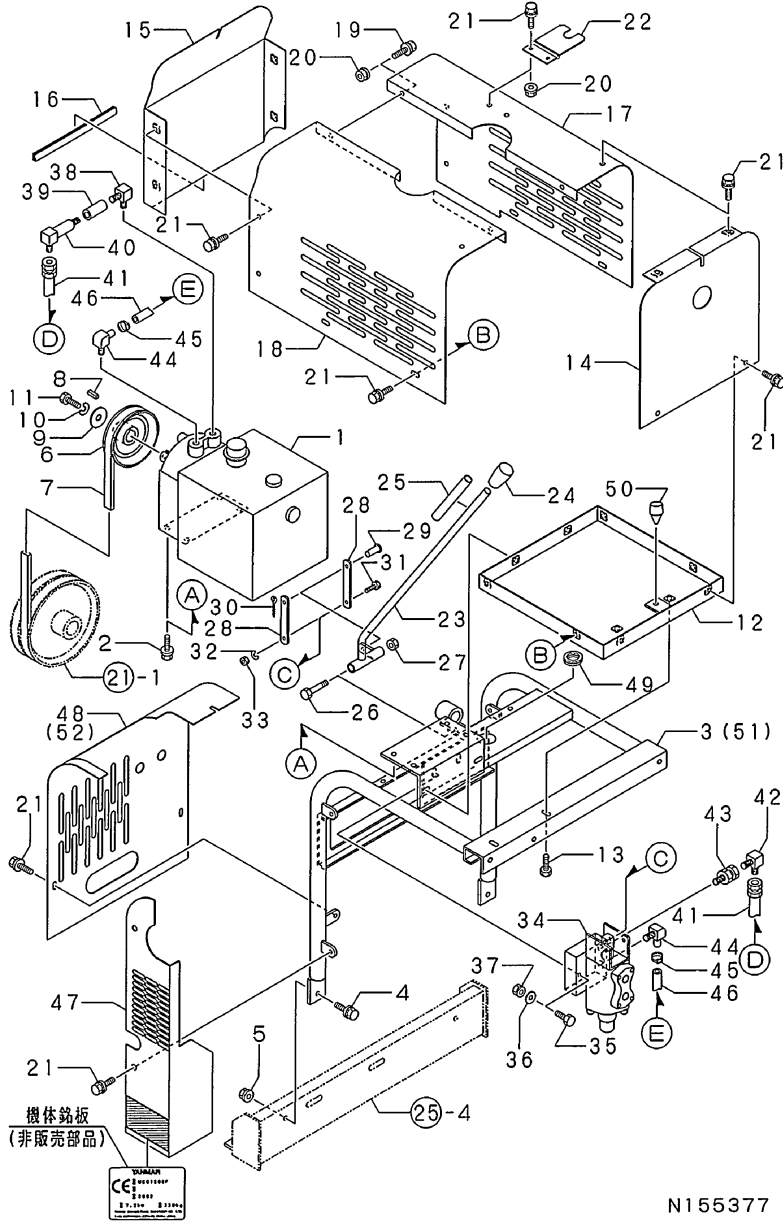
(D)=
 (E)=
 (F)=



No.	Lev.	Parts No.	Description	Qty						I	R
				(A)	(B)	(C)	(D)	(E)	(F)		
1	1	7N1995-24000	HST	1	1						
2	1	1N3506-24000	TANK	1	1						
3	1	1N1995-25050	RETAINER	1	1						
4	1	1N1995-25030	BOLT	2	2						
5	1	26051-060002	NUT, M6	4	4						
6	1	26367-060002	NUT, M6	2	2						
7	1	1N1995-25000	HEAD,OIL TANK	1	1						
8	1	1N1995-61140	O-RING 1A G-45.0	2	2						
9	1	1N1995-25040	HST TANK	1	1						
10	1	26018-080204	BOLT M 8X 20	1	1						
11	1	26367-080002	NUT, M8	1	1						
12	1	1N1995-61060	STRAINER	1	1						
13	1	1N1995-25010	HEAD,OIL TANK	1	1						
14	1	1N1995-61120	NIPPLE	1	1						
15	1	1N1995-61090	NIPPLE,HOSE	2	2						
16	1	1N3507-61150	CLAMP	4	4						
17	1	1N1995-61180	SUCTION HOSE	1	1						
18	1	1N1995-61080	ELBOW,90 ADJUSTABLE	1	1						
19	1	1N1995-61070	ELBOW	1	1						
20	1	1N1995-61160	SUCTION HOSE	1	1						
21	1	1N3507-61080	JOINT D	1	1						
22	1	26116-081302	BOLT, M8X130 PLATED	2	2						
23	1	26117-080452	BOLT M 8X 45	2	2						
24	1	22137-080000	WASHER, 8	8	8						
25	1	26051-080002	NUT, M8	4	4						
26	1	1N1995-58090	COVER	1	1						
27	1	1N1995-58000	COVER	1	1						
28	1	26018-060164	BOLT M 6X 16	6	6						
29	1	1N1995-23000	SHAFT,PROPELLER	1	1						
30	1	1N1995-58110	COVER	1	1						

NPC-4430	1. シリンダ, クランクケース	N156939
TE059M-AB53	1. 05/03 2. 3.	PLUS

Fig.31. HYDRAULIC PUMP



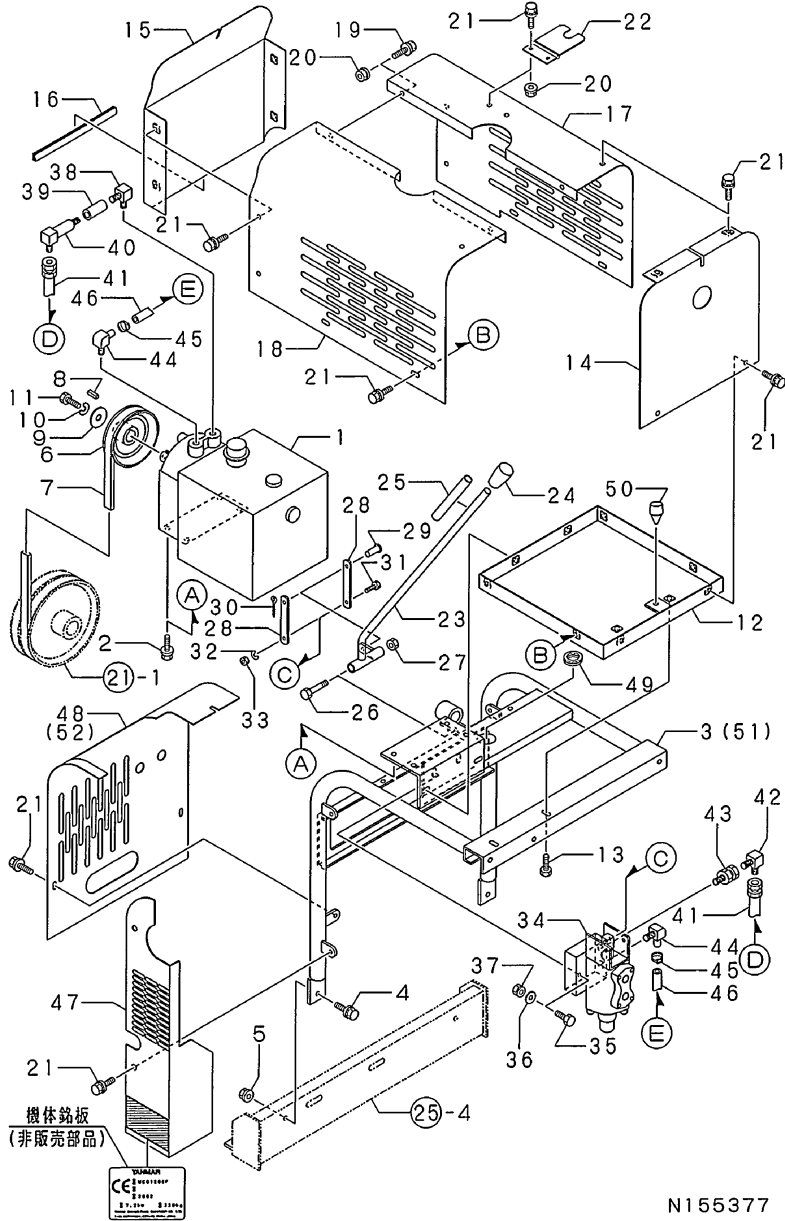
N155377

(A)=MCG1200FLD
(B)=MCG1200F-PQ
(C)=

(D)=
(E)=
(F)=

No.	Lev.	Parts No.	Description	Q'ty						I	R
				(A)	(B)	(C)	(D)	(E)	(F)		
1	1	7N1995-61000	HYDRAULIC PUMP	1							
2	1	26018-080204	BOLT M 8X 20	4							
3	1	1N1995-45060	PLATFORM,PACKAGE	1							
4	1	26018-100254	BOLT M10X 25	2	2						
5	1	26367-100002	NUT, M10	2	2						
6	1	1N1995-21010	PULLEY	1							
7	1	25123-005401	V-BELT, B54H	1							
8	1	22550-050150	KEY 5X15	1							
9	1	1N1210-16060	WASHER 11X35,RUBBER	1							
10	1	22217-100000	WASHER, SPRING 10	1							
11	1	26117-100164	BOLT M10X 16 PLATED	1							
12	1	1N1995-45150	SUMP, OIL	1							
13	1	1E1115-58300	BOLT 6X20	2							
14	1	1N1995-58180	TANK COVER	1							
15	1	1N1995-58200	TANK COVER	1							
16	1	1N1995-58330	TRIM	1							
17	1	1N1995-58220	COVER R, TANK	1							
18	1	1N1995-58230	COVER L,TANK	1							
19	1	26018-060164	BOLT M 6X 16	2							
20	1	26367-060002	NUT, M6	4							
21	1	1N1291-58080	BOLT 6X16 W/P&SW.	20	6						
22	1	1N1995-45030	PLATE	1							
23	1	1N1995-45000	LEVER, DUMP	1							
24	1	1N1101-44020	GRIP 10,BRAKE	1							
25	1	1N1995-45180	VINYL HOSE	1							
26	1	26117-100804	BOLT, M10X 80 PLATED	1							
27	1	26347-100002	NUT, M10	1							
28	1	1N1995-45050	LINK,DUMP LEVER	2							
29	1	1N1215-51000	PIN 6X16,RIVET	1							
30	1	22417-250200	PIN, COTTER 2.5X20	1							
31	1	26117-050204	BOLT M 5X 20 PLATED	1							
32	1	22217-050000	WASHER, SPRING 5	1							
33	1	26717-050002	NUT, M5	1							
34	1	7N1995-61010	VALVE	1							
35	1	26116-060352	BOLT, M6X 35 PLATED	2							
36	1	22137-060000	WASHER, 6	2							
37	1	26051-060002	NUT, M6	2							
38	1	1N1995-61100	ELBOW	1							
39	1	1N1995-61110	SOCKET	1							
40	1	1N3512-61040	ELBOW, LONG	1							
41	1	1N1995-61050	HOSE H2-800,HYDRAUL.	1							
42	1	1N3516-45210	ELBOW	1							
43	1	1E1107-61260	ADAPTER	1							
44	1	1N1995-61070	ELBOW	2							
45	1	1N1995-61130	HOSE BAND	2							
46	1	1N1995-61150	SUCTION HOSE	1							
47	1	1N1995-58150	SIDE COVER	1	1						
47-1	1	1N1995-58410		1	1						N
				(A=F010238)		(B=F010238)					
48	1	1N1995-58160	FRONT COVER	1							
49	1	1N1185-53010	GROMMET 35	1							

Fig.31. HYDRAULIC PUMP

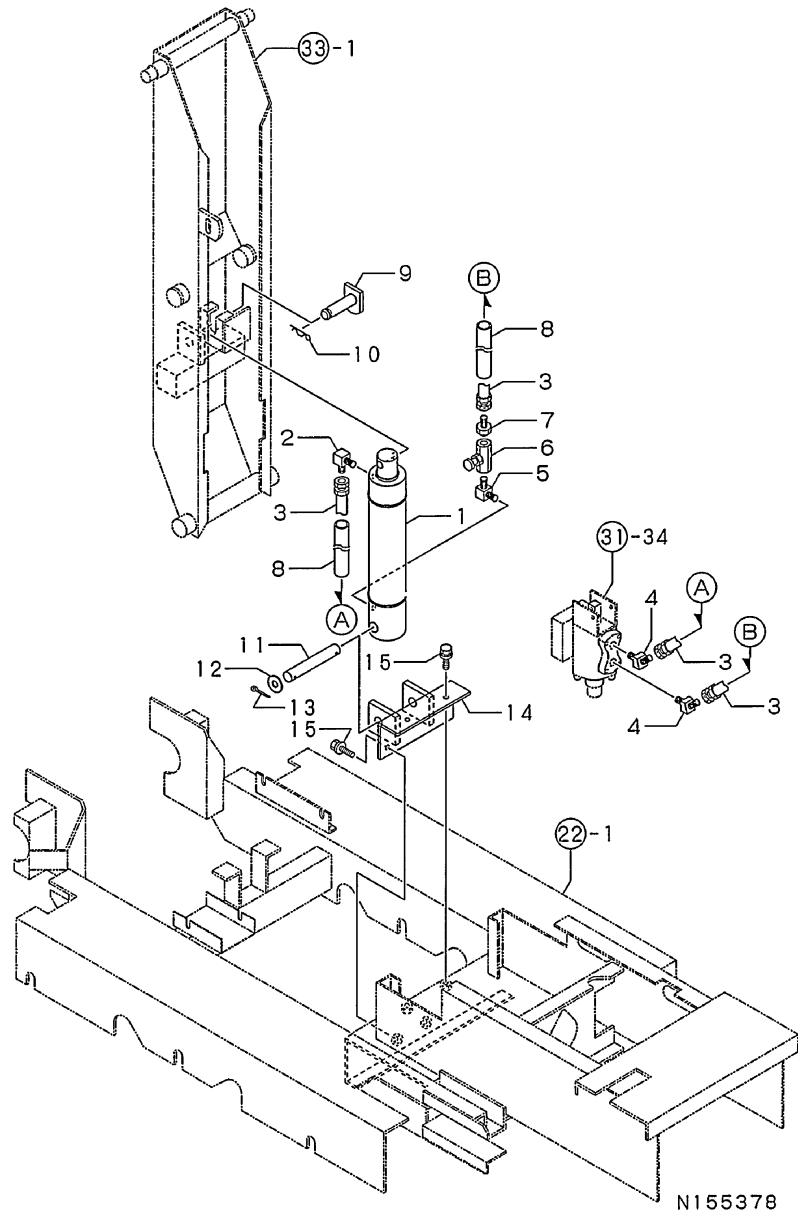


N155377

(A)=MCG1200FLD (D)=
(B)=MCG1200F-PQ (E)=
(C)= (F)=

No.	Lev.	Parts No.	Description	Q'ty						I	R
				(A)	(B)	(C)	(D)	(E)	(F)		
50	1	1N1101-44040	RUBBER,STOPPER	1							
51	1	1N1995-45210	MOUNT,COVER		1						
52	1	1N1995-58350	FRONT COVER		1						

Fig.32. HYDRAULIC CYLINDER



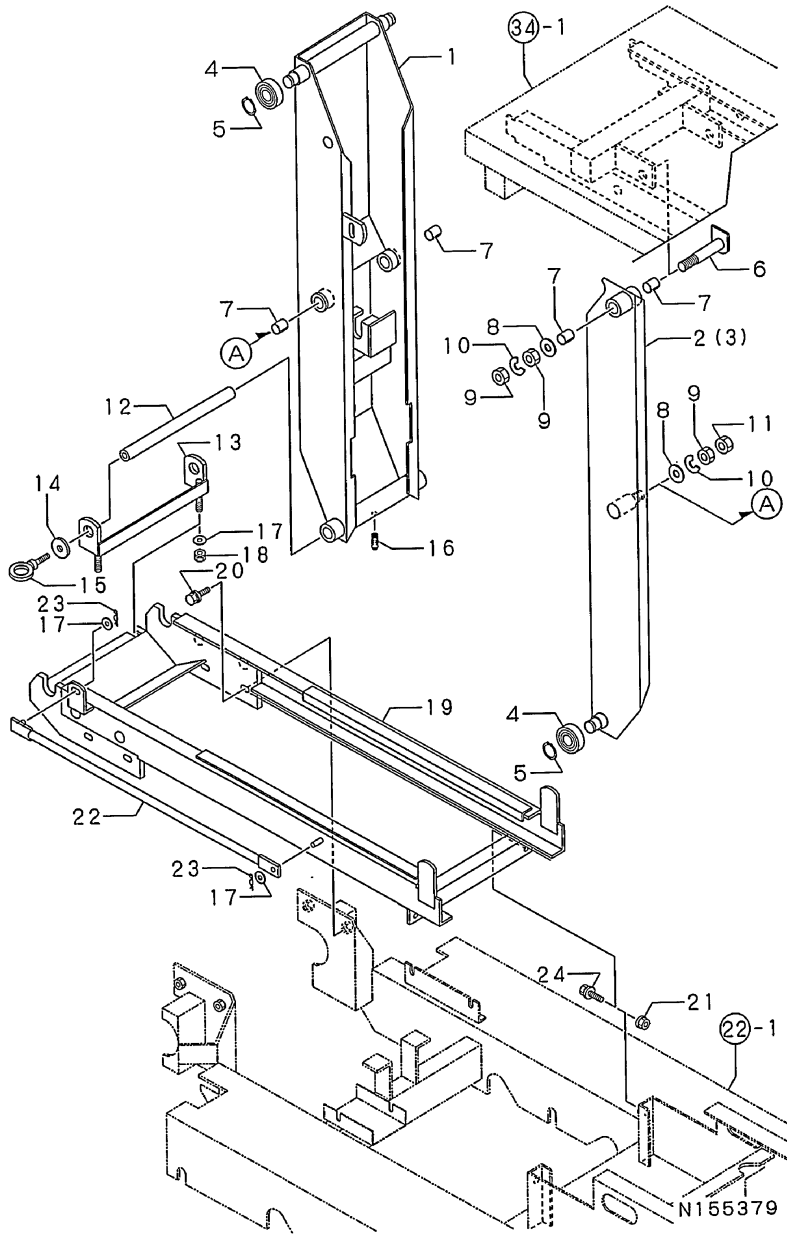
(A)=MCG1200FLD
 (B)=MCG1200F-PQ
 (C)=
 (D)=
 (E)=
 (F)=

No.	Lev.	Parts No.	Description	Q'ty						
				(A)	(B)	(C)	(D)	(E)	(F)	
1	1	1N1995-61000	CYLINDER	1						
2	1	1N1090-61030	ELBOW	1						
3	1	1N1995-61040	HOSE	2						
4	1	1E1101-61040	ELBOW 4	2						
5	1	1N1995-61100	ELBOW	1						
6	1	1N3512-61020	VALVE,THRITTLE	1						
7	1	1E1107-61250	ADAPTER	1						
8	1	1N1995-61170	VINYL HOSE	2						
9	1	1N1995-68480	PIN,CYLINDER	1						
10	1	22360-180000	PIN, SNAP 18	1						
11	1	1N3544-61020	PIN	1						
12	1	22137-180000	WASHER, 18	2						
13	1	22417-400400	PIN, COTTER 4.0X40	2						
14	1	1N1995-68260	BRACKET	1						
15	1	26018-100254	BOLT M10X 25	4						

Fig.33. PANTAGRAPH

(A)=MCG1200FLD
 (B)=MCG1200F-PQ
 (C)=

(D)=
 (E)=
 (F)=

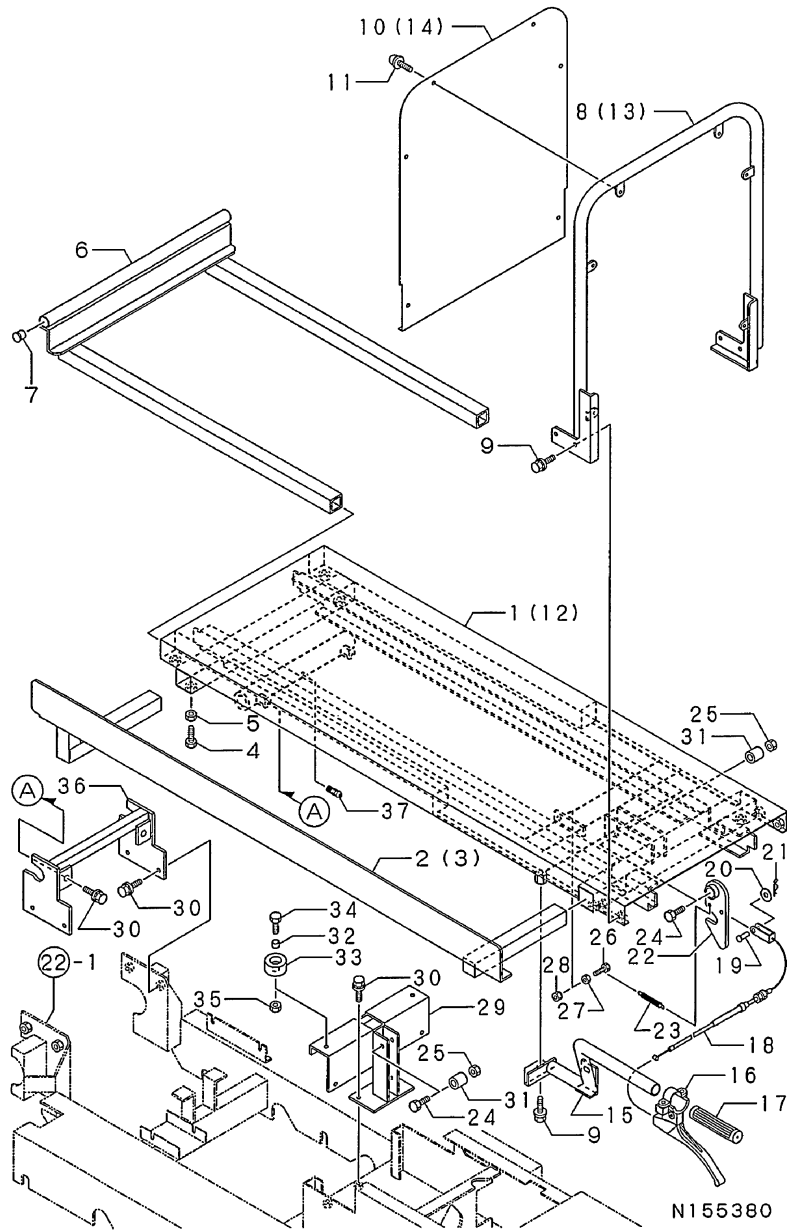


No.	Lev.	Parts No.	Description	Q'ty						I	R
				(A)	(B)	(C)	(D)	(E)	(F)		
1	1	1N1995-68200	ARM	1							
2	1	1N1995-68160	ARM	1							
3	1	1N1995-68180	ARM	1							
4	1	24104-060044	BEARING, BALL 6004UU	4							
5	1	22242-000200	RING, 20	4							
6	1	1N1995-68460	SHAFT,ARM	2							
7	1	1N1995-68560	BUSH	6							
8	1	22137-160000	WASHER, 16	4							
8-1	1	1N1211-47110	WASHER 16.5X45X4.5	4							N
(A=F010238)											
9	1	26717-160002	NUT, M16	6							
10	1	22217-160000	WASHER, SPRING 16	4							
11	1	26757-160002	NUT, LOCK M16	2							
12	1	1N1995-68000	ARM SHAFT	1							
13	1	1N1995-68290	HINGE	1							
14	1	1N1210-16060	WASHER 11X35,RUBBER	2							
15	1	1N1995-31280	BOLT M10	2							
16	1	24761-060000	NIPPLE, GREASE MT6X1	1							
17	1	22137-100000	WASHER, 10	4							
18	1	26051-100002	NUT, M10	2							
19	1	1N1995-68070	LIFT RAIL	1							
20	1	1N1286-47110	BOLT 8X30	4							
21	1	26367-100002	NUT, M10	2							
22	1	1N1995-68440	STAY	1							
23	1	22360-100000	PIN, SNAP 10	2							
24	1	26018-100254	BOLT M10X 25	2							

Fig.34. PLATFORM CARRIER

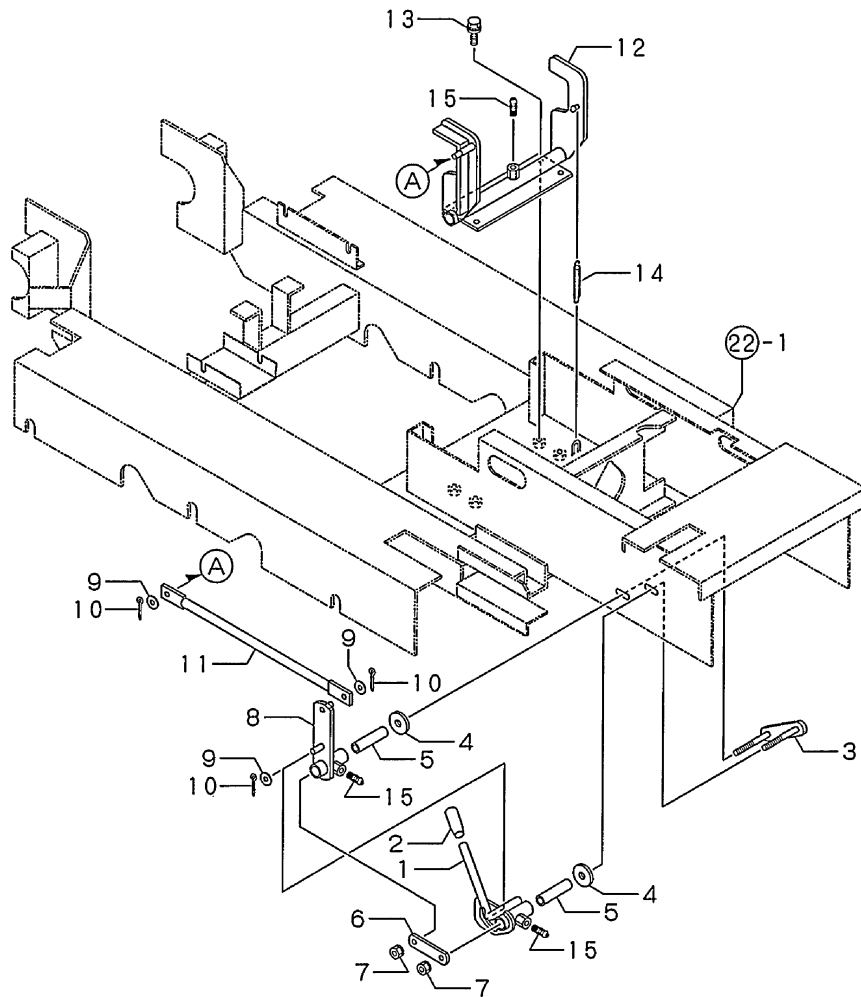
(A)=MCG1200FLD
 (B)=MCG1200F-PQ
 (C)=

(D)=
 (E)=
 (F)=



No.	Lev.	Parts No.	Description	Qty						I	R
				(A)	(B)	(C)	(D)	(E)	(F)		
1	1	1N1995-64000	CARRIER,PLATFORM	1							
2	1	1N1995-65000	PLATE L,SIDE	1	1						
3	1	1N1995-65010	PLATE R,SIDE	1	1						
4	1	26117-100254	BOLT, M10X 25 PLATED	6	6						
5	1	26757-100002	NUT, LOCK M10	6	6						
6	1	1N1995-66000	PLATE	1	1						
7	1	1N3513-58230	PLUG	2	2						
8	1	1N1995-66040	GUIDE PIPE	1							
9	1	26018-100252	BOLT, M10X 25	4	5						
10	1	1N1995-66080	PLATE,BACK	1							
11	1	1N3503-66220	SCREW 6X12	6	4						
12	1	1N1995-64120	CARRIER,PLATFORM		1						
13	1	1N1995-66090	GUIDE PIPE		1						
14	1	1N1995-66100	PLATE BACK		1						
15	1	1N1995-64220	LEVER, DUMP		1						
16	1	1N3545-45240	LEVER		1						
17	1	1N1313-44000	GRIP A 25.4		1						
18	1	1N3545-51030	WIRE,CARRIER LOCK		1						
19	1	1N1215-51000	PIN 6X16,RIVET		1						
20	1	22137-060000	WASHER, 6		1						
21	1	1N3513-42160	PIN		1						
22	1	1N3545-45210	LOCK PLATE		1						
23	1	1N1190-45000	SPRING 11X72.5,TENS.		1						
24	1	26116-100402	BOLT, M10X 40 PLATED		2						
25	1	26347-100002	NUT, M10		2						
26	1	26117-060354	BOLT M 6X 35 PLATED		1						
27	1	26757-060002	NUT, LOCK M6		1						
28	1	26051-060002	NUT, M6		1						
29	1	1N1995-68620	BRACKET,LOCK		1						
30	1	26018-100254	BOLT M10X 25		10						
31	1	1N1995-68660	PIPE		2						
32	1	1N3503-64420	COLLAR 8.8X12X8		2						
33	1	1N3503-44000	RUBBER,STOPPER		2						
34	1	26117-080204	BOLT M 8X 20 PLATED		2						
35	1	26051-080002	NUT, M8		2						
36	1	1N1995-68570	BRACKET		1						
37	1	24761-060000	NIPPLE, GREASE MT6X1		1						

Fig.35. DUMP CHANGE LEVER



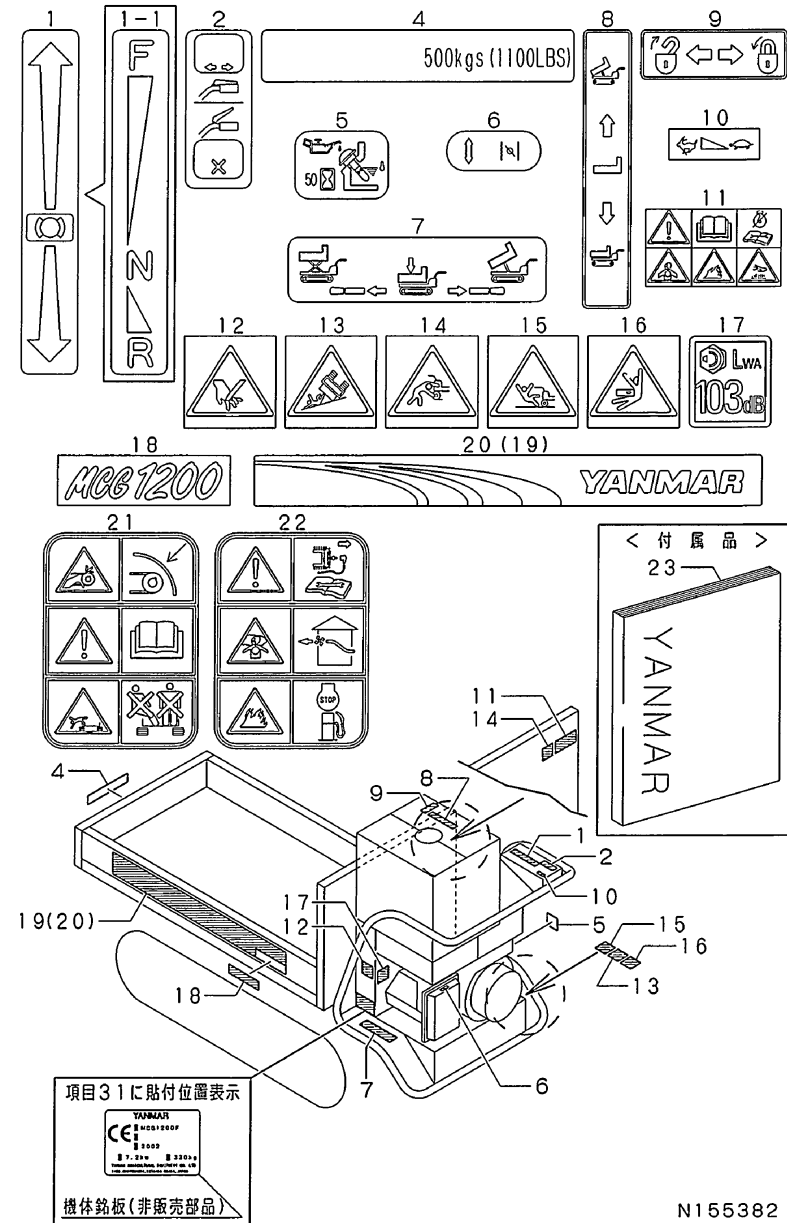
N155381

(A)=MCG1200FLD
(B)=MCG1200F-PQ
(C)=

(D)=
(E)=
(F)=

No.	Lev.	Parts No.	Description	Q'ty						I	R
				(A)	(B)	(C)	(D)	(E)	(F)		
1	1	1N1995-68350	LEVER	1							
1-1	1	1N1995-68351	LEVER,A DUMP CHANGEO	1							N
(A=F010238)											
2	1	1N1101-44020	GRIP 10,BRAKE	1							
3	1	1N1995-68400	STUD, STARTER	1							
4	1	1N1210-16060	WASHER 11X35,RUBBER	2							
5	1	1N1300-65240	CAM LEVER	2							
6	1	1N1995-68550	RETAINER	1							
7	1	26051-100002	NUT, M10	2							
8	1	1N1995-68380	LEVER	1							
8-1	1	1N1995-68381	LEVER,B DUMP CHANGEO	1							N
(A=F010238)											
9	1	22137-080000	WASHER, 8	3							
10	1	22417-250200	PIN, COTTER 2.5X20	3							
11	1	1N1995-68430	ROD	1							
12	1	1N1995-68320	LINK,DUMP CHANGEOVER	1							
12-1	1	1N1995-68321	LINK,DUMP CHANGEOVER	1							N
(A=F010238)											
13	1	26018-100254	BOLT M10X 25	4							
14	1	1N1190-45000	SPRING 11X72.5,TENS.	1							
15	1	24761-060000	NIPPLE, GREASE MT6X1	3							W
(A=F010238)											

Fig.36. LABELS



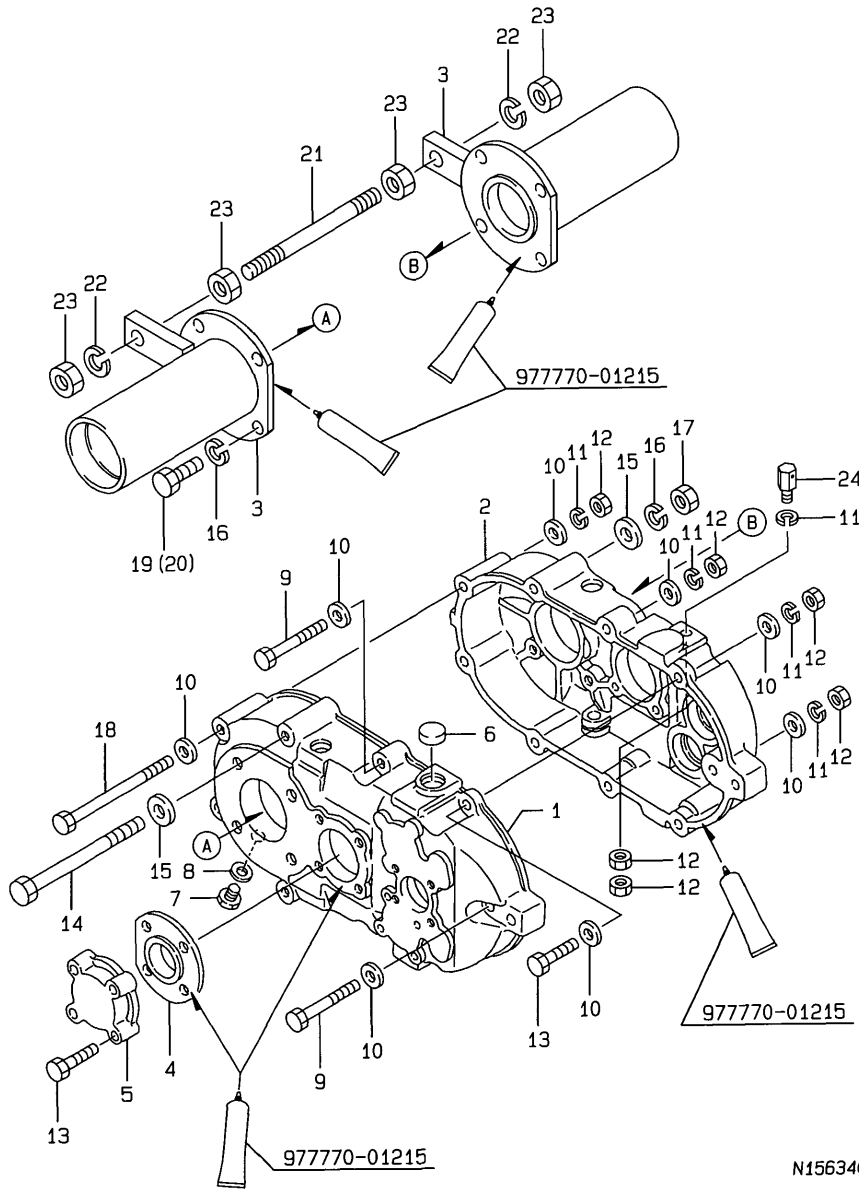
N155382

(A)=MCG1200FLD
(B)=MCG1200F-PQ
(C)=

(D)=
(E)=
(F)=

No.	Lev.	Parts No.	Description	Q'ty						I	R
				(A)	(B)	(C)	(D)	(E)	(F)		
1	1	1N3506-93210	LABEL	1	1						
1-1	1	1N1995-93030	LABEL,CONTROL LEVER	1	1						N
		(A=F010098) (B=F010098)									
2	1	1N3506-93260	LABEL,CLUTCH	1	1						
4	1	1N3506-93320	PLATE 500K,LOADAGE	1	1						
5	1	1N3507-93160	LEVEL,OIL	1	1						
6	1	1N1367-93100	LABEL	1	1						
7	1	1N3505-93290	LABEL,DUMP SWITCHING	1							
7-1	1	1N3505-93310	LABEL,PLATFORM CARR.	1							N
		(A=FXXXXXXX)									
8	1	1N3503-93140	LABEL,SWITCHING	1							
9	1	1N3503-93150	LABEL,HYDRAULIC LOCK	1							
10	1	1N3503-93190	LABEL,ACCEL	1	1						
11	1	1N3544-93360	LABEL	1	1						Z
		(A=F010311) (B=F010311)									
12	1	1N3544-93310	LABEL	1	1						Z
		(A=F010311) (B=F010311)									
13	1	1N3544-93320	LABEL	1	1						Z
		(A=F010311) (B=F010311)									
14	1	1N3544-93330	LABEL	1	1						Z
		(A=F010311) (B=F010311)									
15	1	1N3544-93340	LABEL	1	1						Z
		(A=F010311) (B=F010311)									
16	1	1N3544-93350	LABEL	1	1						Z
		(A=F010311) (B=F010311)									
17	1	1N1995-93050	LABEL	1	1						
18	1	1N3542-93060	STRIPE	2	2						
19	1	1N3542-93070	STRIPE L,SIDE	1	1						Z
		(A=F010403) (B=F010403)									
20	1	1N3542-93080	LABEL, SIDE(R)	1	1						
20-1	1	1N3542-93080	LABEL, SIDE(R)	2	2						K
		(A=F010403) (B=F010403)									
21	1	1N3563-93020	LABEL,SAFETY	1	1						W
		(A=F010311) (B=F010311)									
22	1	1N3563-93050	LABEL,SAFETY	1	1						W
		(A=F010311) (B=F010311)									
23	1	1N1995-95101	INSTRUCTION BOOK	1	1						

Fig.37. TRANSMISSION CASE



(A)=FT51-7F

(B)=

(C)=

(D)=

(E)=

(F)=

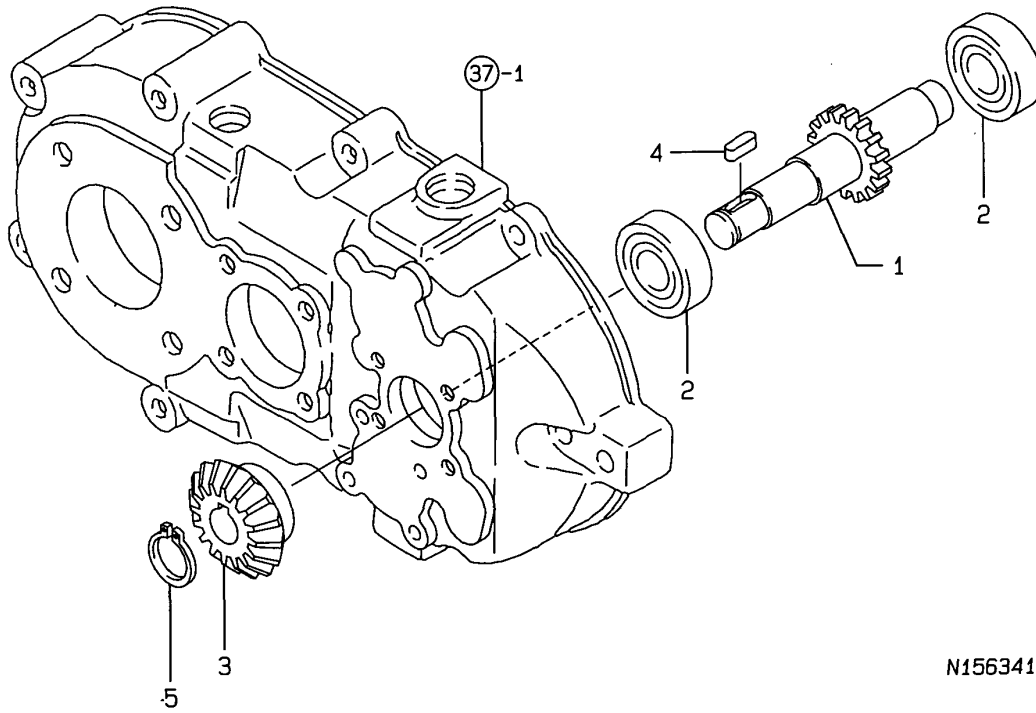
No.	Lev.	Parts No.	Description	Q'ty						I	R
				(A)	(B)	(C)	(D)	(E)	(F)		
1	1	1N1995-24000	CASE L,TRANSMISSION	1							
2	1	1N1995-24010	CASE R,TRANSMISSION	1							
3	1	1N1995-24020	HOLDER,AXLE	2							
4	1	1N1360-25010	METAL,CLUTCH PAWL	2							
5	1	1N1360-24030	COVER,BEARING	2							
6	1	1N3545-24020	PLUG,OIL	1							
7	1	1N1361-24010	PLUG,OIL DRAIN	1							
8	1	1N1361-24020	WASHER 14,SEAL	1							
9	1	26117-080602	BOLT M 8X 60 PLATED	3							
10	1	22137-080000	WASHER, 8	30							
11	1	22217-080000	WASHER, SPRING 8	16							
12	1	26717-080002	NUT, M8	9							
13	1	26117-080352	BOLT M 8X 35 PLATED	10							
14	1	26117-101202	BOLT M10X120 PLATED	2							
15	1	22137-100000	WASHER, 10	4							
16	1	22217-100000	WASHER, SPRING 10	10							
17	1	26717-100002	NUT, M10	2							
18	1	26117-081102	BOLT M 8X110 PLATED	2							
19	1	26117-100254	BOLT, M10X 25 PLATED	6							
20	1	26117-100354	BOLT M10X 35 PLATED	2							
21	1	1N1150-24170	STUD 12X180	1							
22	1	22217-120000	WASHER, SPRING 12	2							
23	1	26717-120002	NUT, M12	4							
24	1	1N1995-24030	VALVE,BREATHER	1							

Remarks

* 7N1995-20000 TRANSMISSION ASSY.

N:Old $\xrightarrow{\text{Yes}}$ New, Q:Old $\xrightarrow{\text{No}}$ New, R:Old $\xrightarrow{\text{Yes}}$ New, S:Old $\xrightarrow{\text{No}}$ New, W:Add, Z:Discontinued, F:Interchangeable by set, K:Q'ty Change

Fig.38. MAIN SHAFT



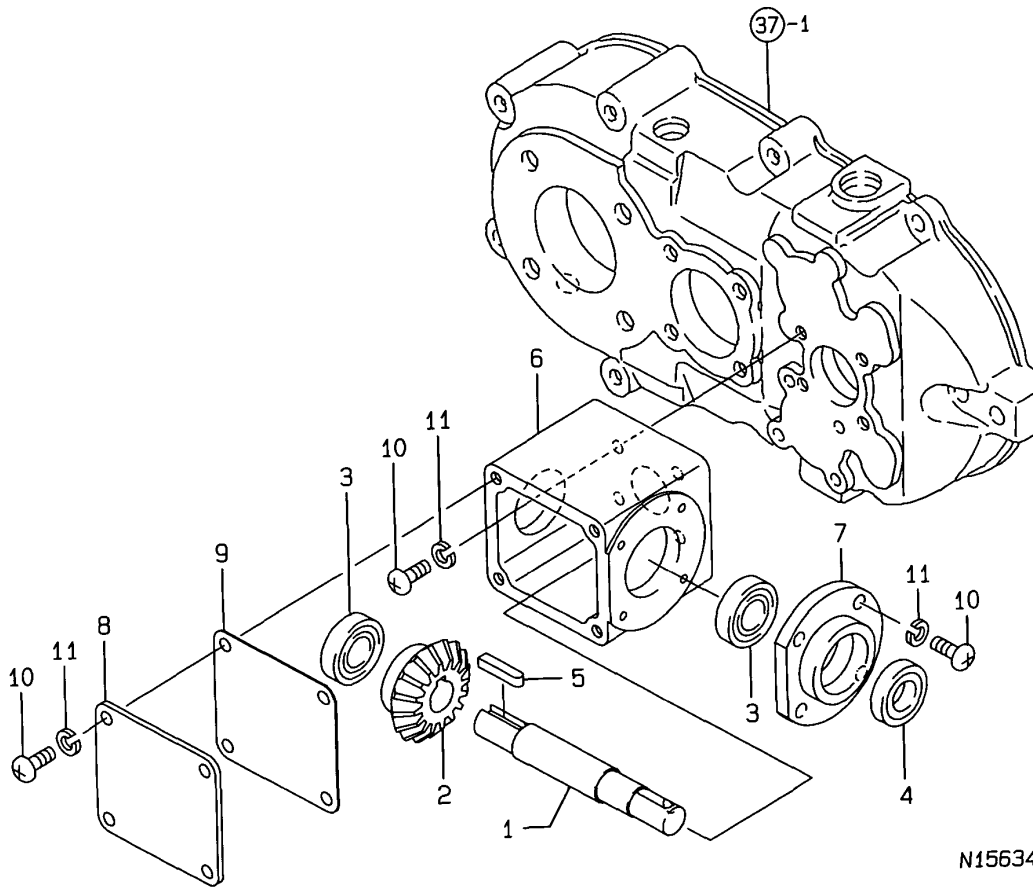
N156341

(A)=FT51-7F
(B)=
(C)=

(D)=
(E)=
(F)=

No.	Lev.	Parts No.	Description	Q'ty						I	R
				(A)	(B)	(C)	(D)	(E)	(F)		
1	1	1N1995-25060	INPUT GEAR	1							
2	1	24101-060034	BEARING, BALL 6003	2							
3	1	1N1995-25070	BEVEL GEAR	1							
4	1	1N1995-25080	KEY	1							
5	1	22242-000150	RING, 15	1							

Fig.39. BEVEL SHAFT



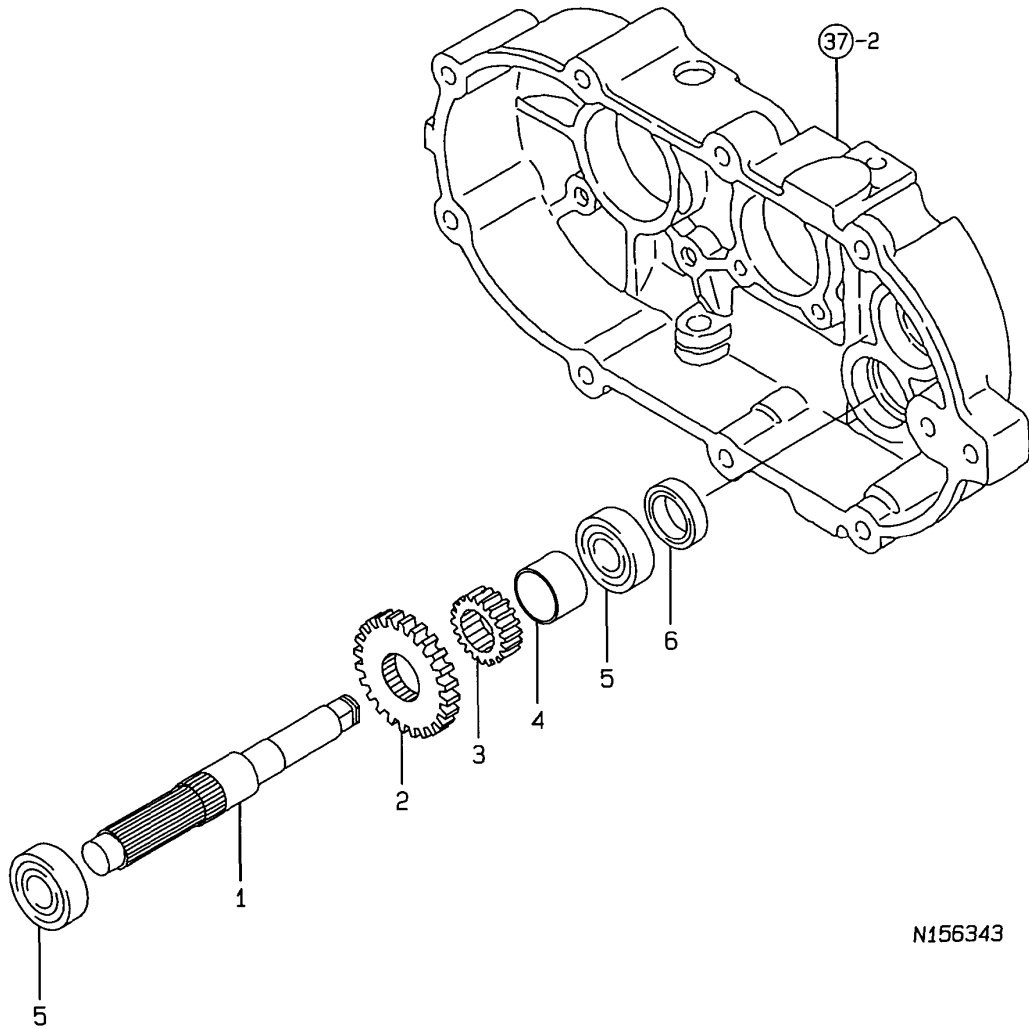
N15634

(A)=FT51-7F
(B)=
(C)=

(D)=
(E)=
(F)=

No.	Lev.	Parts No.	Description	Q'ty						I	R
				(A)	(B)	(C)	(D)	(E)	(F)		
1	1	1N1995-25090	SHAFT,INPUT BEVEL	1							
2	1	1N1995-25070	BEVEL GEAR	1							
3	1	24101-060024	BEARING, BALL 6002	2							
4	1	24421-153007	SEAL TC15 30 07, OIL	1							
5	1	22550-050251	KEY, 5X 25	1							
6	1	1N1995-25100	BEVEL CASE	1							
7	1	1N1995-25110	COVER	1							
8	1	1N1995-25120	COVER, SIDE	1							
9	1	1N1995-25130	GASKET	1							
10	1	26557-060162	SCREW M 6X 16	12							
11	1	22217-060000	WASHER, SPRING 6	12							

Fig.40. TRANSMISSION SHAFT B

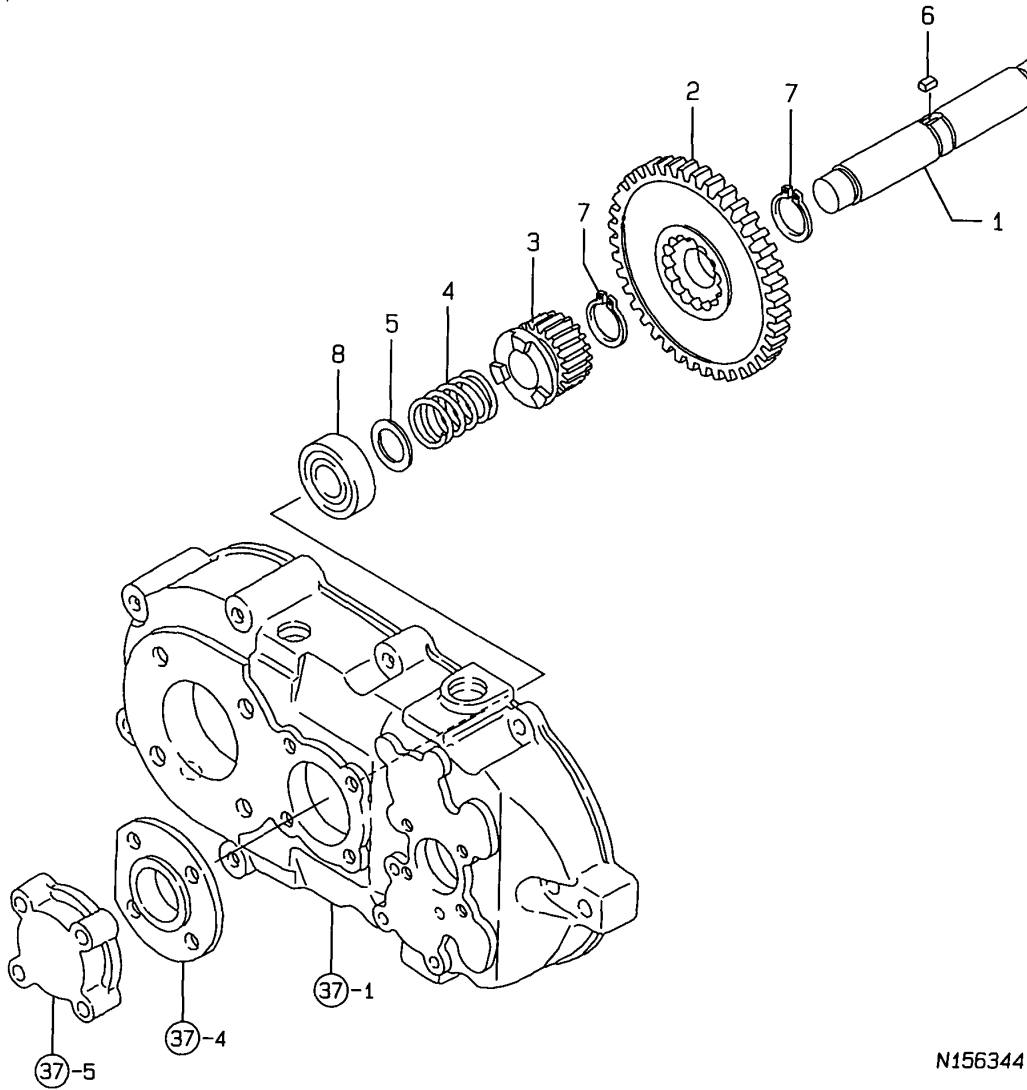


(A)=FT51-7F
(B)=
(C)=

(D)=
(E)=
(F)=

No.	Lev.	Parts No.	Description	Q'ty						I	R
				(A)	(B)	(C)	(D)	(E)	(F)		
1	1	1N3521-25020	SHAFT,BRAKE	1							
2	1	1N1995-25140	TOP GEAR	1							
3	1	1N3521-25040	GEAR	1							
4	1	1N1995-25150	COLLAR	1							
5	1	24101-060034	BEARING, BALL 6003	2							
6	1	24421-173007	SEAL, OIL TC173007	1							

Fig.41. SIDE CLUTCH SHAFT



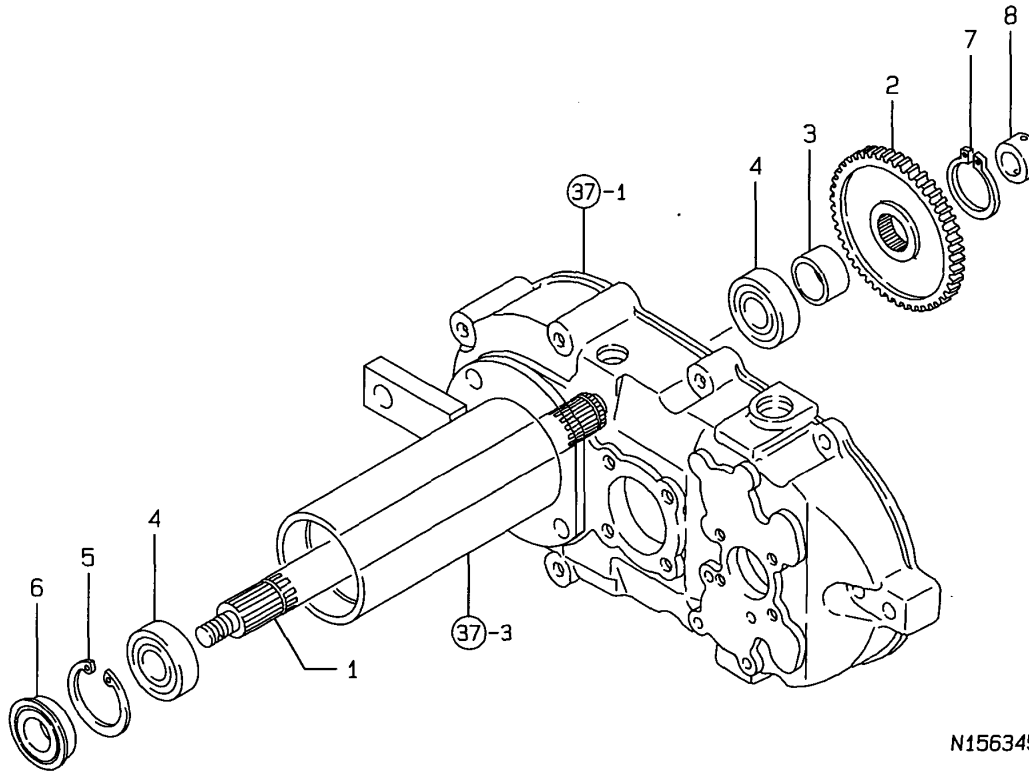
N156344

(A)=FT51-7F
(B)=
(C)=

(D)=
(E)=
(F)=

No.	Lev.	Parts No.	Description	Q'ty						I	R
				(A)	(B)	(C)	(D)	(E)	(F)		
1	1	1N1360-25031	SHAFT,CLUTCH	1							
2	1	1N3521-25110	GEAR 61T, CLUTCH	1							
3	1	1N1360-25022	GEAR,SIDE CLUTCH	2							
4	1	1N1360-25001	SPRING,SIDE CLUTCH	2							
5	1	1N1350-25010	COLLAR,CLUTCH SHAFT	2							
6	1	22550-050100	KEY 5X10	1							
7	1	22242-000220	RING, 22	2							
8	1	24101-060044	BEARING, BALL 6004	2							

Fig.42. AXLE



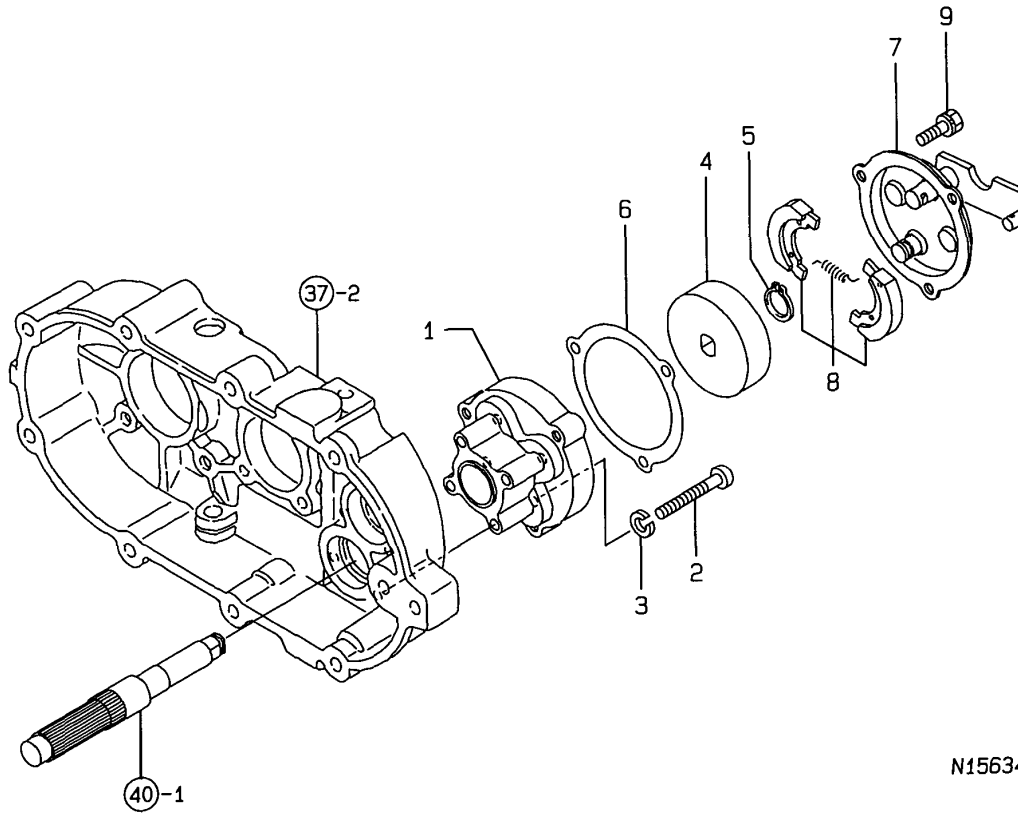
N15634!

(A)=FT51-7F
(B)=
(C)=

(D)=
(E)=
(F)=

No.	Lev.	Parts No.	Description	Q'ty						I	R
				(A)	(B)	(C)	(D)	(E)	(F)		
1	1	1N1995-25160	SHAFT	2							
2	1	1N1350-25111	GEAR,AXLE	2							
3	1	1N1350-25120	COLLAR,AXLE	2							
4	1	24101-060064	BEARING, BALL 6006	4							
5	1	22252-000550	RING, 55	2							
6	1	1N3505-25000	SEAL MUD-5 305518	2							
7	1	22242-000300	RING, 30	2							
8	1	1N1361-25040	COLLAR A,AXLE	1							

Fig.43. BRAKE



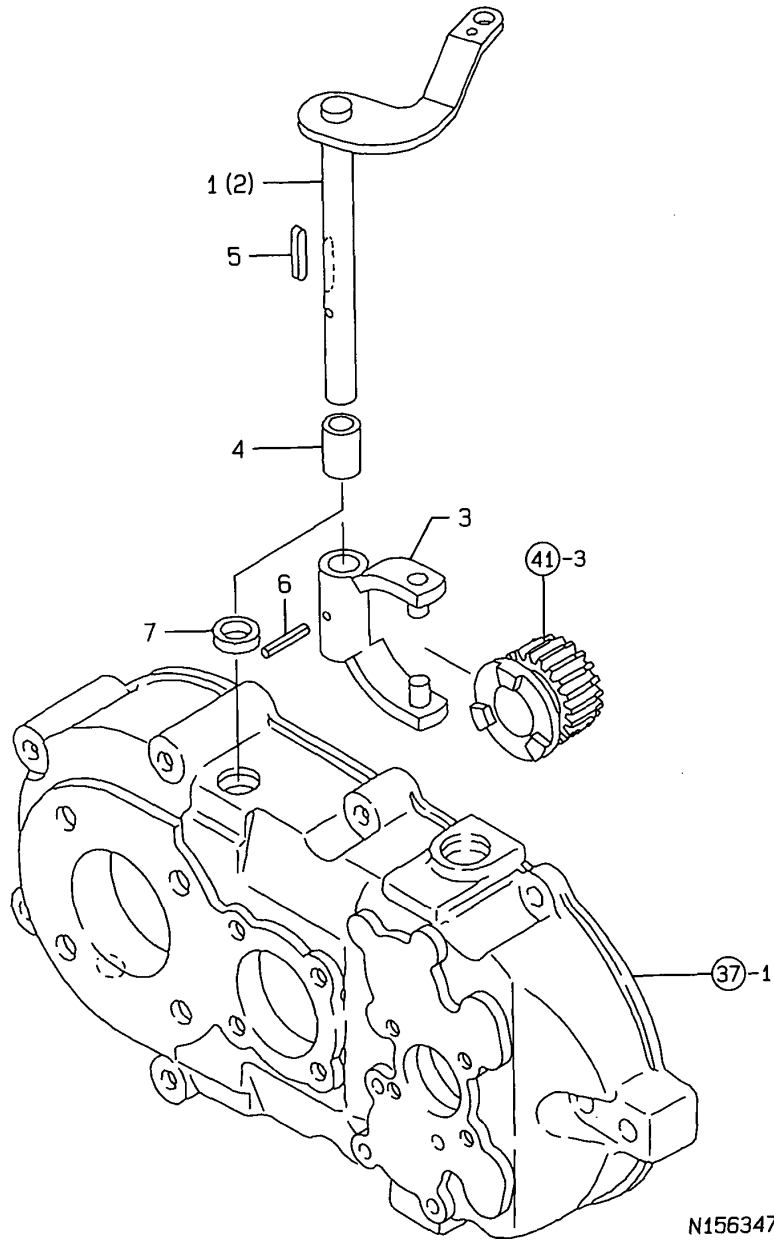
N1563

(A)=FT51-7F
(B)=
(C)=

(D)=
(E)=
(F)=

No.	Lev.	Parts No.	Description	Q'ty						I	R
				(A)	(B)	(C)	(D)	(E)	(F)		
1	1	1N3521-25080	MOUNT,BRAKE	1							
2	1	26557-060452	SCREW, M6X45	4							
3	1	22217-060000	WASHER, SPRING 6	4							
4	1	1N3503-25230	DRUM, BREAK	1							
5	1	22242-000140	RING, 14	1							
6	1	1N1291-25230	PACKING,BRAKE PLATE	1							
7	1	1N3503-25250	PLATE COMP.,BRAKE	1							
8	1	7N3503-25000	BRAKE SHOE ASSY.	1							
9	1	26016-060144	BOLT, M6X 14	3							

Fig.44. SIDE CLUTCH



(A)=FT51-7F
(B)=
(C)=

(D)=
(E)=
(F)=

No.	Lev.	Parts No.	Description	Q'ty						I	R
				(A)	(B)	(C)	(D)	(E)	(F)		
1	1	1N3521-26000	ROD,CLUTCH	1							
2	1	1N3521-26010	ROD (R), CLUTCH	1							
3	1	1N1350-25071	SHIFTER S,GEAR	2							
4	1	1N3542-26030	COLLAR	2							
5	1	1N3542-26040	KEY	2							
6	1	1N1350-24040	PIN 4X22,SPIROLL	2							
7	1	1N1350-25090	O-RING,CLUTCH ROD	2							

Parts No. Index

Parts No.	Fig. No.	Ref. No.
104200-59170	1	7
		18
	11	7
106990-44660		18
	7	21
	16	21
114250-13201	14	9
114250-45310	7	1
	16	1
114252-13800	5	15
114252-13900	14	14
	21	29
114252-13910	5	16
114252-13950	5	13
		19
114252-13960	5	17
114270-01600	1	5
	11	5
114270-59010	7	21 -1
	16	21 -1
114770-61600	9	5
	18	5
119520-03990	7	28
	16	28
129900-26250	1	9
		15
	11	9
		15
160110-02220	1	8
		14
	11	8
		14
160110-92610	3	7
	13	7
160110-92710	3	9
	13	9
160120-56670	8	3
	17	3
160120-76940	9	11
	18	11
160120-92700	3	8
	13	8
160210-56610	8	17
	17	17
160260-76620	10	16
	19	16
160310-14550	6	37
	15	37
160310-56980	8	12
	17	12

Parts No.	Fig. No.	Ref. No.
160310-56990	8	13
	17	13
160393-55050	7	11
	16	11
160495-77260	10	22
	19	22
160520-07370	3	6
160520-66291	9	23
	18	23
160593-57540	8	31 A
	17	31 A
160593-57750	8	6 -1
	17	6 -1
160610-01690	1	6
		17
	11	6
		17
160610-03050	2	1
	12	1
160610-55100	7	12
	16	12
160610-56630	8	9
	17	9
160610-56900	8	28
	17	28
160611-77250	10	21
	19	21
160640-56850	8	24
	17	24
160641-76570	10	17
	19	17
160664-07370	13	6
160664-66170	9	26
160664-66180	9	27
160664-66220	9	28
	18	25
160667-56750	8	25
	17	25
160670-66350	18	26
160690-04350	10	29 -2
	19	29 -2
160690-07260	3	5
	13	5
160690-11221	2	17
	12	17
160690-11222	2	17 -1
	12	17 -1
160690-11280	2	19
	12	19
160690-55140	7	23

Parts No.	Fig. No.	Ref. No.
160690-55140	16	23
160690-55462	7	22
	16	22
160690-56560	8	3 -1
	17	3 -1
160690-56570	8	4 -1
	17	4 -1
160690-56630	8	9 -1
	17	9 -1
160690-57800	8	31 B-1
	17	31 B-1
160690-61301	9	2
	18	2
160690-61311	9	3
	18	3
160690-61450	9	4
	18	4
160690-61600	9	6
	18	6
160690-66160	9	25
160690-66200	9	36
	18	33
160690-66210	9	37
	18	34
160690-78020	10	31
160690-78030	10	31 -1
160690-78230	10	27
	19	27
160691-56800	8	31 B
	17	31 B
160692-07251	3	4
160692-55330	7	14
	16	14
160692-56710	8	7
	17	7
160692-66051	18	14
160700-78040	10	32
	19	32
160700-78050	10	33
	19	33
160700-78720	10	34
	19	34
160702-56720	8	26
	17	26
160708-55150	7	13 -1
	16	13 -1
160710-55061	7	4
	16	4
160710-55360	7	17
	16	17

Parts No.	Fig. No.	Ref. No.
160710-55370	7	18
	16	18
160710-55382	7	19
	16	19
160710-78710	7	24
	16	24
160762-55150	7	13
	16	13
160763-12600	10	24
	19	24
160790-12510	5	3
	14	3
160790-12530	5	4
	14	4
160790-12531	5	4 -1
	14	4 -1
160790-12540	5	5
	14	5
160790-56550	8	19
	17	19
160790-56570	8	30
	17	30
160790-56571	8	30 -1
	17	30 -1
160790-56610	8	20
	17	20
160790-57700	8	20 -1
	17	20 -1
160791-78522	10	26
	19	26
160792-56570	8	22
	17	22
160792-57790	8	18 -1
	17	18 -1
160792-59361	7	29
	16	29
160793-78010	19	31
160798-07100	13	3
160810-01740	1	21
	11	21
160810-23201	6	32
	15	32
160810-56580	8	15
	17	15
160810-56590	8	16
	17	16
160820-03180	2	2
	12	2
160820-78710	7	25
	16	25

Parts No. Index

Parts No.	Fig. No.	Ref. No.
160880-56740	8	6
	17	6
160890-01210	2	3
	12	3
160890-01330	2	4
	12	4
160890-01331	2	4 -1
	12	4 -1
160890-04320	5	1
	14	1
160890-04330	2	5
	12	5
160890-07150	3	3
160890-11011	2	6
	12	6
160890-11012	2	6 -1
	12	6 -1
160890-11101	2	12
	12	12
160890-11111	2	13
	12	13
160890-11120	2	14
	12	14
160890-11190	2	15
	12	15
160890-11202	2	16
	12	16
160890-11270	2	18
	12	18
160890-11290	2	20
	12	20
160890-11300	2	22
	12	22
160890-11311	2	23
	12	23
160890-12500	5	2
	14	2
160890-12501	5	2 -1
	14	2 -1
160890-12520	5	6
	14	6
160890-12521	5	6 -1
	14	6 -1
160890-13210	5	9
	14	10
160890-13211	5	9 -1
	14	10 -1
160890-13520	14	11 B
		12
160890-13530	5	11

Parts No.	Fig. No.	Ref. No.
160890-13570	14	13
160890-13580	5	12
160890-13602	5	10
160890-13660	5	14
160890-13720	5	10 -1
160890-13721	5	10 -2
160890-13910	5	18
160890-14051	6	1
	15	1
160890-14052	6	1 -1
	15	1 -1
160890-14200	6	11
	15	11
160890-14400	6	12
	15	12
160890-14560	6	9
	15	9
160890-21200	6	16
	15	16
160890-21220	6	17
		33
	15	17
		33
160890-22011	6	22
	15	22
160890-22300	6	28
	15	28
160890-28010	6	34
	15	34
160890-45200	10	5
	19	5
160890-45210	10	2
160890-45240	10	2 -1
	19	2
160890-56040	8	1
	17	1
160890-56160	8	33
	17	33
160890-56430	8	18
	17	18
160890-56610	8	27
	17	27
160890-56620	8	10
	17	10
160890-56790	8	34
	17	34
160890-57020	8	1 -1
	17	1 -1
160890-57021	8	1 -2
	17	1 -2

Parts No.	Fig. No.	Ref. No.
160890-57600	8	22 -1
	17	22 -1
160890-57610	8	25 -1
	17	25 -1
160890-66010	9	12
	18	12
160890-66050	9	10
	18	10
160890-66081	9	14
160890-66101	9	13
160890-66110	9	19
	18	19
160890-66142	9	20
	18	20
160890-66190	9	33
	18	30
160890-66310	9	38
	18	35
160890-76050	10	7
	19	7
160890-76250	10	8
	19	8
160890-76510	10	9
	19	9
160890-76520	10	10
	19	10
160890-76530	10	11
	19	11
160890-76540	10	12
	19	12
160890-76550	10	13
	19	13
160890-76570	10	14
	19	14
160890-76580	10	15
	19	15
160890-76590	10	18
	19	18
160890-76600	10	17 A
	19	17 A
160890-78560	10	28
	19	28
160891-13030	14	11 -1
160891-13031	14	11 -2
160891-13501	14	11
160891-45121	10	1
	19	1
160891-45122	10	1 -1
	19	1 -1
160903-28020	1	10

Parts No.	Fig. No.	Ref. No.
160903-28020	1	16
	11	10
		16
160903-55390	7	20
160903-56670	8	4
	17	4
160910-56151	5	7
	8	32
	14	7
	17	32
160910-56550	8	21
	17	21
160920-59351	7	26
	16	26
160991-07260	13	4
160991-66111	18	13
160992-56520	8	2
	17	2
160992-56530	8	5
	17	5
160992-56550	8	11
	17	11
160998-04330	5	8 -1
	14	8 -1
160998-04340	5	1 -1
	14	1 -1
160998-13411	5	12 -1
160998-13412	5	12 -2
160998-13421	14	11 A
160998-13422	14	11 A-1
160998-55390	7	20 -1
	16	20
160998-56550	8	19 -1
	17	19 -1
160998-56600	8	14
	17	14
160998-56601	8	14 -1
	17	14 -1
160998-56602	8	14 -2
	17	14 -2
181230-56380	8	8
		29
	17	8
		29
1A2100-86500	4	1
1E1101-61040	32	4
1E1107-61250	32	7
1E1107-61260	31	43
1E1107-62000	28	31
1E1115-58300	31	13

Parts No. Index

Parts No.	Fig. No.	Ref. No.
1E5120-86600	4	3
1E5120-86720	4	2
1E6020-83890	21	24
1N1070-53000	20	8
1N1090-61030	32	2
1N1101-36050	24	12
		30
1N1101-44010	28	2
1N1101-44020	31	24
	35	2
1N1101-44040	31	50
1N1142-45080	28	35
1N1150-24170	37	21
1N1151-53000	20	20 -1
1N1185-22060	20	2
1N1185-53000	22	6
1N1185-53010	22	7
	31	49
1N1190-45000	20	20
	27	5
	34	23
	35	14
1N1210-16060	31	9
	33	14
	35	4
1N1211-47110	33	8 -1
1N1211-47180	28	11
1N1215-51000	31	29
	34	19
1N1240-35030	24	8
1N1286-47110	33	20
1N1291-22020	21	11
1N1291-22030	20	2 -1
		16
1N1291-25230	43	6
1N1291-58080	21	26
	22	3
		3 -1
	25	9
	26	3
	28	18
	31	21
1N1300-65240	35	5
1N1313-44000	34	17
1N1350-24040	44	6
1N1350-25010	41	5
1N1350-25071	44	3
1N1350-25090	44	7
1N1350-25111	42	2
1N1350-25120	42	3

Parts No.	Fig. No.	Ref. No.
1N1360-22090	20	9
1N1360-24030	37	5
1N1360-25001	41	4
1N1360-25010	37	4
1N1360-25022	41	3
1N1360-25031	41	1
1N1361-24010	37	7
1N1361-24020	37	8
1N1361-25040	42	8
1N1367-93100	36	6
1N1415-68300	24	25
1N1530-16040	21	17
1N1530-22060	21	18
1N1530-24300	20	32
1N1555-41350	28	23
1N1566-42170	29	6
1N1993-51040	28	39
1N1995-11000	21	28
1N1995-11001	21	28 -1
1N1995-11030	21	16
1N1995-11040	21	14 -1
1N1995-21000	21	1
1N1995-21010	31	6
1N1995-23000	30	29
1N1995-24000	37	1
1N1995-24010	37	2
1N1995-24020	37	3
1N1995-24030	37	24
1N1995-25000	30	7
1N1995-25010	30	13
1N1995-25030	30	4
1N1995-25040	30	9
1N1995-25050	30	3
1N1995-25060	38	1
1N1995-25070	38	3
	39	2
1N1995-25080	38	4
1N1995-25090	39	1
1N1995-25100	39	6
1N1995-25110	39	7
1N1995-25120	39	8
1N1995-25130	39	9
1N1995-25140	40	2
1N1995-25150	40	4
1N1995-25160	42	1
1N1995-26000	21	2 -2
1N1995-31000	22	1
1N1995-31001	22	1 -1
1N1995-31280	25	2
	33	15

Parts No.	Fig. No.	Ref. No.
1N1995-35010	23	14
1N1995-35030	23	15
1N1995-35040	23	7
1N1995-35060	23	16
1N1995-35070	24	35
1N1995-35080	23	18
1N1995-35090	24	37
1N1995-35100	24	38
1N1995-35110	24	39
1N1995-36000	24	26
1N1995-36020	24	24
1N1995-37000	23	8
1N1995-37020	23	19
1N1995-41000	28	27
1N1995-41010	28	9
1N1995-41020	28	17
1N1995-41040	26	7
1N1995-41050	28	30
1N1995-41070	29	2
1N1995-41080	29	1
1N1995-41150	28	36
1N1995-41170	28	7
1N1995-41190	28	1
1N1995-41200	28	10
1N1995-41210	26	2
1N1995-41240	26	1
1N1995-41270	29	9
1N1995-41320	20	15
1N1995-41321	20	15 -1
1N1995-41340	20	26
1N1995-41370	20	1
1N1995-41371	20	1 -1
1N1995-41390	20	13
1N1995-41420	20	24
1N1995-41440	29	4
1N1995-41450	20	28
1N1995-41460	20	2 -2
		16 -1
1N1995-42000	26	8
1N1995-42010	27	1
1N1995-44000	29	5
1N1995-45000	31	23
1N1995-45030	31	22
1N1995-45050	31	28
1N1995-45060	31	3
1N1995-45140	25	13
1N1995-45150	31	12
1N1995-45180	31	25
1N1995-45210	31	51
1N1995-47000	25	1

Parts No.	Fig. No.	Ref. No.
1N1995-47010	28	15
1N1995-47040	25	12
1N1995-47130	25	11
1N1995-47140	25	4
1N1995-47141	25	4 -1
1N1995-51000	28	39 -1
1N1995-51010	28	40 -1
1N1995-58000	30	27
1N1995-58010	22	8
1N1995-58020	22	10
1N1995-58021	22	10 -1
1N1995-58060	22	2
1N1995-58061	22	2 -1
1N1995-58070	25	7
1N1995-58080	25	8
1N1995-58090	30	26
1N1995-58110	30	30
1N1995-58130	27	6
1N1995-58150	31	47
1N1995-58160	31	48
1N1995-58170	21	25
1N1995-58171	21	25 -1
1N1995-58180	31	14
1N1995-58200	31	15
1N1995-58220	31	17
1N1995-58230	31	18
1N1995-58240	21	21
1N1995-58250	21	20
1N1995-58260	21	31
1N1995-58270	21	27
1N1995-58320	22	4
1N1995-58330	31	16
1N1995-58340	21	32
1N1995-58350	31	52
1N1995-58360	21	33
1N1995-58410	31	47 -1
1N1995-58420	22	11
1N1995-58430	21	34
1N1995-61000	32	1
1N1995-61040	32	3
1N1995-61050	31	41
1N1995-61060	30	12
1N1995-61070	30	19
	31	44
1N1995-61080	30	18
1N1995-61090	30	15
1N1995-61100	31	38
	32	5
1N1995-61110	31	39
1N1995-61120	30	14

Parts No. Index

Parts No.	Fig. No.	Ref. No.
1N1995-61130	31	45
1N1995-61140	30	8
1N1995-61150	31	46
1N1995-61160	30	20
1N1995-61170	32	8
1N1995-61180	30	17
1N1995-64000	34	1
1N1995-64120	34	12
1N1995-64220	34	15
1N1995-65000	34	2
1N1995-65010	34	3
1N1995-66000	34	6
1N1995-66040	34	8
1N1995-66080	34	10
1N1995-66090	34	13
1N1995-66100	34	14
1N1995-68000	33	12
1N1995-68060	23	17
1N1995-68070	33	19
1N1995-68160	33	2
1N1995-68180	33	3
1N1995-68200	33	1
1N1995-68260	32	14
1N1995-68290	33	13
1N1995-68320	35	12
1N1995-68321	35	12 -1
1N1995-68350	35	1
1N1995-68351	35	1 -1
1N1995-68380	35	8
1N1995-68381	35	8 -1
1N1995-68400	35	3
1N1995-68430	35	11
1N1995-68440	33	22
1N1995-68460	33	6
1N1995-68480	32	9
1N1995-68550	35	6
1N1995-68560	33	7
1N1995-68570	34	36
1N1995-68620	34	29
1N1995-68660	34	31
1N1995-93030	36	1 -1
1N1995-93050	36	17
1N1995-95101	36	23
1N3501-35030	24	32
1N3503-25230	43	4
1N3503-25250	43	7
1N3503-35070	23	2
1N3503-44000	34	33
1N3503-53000	27	4 -1
1N3503-53010	26	9

Parts No.	Fig. No.	Ref. No.
1N3503-53010	27	4
1N3503-53020	26	6
1N3503-64420	34	32
1N3503-66220	34	11
1N3503-93140	36	8
1N3503-93150	36	9
1N3503-93190	36	10
1N3505-25000	42	6
1N3505-93290	36	7
1N3505-93310	36	7 -1
1N3506-24000	30	2
1N3506-35020	23	6
1N3506-41100	28	28
1N3506-41180	28	29
1N3506-93210	36	1
1N3506-93260	36	2
1N3506-93320	36	4
1N3507-21030	21	7
1N3507-61080	30	21
1N3507-61150	30	16
1N3507-93160	36	5
1N3508-21000	21	3
1N3508-24010	21	10
1N3510-61190	28	8
1N3512-61020	32	6
1N3512-61040	31	40
1N3513-42160	34	21
1N3513-45100	28	32
1N3513-45250	28	34
1N3513-58230	34	7
1N3513-61100	20	6
1N3514-42520	28	22
1N3516-21020	21	5
1N3516-41720	21	6
1N3516-45210	31	42
1N3521-25020	40	1
1N3521-25040	40	3
1N3521-25080	43	1
1N3521-25110	41	2
1N3521-26000	44	1
1N3521-26010	44	2
1N3542-26030	44	4
1N3542-26040	44	5
1N3542-36040	24	3
1N3542-93060	36	18
1N3542-93070	36	19
1N3542-93080	36	20
		20 -1
1N3544-61020	32	11
1N3544-93310	36	12

Parts No.	Fig. No.	Ref. No.
1N3544-93320	36	13
1N3544-93330	36	14
1N3544-93340	36	15
1N3544-93350	36	16
1N3544-93360	36	11
1N3545-24020	37	6
1N3545-36010	24	4
1N3545-45210	34	22
1N3545-45240	34	16
1N3545-51030	34	18
1N3561-36000	24	22
1N3561-51070	28	40
1N3563-93020	36	21
1N3563-93050	36	22
22137-060000	9	29
	29	7
	31	36
	34	20
22137-080000	20	11
	21	12
	26	10
	27	2
	28	25
	30	24
	35	9
	37	10
22137-100000	33	17
	37	15
22137-120000	20	30
	24	19
	28	41
22137-160000	6	21
	15	21
	24	9
		27
		40
	28	12
	33	8
22137-180000	32	12
22217-050000	31	32
22217-060000	28	21
	39	11
	43	3
22217-080000	21	15
	37	11
22217-100000	20	4
	24	34
	28	5
	31	10
	37	16

Parts No.	Fig. No.	Ref. No.
22217-120000	20	4 -1
		18
	24	20
	28	42
	37	22
22217-160000	23	13
	24	10
		28
		41
	33	10
22242-000120	26	5
	29	3
22242-000140	43	5
22242-000150	20	29
	38	5
22242-000180	20	7
22242-000200	24	6
	33	5
22242-000220	41	7
22242-000250	23	5
22242-000300	42	7
22252-000190	6	29
	15	29
22252-000550	42	5
22351-040008	6	36
	15	36
22351-050025	28	37
22360-100000	33	23
22360-180000	32	10
22417-250200	26	11
	27	3
	29	8
	31	30
	35	10
22417-400400	32	13
22512-040160	6	18
	15	18
22512-040300	6	19
	15	19
22512-050160	6	3 A
		10
	15	3 A
		10
22512-070380	6	38
	15	38
22550-050100	41	6
22550-050150	31	8
22550-050250	21	4
22550-050251	39	5
24101-060024	39	3

Parts No. Index

Parts No.	Fig. No.	Ref. No.
24101-060034	38	2
	40	5
24101-060044	24	5
	41	8
24101-060054	23	3
24101-060064	42	4
24104-060044	33	4
24311-000180	1	23
	11	23
24421-153007	39	4
24421-173007	40	6
24421-204212	24	7
24421-354707	23	4
24761-010000	20	31
24761-060000	24	13
		23
		31
	33	16
	34	37
	35	15
25123-003201	21	2
25123-003401	21	2 -1
25123-005401	31	7
26016-060144	43	9
26018-060164	20	25
	21	9
		22
		22 -1
	30	28
	31	19
26018-080164	20	14
	21	19
26018-080204	20	27
	21	30
	22	9
	25	5
	27	7
	28	33
	29	10
	30	10
	31	2
26018-100252	34	9
26018-100254	23	9
	31	4
	32	15
	33	24
	34	30
	35	13
26051-060002	20	23
	21	8

Parts No.	Fig. No.	Ref. No.
26051-060002	25	16
	30	5
	31	37
	34	28
26051-080002	20	12
	21	13
	28	26
	30	25
	34	35
26051-100002	20	5
	24	33
	25	3
	33	18
	35	7
26106-060082	10	19
	14	11 C
		15
	19	19
26106-060102	7	27
	16	27
26106-060122	10	20
	19	20
26106-060162	9	39
	18	36
26106-060352	2	24
	12	24
26106-080142	14	16
26106-080202	6	39
	15	39
26106-080302	1	20
	11	20
26116-060352	31	35
26116-080452	21	14
26116-081302	30	22
26116-100402	34	24
26117-040088	9	18
	18	18
26117-040257	9	24
	18	24
26117-050204	31	31
26117-060304	25	14
26117-060354	20	21
	34	26
26117-080204	34	34
26117-080304	28	24
26117-080352	37	13
26117-080452	30	23
26117-080602	37	9
26117-081102	37	18
26117-100164	31	11

Parts No.	Fig. No.	Ref. No.
26117-100254	34	4
	37	19
26117-100354	37	20
26117-100702	24	36
	28	3
26117-100804	31	26
26117-101202	37	14
26117-161504	23	11
26347-060002	9	30
	18	27
26347-100002	31	27
	34	25
26366-060002	9	34
	18	31
26366-080002	5	8
		20
	10	23
	14	8
		17
	19	23
26367-060002	20	22
	21	23
	22	5
	25	10
	26	4
	28	19
	30	6
	31	20
26367-080002	25	6
	29	11
	30	11
26367-100002	23	10
	31	5
	33	21
26476-060142	9	32
	10	3
		4
		6
	18	29
	19	3
		4
		6
26476-060252	10	29
	19	29
26476-060302	10	29 -1
	19	29 -1
26557-060162	28	20
	39	10
26557-060452	43	2
26657-160002	28	14

Parts No.	Fig. No.	Ref. No.
26717-050002	31	33
26717-080002	37	12
26717-100002	20	3
	28	4
	37	17
26717-120002	20	3 -1
		17
	24	21
	37	23
26717-160002	24	42
	28	13
	33	9
26737-160002	6	20
	15	20
26756-060002	9	31 -1
	18	28 -1
26757-060002	9	31
	18	28
	25	15
	34	27
26757-080002	20	10
26757-100002	28	6
	34	5
26757-120002	20	5 -1
		19
	28	16
26757-160002	23	12
	24	11
		29
	33	11
26979-060082	28	38
28110-100120	3	10
	13	10
29610-000650	10	30
	19	30
29610-000950	10	35
	19	35
720380-11570	2	20 A
	12	20 A
760792-01502	1	11
	11	11
760890-01561	1	1
	11	1
760890-21700	6	13
	15	13
760890-22500	6	24
	15	24
760890-23700	6	30
	15	30
760890-55730	7	2

Parts No. Index

Parts No.	Fig. No.	Ref. No.
760890-55730	16	2
7N1995-24000	30	1
7N1995-61000	31	1
7N1995-61010	31	34
7N3503-25000	43	8
7N3542-35000	23	1
7N3542-36000	24	2
7N3542-36010	24	1
7N3560-36001	24	14

Parts No.	Fig. No.	Ref. No.
-----------	----------	----------

Parts No.	Fig. No.	Ref. No.
-----------	----------	----------

Parts No.	Fig. No.	Ref. No.
-----------	----------	----------